



Antique & Fine Art Sale, 16th Apr, 2024 - 17th Apr, 2024

- 1 **A George III mahogany and boxwood lined longcase clock**, the enamelled dial with Arabic numerals, subsidiary seconds dial and date dial, the arch decorated with a red squirrel nibbling a nut, the spandrels decorated with blue flowers on a pink ground, the twin train four pillar movement striking on a bell, contained within a rectangular hood with dentil frieze and fluted column detail, the trunk door inlaid with a circular floral motif, flanked by fluted columns on a rectangular base with shaped bracket feet, pendulum and weights present, 205cm high.
£100-200
- 2 **A late 18th / early 19th century oak longcase clock, Smoult & Gilbertson, Newcastle**, the 11" square brass dial with Arabic numeral chapter ring, the twin train four pillar movement striking on a bell, enclosed within a hood with spiral carved columns, the case carved all-over with stylised dragons, fruit, acorns and foliage raised on bracket feet, weights and pendulum present, 203cm high.
£100-200
- 3 **A late 18th / early 19th century mahogany and boxwood lined longcase clock**, the enamelled dial with Roman numerals, subsidiary seconds and date dials, the arch decorated with the Norse Sea Goddess, the spandrels decorated with corn sheaves and flowers, the twin train four pillar movement striking on a bell contained within a plain hood with broken scroll pediment, trunk with rectangular door on a rectangular base, pendulum, weights and key present, 208cm high.
£100-200
- 4 **A late 19th / early 20th century mahogany station wall clock, H & R Millar, Edinburgh**, the 14" enamel dial with Roman numerals and subsidiary seconds dial, the trunk door with glazed panel, pendulum, keys and weight present, 150cm long.
£400-600
- 5 **A George III mahogany longcase clock, RICHARD HOWARD, LONDON**, the brass dial and chapter ring with Arabic and Roman numerals with subsidiary seconds dial and date aperture, the arch with 'strike/ silent' dial, the twin train five pillar movement striking on a bell, within a dome topped hood supported by fluted columns with brass collars, the arched trunk door above a rectangular base raised on four rectangular feet, pendulum and weights present, 236cm high.
£400-600
- 6 **A reproduction walnut George III style bachelors chest**, the rectangular top with moulded edge above a brush slide and four long graduated cockbeaded drawers, raised on bracket feet, 66cm wide x 72.5cm high x 38cm deep.
£70-150
- 7 **A 19th century mahogany notice board**, with moulded cornice and single glazed door opening to a velvet lined interior, 103cm wide x 89cm high x 7.5cm deep.
£50-100
- 8 **A 19th century oak tabletop specimen cabinet**, the rounded rectangular top with a moulded edge over a pair of panelled cupboard doors opening to a fitted interior with eight long graduated drawers, the upper drawer bearing a brass plaque for 'Daniel & Arter, Birmingham', the sides with two pairs of brass drop carry handles (one handle missing), 53cm wide x 61cm high x 45cm deep.
£100-200
- 9 **A 19th century walnut specimen cabinet**, the later detachable rectangular top over a pair of panelled cupboard doors opening to a fitted interior with nineteen shallow drawers, each centred with a turned brass knob, raised on ceramic castors, 52.5cm wide x 69cm high x 45cm deep.
£100-200
- 10 **A 19th century pine specimen chest of nineteen graduated drawers**, each with two turned knobs, 64cm wide x 120cm high x 56.5cm deep.
£150-300
- 11 **A 19th century Anglo-Indian coromandel sofa**, the upright back centred with a shell carved motif flanked by stylised floral bosses and pierced scrolling foliage, set with two later floral upholstered panels, the scroll-over arms fronted with stylised flower bosses, each with a later floral upholstered panel, the corresponding upholstered seat raised on four foliate scroll carved supports, 229.5cm long x 97cm high x 70cm deep.
£800-1,200
- 12 **A late 19th / early 20th century French kingwood and gilt metal mounted occasional table**, the circular top with radiating veneers above a plain shaped apron raised on four tapered cabriole supports with foliate cast sabots, 69.5cm diameter x 72.5cm high.
£200-400



Antique & Fine Art Sale, 16th Apr, 2024 - 17th Apr, 2024

- 13 **A Chinese dark wood side table/ dressing table, early 20th century**, the rectangular panelled top above a frieze set with two small drawers flanked by two deeper drawers, raised on four rectangular section supports united by a pierced fretwork under-tier, 121cm wide x 82.5cm high x 66cm deep.
£800-1,200
- 14 **A pair of early 20th century George III style elbow chairs**, the shaped top rail above a carved and pierced interlaced splat over brown leather upholstered seats with brass studded detail, flanked by foliate carved open arms, raised on foliate carved cabriole supports with claw and ball feet, 105cm high.
£100-200
- 15 **A Chinese dark wood urn stand, late 19th/ early 20th century**, the octagonal-shaped top centred with a mottled red and white marble insert above a pierced and foliate carved frieze, raised on four foliate carved cabriole supports united by an X-shaped stretcher, 28cm diameter x 91cm high.
£100-200
- 15A **A 19th century mahogany waterfall bookcase**, with four open shelves over three small drawers, raised on four splayed bracket feet, 86cm wide x 105cm high x 26cm deep.
£150-300
- 15B **A 19th century oak console table**, the upright back centred with oval cartouche, with shield shaped apron and scroll carved front supports with paw shaped feet, 135cm wide x 117cm high x 52cm deep.
£150-300
- 15C **A 19th century satinwood and yew wood tea table**, the hinged demi-line top raised on four scroll carved supports with floral boss detail, on a concave platform base with four downswept supports terminating in brass cups and castors, 96.5cm wide x 75cm high x 47.5cm deep.
£150-300
- 16 **An 18th century Dutch mahogany jardiniere stand, in the Louis XVI style**, of circular form with detachable brass liner and brass swing handle, the sides with circular drop carry handles, the front fitted with a small frieze drawer raised on four tapered cylindrical supports with fluted detail, resting on brass ball feet, 27cm diameter x 46cm high.
£100-200
- 17 **An 18th century Dutch mahogany and marquetry inlaid hanging cabinet**, the moulded cornice above an astragal glazed cupboard door opening to a fitted interior with three shelves flanked by astragal glazed side panels, 111.5cm wide x 83cm high x 26.5cm deep.
£150-300
- 18 **A set of eight late 19th century Dutch elm dining chairs**, the rectangular top rails supported by four wheat sheath carved vertical splats over serpentine upholstered seats, raised on tapered square supports with channelled line detail.
£400-600
- 19 **A pair of George III mahogany rectangular stools**, the upholstered seats raised on four baluster turned supports, 37cm wide x 40cm high x 30cm deep.
£200-400
- 20 **A Regency rosewood snap-top supper table, in the manner of Gillows**, the hinged circular top with a foliate carved edge raised on a baluster turned column with acanthus carved collar, resting on a circular plinth with three foliate carved downswept supports terminating in paw feet resting on brass castors, 122cm diameter x 73.5cm high.
£800-1,200
- 21 **Two Edwardian mahogany chairs**, one a horseshoe back armchair with vertical spindle gallery, floral upholstered seat on tapered cylindrical supports with boxwood line detail; the other a corner chair with floral upholstered seat on four tapered cylindrical supports.
£70-150
- 22 **A Chinese ebonised urn stand, early 20th century**, the dished circular top raised on four archaic style carved supports united by an X-shaped stretcher, 39cm diameter x 43cm high.
£50-100
- 23 **A Chinese hardwood scroll table, late 19th/ early 20th century**, the rectangular panel top above a pierced and carved scroll and ball frieze, raised on rectangular section trestle end supports, 175.5cm wide x 106cm high x 41cm deep.
£800-1,200
- 24 **A 19th century Italian Sorrento inlaid centre table**, the circular top inlaid with a geometric radiating design, raised on a tapered, turned column with three shaped downswept supports, 91cm diameter x 77cm high.
£200-400



Antique & Fine Art Sale, 16th Apr, 2024 - 17th Apr, 2024

- 25 **A George III mahogany elbow chair**, the shaped top rail above a rectangular back with central vertical spar with Prince of Wales feather carved detail, flanked by two tapered vertical spars, the upholstered seat flanked by open arms resting on reeded and acanthus carved posts, raised on tapered square section supports with spade feet, 88.5cm high.
£100-200
- 26 **A Chinese dark wood urn stand of asymmetric form**, with three various open shelves, pierced dragon, cloud scroll, fretwork and bat carved details, raised on square section supports with scroll carved feet, united by an H-shaped stretcher, 77cm wide x 71.5cm high x 30cm deep.
£100-200
- 27 **An early 18th century oak lambing chair**, the rectangular panelled back flanked by shaped lugs over a detachable woven string seat panel, with later striped cushion, flanked by slightly bowed arms over a panelled front connecting to the back legs by stretchers, 109cm high.
£150-300
- 28 **An 18th century oak lambing chair**, the shaped top rail above a rectangular panelled back, the box base with pull-out sliding seat, with later striped cushion, flanked by slightly concave arms, 112cm high.
£150-300
- 29 **A George III oak joynt stool**, the rectangular top with moulded edge above a shaped frieze raised on four baluster turned supports united by stretchers, 45cm wide x 55.5cm high x 31cm deep.
£200-400
- 30 **A Regency kingwood and satinwood banded drop-leaf side table**, the rectangular top with twin drop-leaves over a blind frieze drawer and deep drawer with faux double drawer front, raised on tapered bobbin turned supports with brass cups and castors, 88.5cm wide (open) x 76cm high x 46cm deep.
£200-400
- 31 **An 18th century French, Breton, cherrywood free-standing bow fronted corner cabinet**, the shaped top with moulded edge over a triple panel cupboard door, carved with jug issuing flowers, oval medallion enclosing a fish and stylised plant issuing from a bowl, opening to a fitted interior with two shelves, raised on shaped feet with inverted scroll detail, 65cm wide x 152cm high x 40cm deep.
£150-300
- 32 **An early 19th century walnut and brass inlaid child's elbow chair**, the rectangular top rail with brass inlaid detail above a horizontal splat set with three balls, the upholstered seat flanked by reeded arms resting on baluster turned columns, raised on tapered square section supports, 70cm high.
£100-200
- 33 **A Chinese dark wood occasional table, Qing Dynasty**, the circular top centred with a mottled red and white marble insert, within a border of flowers, foliage and butterflies, the frieze carved and pierced with animals and foliage, raised on a dragon and bamboo carved column with three downswept dragon-form supports, 56cm diameter x 81cm high.
£800-1,200
- 34 **A Chinese dark wood urn stand, Qing Dynasty**, the pentagonal-shaped top centred with a round marble insert, above a frieze pierced and carved with Shou characters and flowering prunus blossom, raised on five cabriole supports united by a floral carved boss, 27.5cm diameter x 67cm high.
£200-300
- 35 **A Chinese dark wood Kang table, late 19th/ early 20th century**, the rectangular panel top above a pierced scroll frieze raised on four square section supports with inverted scroll carved detail, 76cm wide x 26.5cm high x 41cm deep.
£200-300
- 36 **A Chinese dark wood and marble high-backed bench, late 19th/ early 20th century**, the upright back centred with three white and grey veined marble panels within a pierced and carved surround of faux bamboo, flowers, fruit, foliage and animals, above a rectangular panelled seat flanked by inverted scroll arms, raised on faux bamboo carved supports, 166cm wide x 124cm high x 53.5cm deep.
£200-400



Antique & Fine Art Sale, 16th Apr, 2024 - 17th Apr, 2024

- 37 **A late 19th century mahogany hall table in the Renaissance Revival style**, with baluster column supports, part spiral-fluted legs and architectural pediments, with narrow frieze drawer, 79cm wide x 75cm high x 44.5cm deep.
£100-200
- 38 **A 19th century mahogany reclining library armchair**, the later upholstered back, arms and seat raised on gadrooned carved baluster supports with brass cups and castors, the front rail pulling out to reveal a footrest, resting on a baluster turned support and brass castors (one front leg detached).
£150-300
- 39 **A George II walnut bureau**, the rectangular fall-front opening and resting on loppers, to a fitted interior with small drawers, pigeonholes and recessed well, over two short and two long graduated drawers raised on bracket feet, 92cm wide x 99cm high x 54cm deep.
£200-400
- 40 **A late 18th century Dutch oak bombe bureau**, the serpentine fall-front opening to a fitted interior with central tambour shutter, pigeonholes and recessed well, over two small drawers with drop ring handles and three long drawers over a shaped apron carved with urn issuing foliage, raised on paw carved feet, 95.5cm wide x 111cm high x 50cm deep. Ivory Act 2018 (2022) compliant with non-transferable APHA registration, reference CNTVNJW5.
£150-300
- 41 **A late 18th century Dutch oak bombe chest**, the shaped rectangular top above three long drawers and a shaped apron with ribbon tied motif, raised on claw and inverted scroll feet, 91cm wide x 83.5cm high x 51cm deep.
£250-500
- 42 **A 19th century carved walnut hall chair**, the upright back with foliate and scroll carved surmount above a pierced scrolling interlaced section and upholstered panel back, the upholstered seat raised on foliate carved cabriole supports united by shaped stretchers, resting on brass castors, 119cm high.
£150-300
- 43 **A pair of early 20th century painted satinwood octagonal-shaped occasional tables**, the tops painted with sprays of flowers and rosehips, raised on tapered octagonal columns, and three downswept supports with painted harebell details, 33.5cm diameter x 75.5cm high.
£250-500
- 44 **A mid-20th century French style green and white painted double bed frame**, the headboard with central button-down upholstered panel below a foliate carved surmount flanked by curved side panels set with button-down upholstered panels, the footboard of corresponding decoration, 145cm wide x 151cm high x 183cm long.
£250-500
- 45 **A pair of Chinese dark wood square occasional tables, late Qing Dynasty**, the square panelled tops above a frieze carved and pierced with scrolls, fruit and foliage, raised on four square section supports with inverted scroll feet, 47.5cm square x 51cm high.
£600-900
- 46 **A 19th century walnut, marquetry and gilt metal mounted credenza**, the shaped top above a plain frieze and central panelled cupboard door, opening to a later fitted interior, flanked by serpentine glazed cupboard doors opening to velvet lined interiors with two shelves, raised on a plinth base, 153cm wide x 104cm high x 39cm deep.
£400-600
- 47 **A pair of George III style mahogany elbow chairs, 20th century**, the flower and scroll carved top rails above a pierced splat with flower and scroll carved detail, the green velvet upholstered seats flanked by scroll carved arms raised on cabriole supports with claw and ball feet, 104cm high.
£200-300
- 48 **A Chinese dark wood urn stand, Qing Dynasty**, the rectangular panel top above a pierced scroll carved frieze, raised on four square section supports with inverted scroll carved feet, united by a rectangular panelled under-tier, 40.5cm diameter x 80cm high x 30cm deep.
£200-300



Antique & Fine Art Sale, 16th Apr, 2024 - 17th Apr, 2024

- 49 **A pair of 19th century ebonised Boulle pier cabinets**, the rectangular tops above plain frieze decorated with scrolling foliage over a glazed cupboard, opening to velvet lined interiors with a single shelf, the sides with shell and scroll gilt metal mounts, raised on shaped plinths centred with a gilt metal mount, 80.5cm wide x 110cm high x 30cm deep.
£400-600
- 50 **A 19th century mahogany pedestal desk**, the rectangular top with green leather skiver with gilt tooled detail, above a central frieze drawer flanked by two small drawers raised on two pedestals each fitted with three graduated drawers, 157.5cm long x 76.5cm high x 79cm deep.
£500-800
- 51 **A pair of late 19th century rosewood, marquetry and gilt metal mounted card tables**, the hinged revolving tops of serpentine outline inlaid with flowers and scrolling foliage, opening to green baize-lined interiors, the frieze inlaid with flowers and foliage, raised on four cabriole supports with scroll and foliate cast mounts, 82cm wide x 79cm high x 42cm deep.
£1,000-1,500
- 52 **A modern Victorian style two-seat sofa**, with loose cushion back and seat, raised on tapered turned cylindrical supports with brass cups and castors, 200cm wide.
£150-300
- 53 **A pair of late 19th / early 20th century giltwood fauteuil**, the frames with scroll and shell carved detail with upholstered backs and seat, raised on tapered cabriole supports, 82cm high.
£200-400
- 54 **An Edwardian satinwood display cabinet**, the moulded cornice above a single astragal glazed cupboard door opening to a cloth lined fitted interior with two shelves, flanked by glazed side panels, raised on four tapered square supports with spade feet, united by shaped under-tier, 130.5cm wide x 169cm high x 36.5cm deep.
£200-400
- 55 **A Regency style mahogany and coromandel centre table**, the rounded rectangular top above two frieze drawers backed by two false drawers, raised on lyre carved ends with four concave downswept supports terminating in claw feet resting on brass castors, 150cm wide x 73.5cm high x 68cm deep.
Ivory Act 2018 (2022) compliant with non-transferable APHA registration, reference E4KEDEMP.
£250-500
- 56 **A 19th century walnut, marquetry and gilt metal mounted demi-lune console table**, the inlaid top decorated with fan shaped inlay and floral garlands within a repeating border of flower heads and scrolling foliage, the frieze centred with a portrait medallion and inlaid with ribbon tied foliate swags, raised on four tapered square supports with shaped gilt metal feet, 123cm wide x 89.5cm high x 63.5cm deep.
£400-600
- 57 **A rare early 18th century Welsh oak wainscot elbow chair, circa 1700**, the triple panel rectangular back above a planked seat with slightly shaped gallery edge, flanked by a pair of bowed arms with shaped knuckles resting on turned and block supports united by stretchers, 110cm high.
£200-300
- 58 **A pair of 18th century Dutch mahogany and marquetry inlaid corner tables**, the tops inlaid with urns issuing flowers and fronted with a pierced brass gallery over a pierced frieze raised on three tapered square section supports with floral boss detail, 53cm wide x 76.5cm high x 34cm deep.
£250-500
- 59 **An Edwardian satinwood, ebony lined and brass mounted two-tier étagère**, the rectangular top with applied brass edge, raised on four rectangular section supports united by a corresponding under-tier, resting on slightly shaped legs with brass cups and castors, 36.5cm wide x 58.5cm high x 31cm deep.
£400-600
- 60 **A George III mahogany snap-top occasional table**, the shaped circular top with an egg and dart carved border, resting on a gun barrel turned column with three downswept supports, terminating in foliate carved feet, 71cm diameter x 70cm high.
£250-500



Antique & Fine Art Sale, 16th Apr, 2024 - 17th Apr, 2024

- 61 **A George II red walnut kneehole desk**, the rectangular top with moulded edge above two cockbeaded frieze drawers and two rows of three deep cockbeaded drawers flanking a kneehole recess with arched cupboard door, raised on six bracket feet, 86cm wide x 79cm high x 49cm deep.
£500-800
- 62 **A Chinese dark wood square occasional table, late Qing Dynasty**, the square panelled top above a frieze carved in shallow relief with scroll motifs, raised on four square section supports with inverted scroll detail at the feet, 44.5cm square x 52cm high.
£200-300
- 63 **A Chinese dark wood quartetto of occasional tables, late 19th/ early 20th century**, each of rectangular form carved with faux bamboo details, the largest 50.5cm wide x 72cm high x 36cm deep.
£300-500
- 64 **A late 19th century French mahogany and gilt metal mounted display cabinet**, the moulded cornice above a serpentine glazed cupboard door opening to a fitted interior with two glass shelves, flanked by serpentine glazed side panels, on a base with single cupboard door decorated with Vernis Martin type decoration of male and female figures, opening to a fitted interior with single shelf raised on four cabriole supports with foliate cast mounts, 68cm wide x 178cm high x 36cm deep.
£800-1,200
- 65 **A 19th century Continental walnut, ebonised, tortoiseshell and gilt metal mounted table cabinet on associated table stand**, the table cabinet with a pierced brass fretwork gallery above a central cupboard door decorated with an arched recess housing a classical warrior holding a spear, flanked by turned columns, opening to a fitted interior with five drawers, flanked by four drawers on each side, raised on six turned bun feet, the sides with wrought iron drop carry handles, the table with a rectangular top, pierced brass fretwork on the edge, raised on shaped lyre ends supported by a wrought iron stretcher with scroll details; the table cabinet 123cm wide x 88cm high x 41cm deep; the table 146cm wide x 84.5cm high x 54cm deep.
£2,000-3,000
- 66 **A Chinese dark wood display cabinet, late 19th/ early 20th century**, the upper section with bamboo, fruit and foliate carved surmount above a glazed cupboard door opening to a fitted interior with two shelves, resting on a base with pierced and foliate carved bamboo frieze, raised on four tapered cabriole supports united by two square open shelves and a rectangular under-tier, 70cm wide x 194cm high x 35.5cm deep.
£800-1,200
- 67 **A Dutch Empire mahogany tray-top side table**, the rectangular top with raised gallery edge above a blind frieze drawer raised on lyre carved trestle ends with spindle details united by an under-tier and raised on four arched square section supports united by a turned stretcher, 49cm wide x 70.5cm high x 32.5cm deep.
£250-500
- 68 **A George III mahogany snap-top occasional table**, the hinged circular top with pie-crust edge, raised on a spiral carved baluster column and three downswept supports with foliate carved knees terminating in claw and ball feet, 77cm diameter x 74cm high.
£250-500
- 69 **A George III red walnut games table**, the hinged rectangular top opening to a baize lined interior with four dished receptacles, resting on hinged gate-leg action over a single frieze drawer, raised on four scroll cabriole supports, terminating in hoof-shaped feet, 81cm wide x 72.5cm high x 41cm deep.
£300-500
- 70 **A George II red walnut silver table**, the dished rounded rectangular top above a blind frieze drawer raised on four lappet carved tapered cylindrical supports with pad feet, 77cm wide x 68.5cm high x 50cm deep.
£300-500
- 71 **A 19th century French mahogany console table**, the mottled white and grey rectangular marble top above a blind frieze drawer raised on foliate and scroll carved supports, with mirrored back and shaped platform base raised on four tapered square supports, 123cm wide x 96.5cm high x 51cm deep.
£400-600



Antique & Fine Art Sale, 16th Apr, 2024 - 17th Apr, 2024

- 72 **A pair of Chinese dark wood barrel-shaped stools, early 20th century**, the circular panelled tops with simulated riveted detail, raised on five vertical supports with pierced oval detail united by a circular stretcher, raised on five bracket feet, 32.54cm diameter x 54.5cm high.
£400-600
- 73 **A Victorian walnut armchair in the manner of Howard & Sons**, with button-down upholstered back, arms and seat, raised on tapered turned supports with brass cups and brown ceramic castors.
£250-500
- 73A **A George III mahogany chest**, fitted with two short over three long graduated cockbeaded drawers, raised on bun feet, 100cm wide x 83cm high x 54cm deep.
£70-150
- 73B **A George III oak coffer**, the triple panel hinged cover over a triple panel front carved with three stylised flowers, raised on rectangular section supports, 121cm wide x 60cm high x 53cm deep.
£150-300
- 73C **A late 19th century oak pedestal desk**, the rectangular top with a moulded edge over a central frieze drawer and two small drawers, raised on three drawer pedestals, each with plinth base, 126cm wide x 79.5cm high x 81cm deep.
£150-300
- 73D **A Louis XV style kingwood, marquetry and gilt metal mounted commode, early 20th century**, with mottled red and white marble top over three drawers, raised on four splayed legs, 75cm wide x 84cm high x 35.5cm deep.
£150-300
- 74 **A Chinese dark wood and marble bench, late 19th/ early 20th century**, the upright back centred with a mottled orange and white circular marble panel, within a pierced and carved border of fruit and foliage, flanked by two mottled white rectangular marble panels with corresponding borders, the panelled rectangular seat flanked by pierced and foliate carved arms, raised on four cabriole supports, 160cm wide x 106cm high x 54cm deep.
£500-700
- 75 **A nest of three George III style satinwood and rosewood banded occasional tables**, the rectangular tops raised on four tapered cylindrical supports resting on trestle ends, each united by a curved back stretcher, 48cm wide x 72.5cm high x 26.5cm deep.
£400-600
- 76 **A 19th century mahogany cellarette**, the hinged domed top opening to a fitted interior with twelve divisions, raised on four square chamfered supports, resting on brass castors, 51.5cm wide x 76.5cm high x 39cm deep.
£250-500
- 77 **A Chinese dark wood bench, late 19th/ early 20th century**, the rectangular back carved and pierced with a central oval panel of two figures seated at a table, flanked by two smaller fan-shaped panels carved and pierced with Kylin and birds on a ground carved and pierced with two dragons contesting a flaming pearl, above a row of eleven turned spindles, the panelled rectangular seat flanked by dragon carved arms, the apron carved and pierced with flowers and fruit, raised on four square section supports terminating in claw and ball feet, 158cm wide x 109cm high x 56cm deep.
£800-1,200
- 78 **A Chinese dark wood centre table, late Qing Dynasty**, the rectangular top with two mottled red square-shaped marble inserts, above a scroll carved frieze and pierced apron, raised on four square section supports with claw feet, 92cm wide x 78.5cm high x 48.5cm deep.
£600-900
- 79 **A pair of 19th century Regency style rosewood sofa tables**, the rounded rectangular tops with twin drop leaves above two frieze drawers on each side, raised on four baluster turned supports resting on a concave platform base with four downswept supports terminating in acanthus cast brass mounts resting on castors, 153.5cm wide (open) x 73.5cm high x 81.5cm deep.
£3,000-5,000
- 79A **A late George III style mahogany serpentine commode**, the shaped rectangular top above three long graduated cockbeaded drawers, with shaped apron centred with a quatrefoil motif, raised on four short foliate carved cabriole supports, 136cm wide x 82cm high x 64cm deep.
£200-400



Antique & Fine Art Sale, 16th Apr, 2024 - 17th Apr, 2024

- 79B **A late 19th / early 20th century Indian carved wood and brass inlaid occasional table**, the rectangular top carved with a circular floral boss in a carved border of birds and scrolling foliage, on a folding base with eight mihrab shaped panels, 60cm wide x 60cm high x 59cm deep.
£100-200
- 79C **A late 19th / early 20th century Military leather two-handled shell case / stick stand**, impressed 'R.C.D', with later metal liner, 75cm high.
£50-100
- 79D **A late 19th century stick stand**, the square top with a foliate carved edge over double panel sides carved with flowers and foliage, 34cm square x 69.5cm high.
£70-150
- 79E **A Chinese dark wood and mother-of-pearl inlaid urn / jardiniere stand, Qing Dynasty**, the oval top with mottled red and white marble insert above a frieze carved and pierced with flowers and fruit, raised on four slightly concave supports with claw and ball feet, 44cm wide x 52cm high x 35cm deep.
£150-300
- 80 **A late 19th/ early 20th century French kingwood, marquetry and gilt metal mounted escrioire**, the mottled red and white marble top above a hinged fall-front opening to a fitted interior with one long and two short drawers, over a green velvet-lined writing surface, over three long drawers, raised on splayed supports with gilt metal mounts, 73cm wide x 130.5cm high x 38cm deep.
£600-900
- 81 **A 19th century quartetto of mahogany, ebony and brass lined occasional tables**, the rectangular tops with brass line inlay and slightly raised ebony line gallery, raised on four tapered ring-turned cylindrical supports resting on trestle ends, each united by a curved back stretcher, 51cm wide x 76.5cm high x 35cm deep.
£800-1,200
- 82 **A late 19th century Chinese dark wood open display cabinet**, with carved and pierced surmount of two dragons contesting a flaming pearl, above five open shelves carved and pierced with prunus blossom fretwork above a pair of panelled cupboard doors carved in shallow relief with rock work and flowering branches, raised on four claw and ball feet, 105cm wide x 207cm high x 39.5cm deep.
£2,000-3,000
- 83 **A pair of late 19th century satinwood, porcelain and gilt metal mounted display cabinets**, the upper sections each with a glazed cupboard door opening to mirror-backed interiors fitted with two velvet lined shelves, on bases fitted with single panelled cupboard doors, each centred with a blue ground oval porcelain panel depicting court figures within ribbon-tied gilt metal mounts, raised on shaped plinth bases, 79cm wide x 194cm high x 39cm deep
£4,000-6,000
- 84 **An 18th century oak wainscot elbow chair**, the shaped top rail carved with two demi-lune stylised floral bosses above a rectangular panel back carved with stylised flower head motifs, the planked seat flanked by open arms raised on square chamfered supports united by stretchers, 103cm high.
£200-300
- 85 **A George III satinwood and marquetry inlaid side table**, the oval top centred with coloured shell inlay above a single frieze drawer, raised on four tapered square section supports with ebony line detail, terminating in brass cups and castors, 58.5cm wide x 73cm high x 40cm deep.
£300-500
- 86 **A George III mahogany and boxwood lined dome top cellarette**, the hinged cover opening to a fitted interior with twelve square divisions, over a pair of cupboard doors below, the sides with brass drop carry handles, raised on four brass castors, 53cm wide x 73.5cm high x 44cm deep.
£400-600
- 87 **A George III mahogany kettle stand**, the octagonal shaped top with pierced gallery and pull-out slide, raised on a baluster turned column with three foliate carved downswept supports with inverted scroll feet, 29.5cm diameter x 68.5cm high.
£400-600
- 88 **A 19th century Regency style mahogany waterfall bookcase**, fitted with three graduated open shelves over a pair of cupboard doors with metal wire grills backed with burgundy coloured fabric, raised on four baluster turned supports, 59.5cm wide x 134cm high x 26.5cm deep.
£400-600



Antique & Fine Art Sale, 16th Apr, 2024 - 17th Apr, 2024

- 89 **A mid-18th century French Provincial cherrywood bombe commode**, the rectangular top with serpentine front edge above two deep drawers with applied gilt metal mounts and drop handles, raised on four shaped square section supports with scroll carved detail, 120cm wide x 86cm high x 61.5cm deep.
£400-600
- 90 **A Chinese dark wood and hardstone decorated scroll table, late 19th/ early 20th century**, the panelled rectangular top above a frieze carved with archaic mask motifs on a diaper ground, set with panels of carved green hardstone lotus flowers and scrolls, raised on four cabriole supports with mask carved details, terminating in claw and ball feet, 160cm wide x 90cm high x 63cm deep.
£2,000-3,000
- 91 **A Regency style giltwood convex wall mirror**, with ball-set frieze, two scroll surmounts and gadrooned apron, 61cm diameter.
£100-200
- 92 **A 19th century carved giltwood over mantel mirror**, the frame carved with scrolls, flowers and foliage, with pierced scroll carved surmount, 146cm wide x 184cm high.
£500-800
- 93 **A Moroccan rug, 20th century**, the rectangular field centred with a red ground octagonal shaped medallion flanked by two blue ground octagonal shaped medallions within multiple borders of stylised foliate motifs, 160cm x 83cm.
£50-100
- 94 **A small Persian rug/ mat, 20th century**, the madder ground centred with an ochre-coloured medallion within a burnt orange border of stylised flowers and foliage, 49cm x 126cm.
£50-100
- 95 **A Persian rug, Ghoochan**, the rectangular madder field decorated with two rows of six octagonal shaped gulls, centred with stylised floral motifs within an ivory-coloured border of stylised flower heads, 208cm x 115cm.
£100-200
- 96 **A Turkish rug, 20th century**, the rectangular madder ground centred with a large ivory-coloured foliate medallion, within an ivory ground border of stylised flowers, 118cm x 206cm.
£100-200
- 97 **A Kelim rug, 20th century**, the rectangular blue ground centred with a row of three lozenge shaped medallions within a white ground border of stylised foliate motifs, 106cm x 222cm.
£100-200
- 98 **An Afghan Kazak rug, 20th century**, the rectangular madder ground centred with a large blue ground lozenge enclosing flowers within an ivory ground border of stylised flowers, 154cm x 213cm.
£100-200
- 99 **An Indian silk rug, 20th century**, the rectangular ground decorated with nine mihrab shaped panels each enclosing stylised flowers and foliage, within a panelled border of corresponding motifs, 127cm x 193cm.
£150-300
- 100 **A Turkish Rah Rah runner, 20th century**, the rectangular field decorated with horizontal rows of stylised foliate motifs within a madder ground border of stylised flowers, 78cm x 280cm.
£150-300
- 101 **A Turkish rug, 20th century**, the rectangular madder ground centred with a blue ground lozenge enclosing an ivory ground hexagonal medallion within an ochre ground border of stylised flowers, 109cm x 174cm.
£150-300
- 102 **A Turkish long rug, 20th century**, the rectangular abraded madder ground centred with a large oval medallion enclosing stylised flowers, enclosed by blue ground spandrels, within a burnt earth ground border decorated with colourful flowers, 120cm x 250cm.
£200-300
- 103 **A Persian long rug, 20th century**, the rectangular madder ground centred with a large lozenge shaped medallion enclosing stylised foliate motifs within an ivory-coloured border of stylised flowers, 163cm x 333cm.
£250-500
- 104 **A north-west Persian long rug, 20th century**, the rectangular field centred with a row of six lozenge shaped medallions worked in blue and madder coloured threads on an ivory-coloured ground surrounded by corresponding lozenge shaped medallions on a burnt earth ground, within an ivory ground border of stylised scrolling flower heads, 398cm x 113cm.
£250-500



Antique & Fine Art Sale, 16th Apr, 2024 - 17th Apr, 2024

- 105 **An Eastern Turkish Maras Gigim flat-weave long rug, early 20th century**, worked all-over with a geometric lozenge pattern in off-white madder, ochre, orange and blue, 422cm x 150cm.
£400-600
- 106 **A Persian Mashad carpet, 20th century**, the rectangular magenta ground centred with a blue lozenge shaped medallion worked all-over with flowers and serrated foliage within a dark blue ground border of repeating floral palmettes, 408cm x 301cm.
£400-600
- 107 **A Persian Tabriz carpet, 20th century**, the rectangular madder field centred with a blue ground lozenge enclosing flowers and foliage, with ivory ground spandrels enclosed by a blue ground border of repeating floral palmettes, 351cm x 254cm.
£500-800
- 108 **A Persian Isfahan carpet, 20th century**, the rectangular blue ground field decorated with all-over design of flowers and scrolling within a corresponding blue ground border, 399cm x 264cm.
£600-800
- 109 **A stone bird bath / planter**, of triangular form with dished centre, approximately 65cm wide x 26cm high.
£50-100
- 110 **A pair of Architectural stone ball finials**, approximately 35cm diameter.
£200-400
- 111 **A 1952-1977 H.M. Queen Elizabeth II Silver Jubilee Crown**, together with two Churchill Crowns, and remaining coinage (qty).
£20-50
- 112 **A white metal cased compensated pocket barometer, R & P Beck, London & Philadelphia, No.1104**, case diameter 36.2mm, in original leather covered case; together with a chrome plated Smiths stopwatch, 50.7mm diameter (2).
£20-50
- 113 **A collection of assorted vintage glass marbles.**
£30-70
- 114 **A late 19th century oval shaped horn snuff box and cover**, the detachable cover centred with a white metal shield, 6.7cm wide, together with a silver plated agate snuff box with hinged cover, 3.3cm square (2).
£40-80
- 115 **A late 19th century brass and clear glass paraffin burning oil lamp**, 38cm high.
£40-80
- 116 **A late 19th century brass oil burning paraffin lamp**, with ruby glass shade, 42.5cm high.
£50-100
- 117 **An early 19th century Dutch, Friesland, foot warmer**, of rectangular form with top carved and pierced with interlocking circular design above an open front with rise and fall sliding detachable panel centred with a brass knob, the top with hinged brass carry handle, 22.5cm wide x 20cm high x 20cm deep.
£50-100
- 117A **A late 18th / early 19th century French oak apprentice-made commode**, the rectangular top with moulded edge above three long chip-carved drawers, enclosed by fluted uprights with chip-carved details, raised on tapered rectangular section supports terminating in spade feet, 40.5cm wide x 37.5cm high x 16.5cm deep.
£100-200
- 118 **An 18th century Battersea enamel oval patch box**, the hinged oval cover inscribed 'A Trifle from Newport, Isle of Wight' around a vignette of Carisbrooke Castle, opening to a white enamel interior with a pale blue enamel exterior, 4.2cm wide.
£50-100
- 119 **An 18th century Battersea enamel oval patch box**, the hinged cover inscribed 'A Trifle from Portsmouth', opening to a white enamel interior with a pale blue enamel exterior, 4.4cm wide.
£50-100
- 120 **An 18th century Battersea enamel patch box**, the hinged rectangular cover decorated with scene of lovers, opening to white enamel interior, the exterior decorated with scattered foliate sprays, 5.6cm wide.
£50-100
- 121 **An 18th century Battersea enamel circular salt cellar**, decorated with scattered foliate sprays raised on three shell shaped supports, 6.5cm diameter x 3.2cm high.
£50-100
- 122 **A late 18th/ early 19th century white metal mounted mother-of-pearl snuff box**, of rectangular form with canted angles, formed from Chinese mother-of-pearl gaming counters, 6.7cm wide x 2.6cm high x 4.5cm deep.
£50-100



Antique & Fine Art Sale, 16th Apr, 2024 - 17th Apr, 2024

- 123 **A Victorian needlework sampler by Louisa Hannah Brooks dated 1853**, worked in red and blue coloured threads with alphabet and numbers, 25cm x 32.5cm, framed and glazed 31cm x 38cm.
£50-100
- 123A **A collection of eleven lace work items, 18th century and later**, to include collars, cuffs and doilies, mounted, framed and glazed overall 64cm x 71.5cm.
£100-200
- 123B **A 19th century red and green ground Paisley shawl**, worked in blue, red and green coloured threads, fringed, 312cm x 157cm.
£100-200
- 123C **A 19th century black ground paisley shawl**, worked in red, blue and green coloured threads, fringed, 170cm x 165cm.
£50-100
- 124 **An Arts & Crafts painting on leather**, decorated with a Japanese lady, 59cm x 25cm.
£50-100
- 125 **A cast iron plaque for Hand in Hand Insurance (1696-1905) policy 80585**, with red and gilt painted details, 21.5cm x 20cm.
£50-100
- 126 **A large silvered witches ball**, approximately 22.5cm diameter.
£50-100
- 127 **Attributed to Alexander Ritchie, an Arts & Crafts pentagonal shaped tray**, 25cm diameter.
£50-100
- 128 **A Neolithic polished stone hand axe**, 11.5cm long.
£50-100
- 128A **A coral specimen**, approximately 31cm diameter x 19cm high.
£50-100
- 129 **An early 20th century silver-plated white seal skin sporrán**, the cantle decorated with circular motifs, with three tassels and chain belt, 24.5cm x 18cm.
£70-150
- 130 **A late 19th century silver plated and gilt metal camel epergne**, centred with a wheel-cut glass flower vase and two similar smaller vases, supported by three camels on a circular platform base with three shell shaped feet, stamped marks 'HW&Co', 45.5cm high.
£70-150
- 131 **A pair of Ailsa Craig granite curling stones with brass handles.**
£70-150
- 132 **A pair of Crieff Blackstone curling stones with silvered coloured handles.**
£70-150
- 133 **A pair of late 19th / early 20th century French gilt metal and white marble three light candelabra**, in the Neo-Classical taste, 21.5cm high.
£70-150
- 134 **Wilhelm Schiller & Sons, a Renaissance style pottery charger with bronzed finish**, mounted within spiral carved wooden frame, impressed marks, 48.5cm diameter.
£70-150
- 135 **An Art Deco figurine, of actress and singer Violet Marquesita as 'LUCY LOCKIT' in The Beggar's Opera, Lyric Hammersmith, 1920**, in defiant stance with arms folded, wearing a golden ball gown, carrying an orange reticule with matching beads and gloves, made in plaster coated with a fine layer of wax and coloured, by Agatha Walker, signed with monogram 'AW' and dated 1921, 24cm high.
£80-120
- 136 **A 19th century gilt metal seal wheel**, set with six coloured hardstone seals each with intaglio carved seal, 5cm long, together with a gilt metal seal stamp, the matrix bearing the initial 'M', 7cm long, (2).
£80-120
- 136A **A George III red leather sarcophagus shaped casket**, the hinged cover centred with a plaque inscribed 'Eliz. A Murray from her Sister Charlotte Oswald, 1812', the sides with lion mask terminals and drop ring handles, raised on four brass ball shaped feet, 16cm wide x 7.5cm high x 11cm deep.
£80-120
- 137 **A Victorian dried flower montage**, depicting a basket of flowers with crab and shell detail, inscribed "Uphill, Weston-Super Mare 1863", in box frame, overall size 40cm x 47cm.
£80-120
- 138 **A Victorian dried flower and shell montage**, depicting a basket issuing flowers formed from shells and foliage, in box frame, overall 32cm x 37.5cm.
£80-120



Antique & Fine Art Sale, 16th Apr, 2024 - 17th Apr, 2024

- 139 **A pair of 19th century French gilt metal mounted Toleware ewers**, decorated with foliate sprays on a green ground, 31cm high.
£80-120
- 140 **A reproduction mahogany table-top spiral staircase display stand, Bevan Funnell**, 62cm high x 45cm diameter.
£100-200
- 141 **ARR Gillian Falconer, A group of five pieces of mid-20th century modernist sculpture**, comprising four free-standing forms, the tallest 41cm high, and a shallow bowl, 34.5cm wide (5).
£100-200
- 142 **A 19th century miniature violin**, in fitted mahogany case, the violin 33cm long.
£100-200
- 143 **A Māori wood Patu**, carved with stylised figure and mask to the butt of the handle with mother-of-pearl inlaid details, 34cm long.
£100-200
- 144 **A 1788 pattern cavalry trooper's sword**, with single edged blade, blade length 72cm, overall length 87.5cm.
£100-200
- 145 **Antiquities - A collection of Ancient Roman pottery, glass and other fragments**, comprising; pottery fragment inscribed on paper label 'Pompeii 1888', painted pottery fragment inscribed on paper label 'MYCENE', pottery fragment inscribed on paper label 'ELEUSIS', iridescent green glass fragment inscribed on paper label 'Nicomedia Sea of Marmara' together with remaining items (qty).
Provenance: James Ewing Somerville (1843-1923) who had a second home in Menton, South of France, and would visit Ventimiglia in Northern Italy to attend "Roman Sales" in the period 1880-1900.
£100-200
- 146 **Antiquities - A Roman Samian ware pottery cup**, decorated with a band of stylised foliage, 5.5cm diameter x 3.5cm high.
Provenance: James Ewing Somerville (1843-1923) who had a second home in Menton, South of France, and would visit Ventimiglia in Northern Italy to attend "Roman Sales" in the period 1880-1900.
£100-200
- 147 **Antiquities - An Ancient Egyptian stone funeral peg**, of tapered cylindrical form, the top carved with an oval panel enclosing hieroglyphs, 20cm long.
Provenance: James Ewing Somerville (1843-1923) who had a second home in Menton, South of France, and would visit Ventimiglia in Northern Italy to attend "Roman Sales" in the period 1880-1900, he also visited Egypt and Palestine in 1866.
£100-200
- 148 **A late 18th century/ early 19th century white metal mounted abalone shell snuff box**, the hinged cover centred with an oval shell shaped insert within an engraved border of flowers and C-scrolls, the main body with white metal mount forming a single flower, 6.7cm wide.
£100-200
- 149 **An 18th century blue ground Battersea enamel snuff box**, the hinged cover opening to a white enamel interior, the exterior decorated with a colourful panel of flowers on the cover, the sides with white enamel foliate sprays, 5cm wide; together with a late 18th/ early 19th century gilt metal and enamel box, the hinged enamel cover with serpentine front edge, decorated with a ribbon tied foliate spray and two butterflies, 7.5cm wide (2).
£100-200
- 150 **A Fijian carved wood kava bowl formed as a Turtle**, 41cm long x 12cm high.
£100-200
- 151 **A scarce and rare edition of The Dundee Weekly Advertiser, Vol.I, Friday January 16 1801.**
£100-200
- 152 **A Regency rosewood and marquetry inlaid tea caddy**, the hinged cover inlaid with initials 'GMF' to underside, opening to a fitted interior with two removable rectangular tea caddies and a central recess with later glass mixing bowl, raised on four brass ball feet, 30cm wide x 17cm high x 15cm deep.
£100-200
- 153 **A late 19th / early 20th century French marble and bronze mounted three-piece desk stand**, comprising a pen tray centred with a classical bronze bust of a maiden flanked by two inkwells, raised on four brass feet, 48cm wide, together with a blotter, 17.5cm wide, and a letter rack, 18cm wide.
£100-200



Antique & Fine Art Sale, 16th Apr, 2024 - 17th Apr, 2024

- 154 **After Pierre Puget (1620-1694), a plaster figure of Le Faune**, impressed marks, 54cm high.
£100-200
- 155 **A pair of gilt metal mounted blue pottery table lamps**, formally oil burning paraffin lamps, 39cm high.
£100-200
- 156 **A late 19th century Swedish spalted birch and marquetry inlaid dressing table mirror**, the rectangular mirror plate with a chequer line border and scroll surmount topped with a bird on a branch, supported by two scroll uprights on a serpentine base fitted with a single drawer, raised on brass feet, 39cm wide x 57cm high.
£100-200
- 157 **A large Arts & Crafts Newlin School patinated copper charger**, of shaped circular form, richly embossed with entwined poppies on a hammered ground around a central stylised fish, 75cm diameter.
£100-200
- 158 **An 18th century Battersea enamel scent bottle case**, the fluted body decorated with flowers and foliage with hinged cover, 6cm high x 3cm wide.
£100-200
- 159 **Negretti & Zambra, London, an oak cased barograph**, No.R/11542, 33.5cm wide x 16.5cm high x 19cm deep.
£100-200
- 160 **A George III mahogany cheese coaster**, 41.5cm wide x 15cm high x 26cm deep.
£100-200
- 161 **A bronzed spelter figure of a cobbler**, 17cm wide x 18cm high.
£100-200
- 162 **An 18th century Dutch lacquered pewter coffee pot and stand**, the coffee pot with detachable cover and oval vignette depicting a country house with figures fishing before a bridge, raised on three scroll supports and ball feet, resting on a brass and copper base with pierced fret-work gallery raised on three turned wooden ball feet, 47cm high.
£100-200
- 163 **A late 18th / early 19th century French carved coquilla nut scent bottle**, carved on both sides with urns issuing flowers, serpents and stylised foliage, 6.5cm long.
Ivory Act 2018 (2022) compliant with non-transferable APHA registration, reference 88MGAM7S.
£100-200
- 164 **Two 19th century carved coquilla nut two-part needle cases**, one carved with stylised flowers and foliate swags, 9.9cm long, the other carved with flowers, foliage and two rectangular panels enclosing portrait profiles, 10.3cm long (2).
£100-200
- 165 **A George III oak spoon rack**, the fret-cut upright back with two horizontal spoon receptacles above a hinged rectangular base flanked by fret-cut sides, 43cm wide x 60cm high.
£120-180
- 166 **A group of four Mauchline Ware / treen snuff boxes**, to include a rare black lacquered rectangular snuff box with gilded scroll decoration to the cover, the underside of the cover with indistinct stamp marks, 7.8cm long; an oval white metal mounted snuff box, the cover set with a white metal armorial panel, the base section with white metal collar inscribed 'WILLm.Graham, Glasgow', the underside of the cover with stamped marks, 9.5cm wide; a rectangular snuff box decorated with vignette 'Dinshaw Maneckjee Petit Esq', 8.5cm wide; and a small rectangular snuff box decorated with vignette on the cover 'Don't you wish you may get it', 5cm wide (4).
£100-200
- 167 **A collection of six Mauchline Ware bound books**, to include 'Souvenir of Land O' Burns' 17cm; 'Falls at the Hermitage, Cowper's Poetical Works' 19cm; a fern ware bound volume of 'Longfellow's Poetical Works' 17cm; Stirling Castle Volume of 'The Lady of the Lake' 14.5cm; floral bouquet decorated volume 'The Temperance Birthday Book' 11cm and 'I think of thee, think thou of me today' notebook 10cm (6).
£100-200



Antique & Fine Art Sale, 16th Apr, 2024 - 17th Apr, 2024

- 168 **A collection of Mauchline Ware**, to include a cylindrical powder box and cover decorated with 'Leamington Lower Parade', 4cm high; a puzzle box decorated with 'Burns Cottage', 7.5cm wide; a pair of glove stretchers decorated with 'Burns Monument, Kilmarnock', 18.5cm long; a page marker decorated with 'The Cross Bambury' to one side, and 'Wesleyan Chapel, Bambury' to the other, 12.2cm long; a whistle decorated with 'Burns Cottage', 7.5cm long; a rolling pin / desk ruler decorated with 'The Royal Crescent, Bath' and 'The Abbey Church, Bath', 18cm long; a small needle case in the form of a book decorated with 'Stirling Castle', 5.7cm; a shaped oval brooch decorated with 'Doune Castle', 5.7cm; a circular brooch decorated with 'Alloway Kirk', 3.5cm; a small book 'Gods Greetings in Nature' decorated with oval vignette of a cityscape; a notebook decorated with silhouette of children; a circular compass box decorated with coastal view; a fern ware letter opener, 22cm long; and a pair of flower decorated circular boxes and covers, 3.5cm diameter (15).
£150-300
- 169 **A collection of Mauchline Ware**, to include a Pullman Parlour Car decorated with floral vignette 'Should auld acquaintance be forgot'; thread box for Clark & Co, Anchor sewing cottons; a cylindrical box and cover decorated with floral vignette 'Friendship, What is your fortune my pretty maid' for Clark & Co Hand & Machine sewing; a rectangular box with floral vignette; a rectangular thread box with floral vignette 'Dearest may every joy' for Clark & Co; an 1889 page turner 'The United Asbestos Co' and an 1887 page turner 'Eastern Telegraph Company' (6).
£150-300
- 170 **A collection of Mauchline Ware**, to include four napkin rings, two decorated with 'Glasgow Green' and 'Suspension Bridge', one 'Glasgow from the Clyde', the other 'George Sq, Glasgow' together with a larger napkin ring 'Union Street Ryde'; a tripod cauldron decorated with 'Burns Cottage, Alloway'; two egg cups, one decorated with 'Burns Cottage', the other 'Alloway Kirk'; a cylindrical box and cover 'Balloch Myle Creamery, Mauchline, Seafoam for best Cakes'; a beaker cup 'Burns Mont. Kilmarnock'; a cased glass cup 'International Exhibition Glasgow'; a cased glass cup 'Tomnahurich'; a cased glass cup 'Largs from North'; and a cased glass scent bottle and stopper 'Made of wood from Stirling Castle and bought in the Douglas Room' (14).
£150-300
- 171 **A collection of Tartan Ware**, to include Prince Charlie page turner; MacDuff thimble holder and thimble; Rob Roy Loch Katrine needle case and cover; Prince Charlie Inveraray decorated ring box; Prince Charlie decorated needle case; Caledonia notebook and pencil; McPherson Superior Court Plaister rectangular sleeve; Albert snuff box by Smith of Mauchline; Caledonia pin cushion decorated with Melrose Abbey; McPherson Clark & Co Extra Quality thread box and cover; Prince Charlie circular box and cover decorated with figure and pedestal; together with an unnamed notebook; an unnamed scoreboard marker; unnamed egg-timer and two unnamed napkin rings, together with one volume 'Tartan Ware, Souvenirs from Scotland' (17).
£200-400
- 172 **A collection of eighteen assorted Mauchline Ware boxes**, to include 'Perth from the Edinburgh Road' 11.5cm; 'Burns Monument' 11cm; 'Silver Strand, Loch Katrine' 11cm; 'The Glen House' 11cm; 'Linlithgow Palace' 10cm; 'At Banchory' 8.5cm; 'Bolton Abbey from Hartington Seat' 8.5cm; 'Bo'ness, Windermere' 8.5cm; 'Linlithgow Palace from West' 6cm; 'Edinburgh from Carlton Hill' 9.5cm; 'Doune Castle from river' 6cm; 'Grand Pas De Deux, Merry Christmas and a Happy New Year' 11cm; 'The Origin of Cumbrae' 8cm; a bird decorated box, signed 'G M Yardley' 10.5cm; 'Auld Brig O'Doune' 19cm; 'The Town Hall, Cardiff' 25cm; a box decorated with chinoiserie scene of teapot, vase and dish, 13cm wide and pokerwork rectangular box, 23cm wide (18).
£200-400



Antique & Fine Art Sale, 16th Apr, 2024 - 17th Apr, 2024

- 173 **A collection of Mauchline Ware**, to include a cigar case 'Edinburgh Castle from Princes street' 13cm; a wall mounted two-tier stationary rack decorated with 'Dunvegan Castle, Skye' and 'Portree, Skye' 21cm; an oval dish 'Cromer, Norfolk' 10.5cm; a rounded rectangular box decorated with 'Borrowdale' 16cm; a gavel decorated with 'Home of Washington' 31cm; a money box 'South Street, Elie' 10cm; a house form money box 'The Ancient Entrance Gate, Stirling Castle' 9cm; a barrel shaped money box 'Largs from Pier' 8cm; another barrel shaped money box decorated with figure on horseback and scattered foliate spray, 7.5cm; a pocket watch stand decorated with 'Kilearn' 10cm high; a circular bowl 'The Lawn, Dawlish' 8cm; Jockeys cap and horseshoe inkwell 'Inverkeithing' 10.5cm; coal scuttle storage box 'Tighnabraich, Kyles of Bute' 8cm; a cradle 'Bo'ness' 11.5cm; a pocket watch stand 'Ravensraig Castle, Kirkcaldy' 9cm high; a box in the form of a Creepie stool decorated with 'Shotley Bridge' 10.5cm; a steel printing plate decorated with six landscape views, and two books, both titled 'Mauchline Ware' by John Baker (19).
£200-400
- 174 **A collection of Mauchline Ware sewing related items**, to include a needle case 'Cabourg, La Plage'; a pin cushion in the form of an umbrella 'Stirling Castle from back walk'; a cylindrical needle case and cover 'Black Gang Shine Isle of Wight'; another cylindrical needle case and cover 'Regalia of Scotland'; a ball shaped string holder 'Granville Marina & Etablissement, Ramsgate'; a pin cushion in the form of a tripod stool 'The Big Tree, North Inch Perth'; a pin cushion in the form of a lugie pale 'Abbotsford'; a shamrock shaped pin cushion 'Part of an Elm knot for fir which grew on Huntley Burn on the lands of Abbotsford'; a double ended pin cushion 'The Cliff walks on Westgate on Sea'; a cylindrical needle case and cover 'Scott Monument Edinburgh'; a cylindrical pin cushion 'International Exhibition Edinburgh 1886'; another cylindrical pin cushion 'Burns Cottage, Alloway'; a pin cushion two drawer chest 'Stobs Castle' and 'Cavers House'; a darning mushroom 'Tam o' Shanter & Souter Johnny'; a thimble case 'Herne Church'; a needle case with willow patterned covers; a pin cushion 'Sedilia, Burness Abbey'; a flower decorated egg shaped thimble holder and a William Paton Johnstone Mill cylindrical Paton's Twine box and cover (19).
£200-400
- 175 **A late 19th / early 20th century Black Forest carved wooden model of a bear**, with painted details and inlaid eyes, 26cm long x 17cm high.
£200-300
- 176 **A rare 18th century Battersea enamel 'Spaniel' patch box**, the hinged oval cover inscribed 'when virtuous love birds us obey, how happy is the bridal day' around an oval vignette of a country house opening to a mirrored underside, the base formed as a recumbent spaniel in basket, 4.2cm wide x 3cm deep.
£200-400
- 177 **Daw, 30 Cheapside, a Regency red leather and gilt metal bound sarcophagus shaped ladies writing / work box**, the hinged cover opening to a fitted interior with open recesses and covered compartments, the sides with brass drop carry handles, the pull-out drawer opening to a reveal a velvet lined writing slide, two white metal mounted ink bottles, raised on four paw shaped feet, 31cm wide x 21cm high x 26cm deep.
£200-300



Antique & Fine Art Sale, 16th Apr, 2024 - 17th Apr, 2024

- 178 **A good quality 20th century brass and cut glass four-light chandelier**, 65cm high (excluding chain suspension) x 53cm diameter.
£200-400
- 178A **A Modern twelve light silvered metal and cut glass chandelier**, approximately 75cm wide x 60cm high.
£100-200
- 179 **A late 19th/ early 20th century brass four-light hanging chandelier**, set with four foliate cast branches each suspending a light, mounted to a pierced circular graduated frame with lion mask and drapery swag detail, approximately 89cm high x 77cm.
£250-500
- 180 **A 17th / 18th century Scottish dirk**, the single edged blade and carved wood handle decorated with entwined knot-work and incised love heart detail, overall 42cm long, blade 31.8cm long.
£250-500
- 181 **An early 20th century cold-painted bronze model of a stag**, with fourteen point antlers, 31cm high x 25cm wide.
£250-500
- 182 **Antiquities - An antique white marble bust, possibly Roman, thought to be Octavian (Augustus Caesar)**, mounted on mottled black and green marble socle, 21cm high.
Provenance: James Ewing Somerville (1843-1923) who had a second home in Menton, South of France, and would visit Ventimiglia in Northern Italy to attend "Roman Sales" in the period 1880-1900.
£250-500
- 183 **A pair of late 19th century Grand Tour bronze and sienna marble tazza**, 30cm high x 23cm wide.
£400-600
- 183A **A pair of French bronze classical urns, after the Antique**, based on the Townley vase, cast in relief with Bacchanalian processions of figures, on tapering black marble plinth bases with bronze feet, 38cm high (2).
£600-800
- 184 **A pair of French bronze models of Cupid and a young girl, probably Psyche, in the manner of Louis-Simon Boizot**, mounted on mottled yellow and white marble circular plinths, 31.5cm high.
£600-900
- 185 **A late 19th century silver carriage clock**, the white enamel dial with Roman numerals, in richly embossed foliate case with folding carrying handle, on four stud feet, by Mappin & Webb, London, 1896, 9cm high overall.
£100-200
- 186 **A late 19th century marble and gilt metal mounted clock garniture**, the clock with circular enamel dial bearing Arabic numerals and floral garland, the twin train movement striking on a bell, the case with ribbon tied floral garlands and urn shaped surmount, 44.5cm high x 28cm wide; together with a pair of matching urns ensuite, 35cm high.
£200-400
- 187 **A late 19th century French marble and gilt metal mounted clock garniture**, the clock with circular Arabic numeral dial and twin train movement striking on a bell, signed 'F. Thibaudin', with urn and swag surmount, together with a pair of four light candelabra ensuite, the clock 43cm high x 18.5cm wide; the candelabra 32cm high x 11cm wide.
£400-600
- 188 **An early 19th century French bronze and gilt metal mantle clock**, the circular dial with Roman numerals and twin train movement striking on a bell, inscribed 'Rinemon-A-Toulouse', with applied swan, laurel wreath and floral garland detail with oval urn surmount, raised on foliate cast feet, 39cm high x 18cm wide.
£200-400
- 189 **A French Charles X rosewood and brass inlaid Portico clock**, the engine turned silvered dial with Roman numerals, the twin train movement striking on a bell, contained within an architectural case, with brass inlaid details, raised on a rectangular plinth and four flattened circular bun feet, 51cm high x 26.5cm wide x 15cm deep.
£200-400
- 190 **A Regency mahogany and gilt metal mounted bracket clock**, Westwood, Princess Street, Leicester Square, London, the 8" circular dial with Roman numerals and the twin train movement striking on a bell within an architectural case with brass drop ring carry handles and pierced grill sound frets at the side, raised on four brass ball feet, 53.5cm high x 31cm wide x 18cm deep.
£400-600



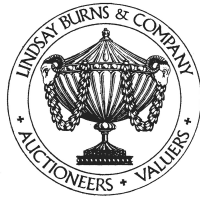
Antique & Fine Art Sale, 16th Apr, 2024 - 17th Apr, 2024

- 191 **A Regency mahogany Strawberry Hill Gothic bracket clock, George Allen, Red Lion Passage, London**, the enamel dial with Roman numerals and three train movement striking on nine bells, within architectural case, the sides with gilt metal sound frets, raised on four bun feet, 55cm high x 31cm wide x 20cm deep.
£800-1,200
- 192 **A small leather cylindrical snuff box in the form of a travelling trunk**, with leather integral hinge and residual hair to the surface, late 18th century, 6cm wide.
£30-50
- 193 **A small tortoiseshell rounded oblong snuff box with incurved sides**, the hinged cover inset with a pewter basket of flowers, early 19th century, 4.7cm wide.
£30-50
- 194 **A Scottish horn boat-shaped snuff box**, the three-quarter hinged cover deeply carved with initials 'EH', with brass hinge and brass pins, inscribed inside the base 'I. Renaut', early 19th century, 10cm long.
£30-50
- 195 **A horn oblong snuff box**, the integral hinged cover with silvered-metal scroll inlay around oval initial plaque, mid-19th century, 10cm wide.
£30-50
- 196 **A brass cut-cornered oblong snuff box**, the hinged cover engraving with a wine ewer, goblet and floral sprays around an applied silver miniature pen knife, stamped maker's mark 'W How' over 'W Hampton' for Wolverhampton inside lid, mid-19th century, 6.5cm wide.
£30-50
- 197 **A blonde horn oval snuff box with pull-off cover**, incised 'NEWTON' in cursive script and dated '1790', late 18th century, 8.5cm wide.
£30-50
- 198 **A horn oblong snuff box with incurved sides and integral hinged cover inlaid with a treen and bone star motif**, within a corded copper circle, mid-19th century, 8.2cm wide.
£30-50
- 199 **A black lacquer papier-mâché oblong Advertising snuff box with reeded sides and radiating base**, the hinged cover painted in gilt 'PRINCE ROYAL SNUFF' with coronet above, 19th century, 5cm high.
£30-50
- 200 **A Mauchline ware circular string box**, the detachable cover depicting Inverness Castle within borders of thistles and foliate motifs, inscribed 'INVERNESS, THE CASTLE', the sides with a band of classical figures on horseback, 19th century, 8cm diameter.
£40-60
- 201 **A black lacquer papier-mâché circular snuff box**, the detachable cover with two male figures in a market square inscribed 'New way to pay old debts', the base with lines from the play of the same name by Philip Massinger, early 19th century, 9.5cm diameter.
£30-50
- 202 **A Scottish treen oblong snuff box**, the integral hinged cover inscribed 'MADE OF WOOD FROM THE FOUNDATIONS OF AULD BRIG O' AYR, Built 1252', with foil lining, 19th century, 6cm wide.
£30-50
- 203 **A Mauchline ware curved oblong snuff box**, decorated overall with green, red and blue stripes alternating with bands of gilt classical ornament, stamped maker's mark 'SMITH, MAUCHLINE, MANUFACTURERS TO HIS MAJESTY' and Royal Warrant inside lid and base, early 19th century, 9cm wide.
£30-50
- 204 **A Mauchline ware oblong snuff box**, the integral hinged cover decorated in penwork with a monkey teasing a dog, inscribed 'Don't you wish you may get it', 7.5cm wide; and a black lacquer papier-mâché circular snuff box, the detachable cover with two seated figures, inscribed 'The Ghost Story', 8.5cm diameter, both early 19th century (2).
£30-50
- 205 **A leather circular snuff box with folded overlapping lid formed as a flower**, with impressed simple stamped floral motifs to the side and a painted figural illustration to the base, with tin interior, late 18th century, 8cm diameter.
£40-60
- 206 **A black lacquer papier-mâché oblong snuff box**, the hinged cover painted with a rural scene with four figures, child, donkey and dog with a church beyond in tree-lined landscape, 19th century, 5.5cm wide.
£40-60



Antique & Fine Art Sale, 16th Apr, 2024 - 17th Apr, 2024

- 207 **A black lacquer papier-mâché oblong snuff box**, the hinged cover painted with a scene depicting huntsman and deer by a rocky outcrop and waterfall, early 19th century, 7cm wide.
£40-60
- 208 **A pressed leather circular snuff box**, the detachable cover and base with central rosette and radiating pattern, 18th century, 5.5cm diameter.
Provenance: Christie's, 01 November 2000, lot 401A.
£40-60
- 209 **A black lacquer papier-mâché oblong snuff box**, the hinged cover painted with a flag, star and crescent symbols, surrounded by stars above gilt Arabic inscription and 'DEP.G.A.', all within simulated tortoiseshell border, 19th century, 9.5cm wide.
£40-60
- 210 **A horn oval snuff box**, the detachable cover with oval brass plaque engraved with initials 'EO', with blonde-coloured horn sides, late 18th century, 8cm wide.
£40-60
- 211 **A Scottish antler horn snuff box with tight fitting pull-off cover**, applied with silver disc engraved with initials 'JE' within foliate border, 19th century, 5.5cm wide.
£40-60
- 212 **A Scottish leather cut-cornered oblong snuff box**, the three-quarter hinged cover with silver oval initial plaque and curved silver thumbpiece, late 18th century, 7cm long.
£40-60
- 213 **A horn oblong snuff box**, the hinged cover with a colour depiction of a bearded figure and child between the layers of translucent horn, with brass hinge and brass studding around the borders and base, 19th century, 7.5cm wide.
£40-60
- 214 **A Scottish horn upright pointed oval snuff mull with unusual belt hook attachment** and combed hinge to cover, 19th century, 8cm high.
£50-80
- 215 **A Scottish flattened horn upright snuff mull with curved sides**, the three-quarter hinged cover with cut-cornered escutcheon engraved with initials 'AG', late 18th century, 7cm high.
£50-80
- 216 **A Scottish deer's hoof snuff box with pewter mounts**, the hinged cover engraved with hammerman symbols of crown and hammer, inscribed 'P Clark, A.W. 73rd', late 18th century, 8cm wide.
Literature: 73rd (Perthshire) Regiment of Foot was an Infantry Regiment of the British Army raised in 1780.
£50-100
- 217 **A Scottish small curly horn snuff mull with silver-plated collar and hinge**, mid-19th century, 5cm high.
£50-80
- 218 **A large patinated copper oval tobacco box**, the pull-off cover inscribed 'R. Whinorey, KENDAL', late 18th century, 12.5cm wide.
£50-80
- 219 **A cast brass circular snuff box**, the pull-off cover stamped with a commemorative portrait bust inscribed 'CHARLES JAMES FOX' within key pattern border, early 19th century, 8cm diameter.
£50-80
- 220 **A treen circular snuff box in finely grained polished wood with central sycamore disc**, with penwork coat of arms of Scott with recumbent deer crest and motto 'AMO PROBOS', early 19th century, 8cm diameter.
Literature: The arms as those of Scott of Malleny House, an historic house and garden. Owned by the National Trust for Scotland in Balerno, southwest of Edinburgh
£50-80
- 221 **A large cowrie shell snuff box with brass mounts**, the hinged cover engraved with a water jug and glass on a tabletop within incised borders, with script initials 'RMcF', late 18th century, 9cm long.
£50-70
- 222 **A Scottish curved horn snuff mull with silvered-metal engraved thistle hinge**, curved vacant cartouche and scalloped collar, mid-19th century, 10cm long.
£50-80
- 223 **A pewter snuff mull in the form of a 'curly horn' with black lacquer surface and bright-cut engraving**, stamped maker's mark 'CONSTANTINE' inside lid, early 19th century, 6cm high.
£50-80



Antique & Fine Art Sale, 16th Apr, 2024 - 17th Apr, 2024

- 224 **A pressed leather curved oblong snuff box with integral hinge**, impressed woven design within key pattern border, silver thumbpiece and oval vacant cartouche, circa 1800, 7.2cm long.
£50-80
- 225 **A pressed horn circular snuff box**, the pull-off cover with detailed river scene of fishing boat, figures with net, castle and bridge beyond, the base with central rosette, early 19th century, 8cm wide.
£50-80
- 226 **A leather navette-shaped snuff box**, with three-quarter leather integral hinge and silver oval plaque engraved 'Rt. Heward', silver thumbpiece and residual hair to surface, circa 1790, 9cm long.
£60-100
- 227 **A unusual Scottish ram's horn curved upright snuff mull**, carved to accentuate the natural ridges of the horn, with single loop brass hinge, early 19th century, 10.5cm high.
£60-100
- 228 **A Mauchline ware circular snuff box in richly grained wood with three-quarter opening integral hinge**, stamped maker's mark 'SMITH, MAUCLINE, MANUFACTURERS TO HIS MAJESTY' inside lid, early 19th century, 8.2cm diameter.
£60-100
- 229 **A silver-mounted nutshell snuff box with intricate silver hinged cover**, the catch with rotating disc, with scalloped collar and incised foliate borders, mid-18th century, 4.4cm long.
£60-100
- 230 **A pressed leather cut-cornered oblong snuff box with silver mounts and three-quarter opening hinge**, with alternate raised piqué-work decoration and reeded panels, the oblong cartouche with engraved initials, late 18th century, 8.2cm long.
£60-100
- 231 **A deer's hoof snuff mull**, the hinged tortoiseshell cover with piqué work thistle, rose and shamrock, with scallop thumbpiece and plaque engraved with initials 'BJ', early 19th century, 8.5cm long.
£60-100
- 232 **A large curved horn table snuff mull with pewter mounts and thistle terminal pierced with squares**, stamped maker's mark 'DURIE' inside lid, 19th century, 24.5cm long.
£60-100
- 233 **A Scottish deer's hoof snuff box with horn lid and multi-lugged integral hinge**, with silver vacant shield-shaped escutcheon, early 19th century, 7.5cm long.
£60-100
- 234 **A large curved horn table snuff mull with pewter mounts and thistle terminal** pierced with squares, with suspension chain, stamped maker's mark 'DURIE' inside lid, 19th century, 29cm long.
£60-100
- 235 **An unusual snuff box formed as a mussel shell**, highlighted in teal enamel on copper with silvered-brass mounts and hinged cover to base, 19th century, 7cm wide.
£60-100
- 236 **A coquilla nut oblong snuff box richly carved with military figures in a boat with a castle beyond**, the base with a figure on horseback (possibly Napoleon), the borders and ends richly carved with floral decoration, early 19th century, 8cm wide.
£60-80
- 237 **A Scottish leather upright oval snuff mull**, the silver hinged cover set with an oval creamy/grey banded agate within scalloped mount, with pierced scalloped borders, mid-18th century, 8.3cm high.
£60-100
- 238 **A treen circular snuff box**, the pressed wood detachable cover depicting embracing classical figures in a garden setting within French inscription 'LEUR DOUCE UNION FAIT NAITRE LA CONSTANCE' also inscribed 'L'AMOUR ET L'ESPERANCE', the base with impressed chequer design, with tortoiseshell lining, early 19th century, 6.8cm diameter.
£70-100
- 239 **An unusual treen rounded oblong snuff box with sliding pull-out sleeve interior** and Tunbridge ware-type chequered inlay panel and ends, 19th century, 8.5cm long.
£70-100
- 240 **A Scottish leather cut-cornered oblong snuff box with integral leather hinge**, silver plaque engraved with initials 'RG' in cursive flourished script within wriggle work borders, silver curved thumbpiece, late 18th century, 9.8cm long.
£70-100



Antique & Fine Art Sale, 16th Apr, 2024 - 17th Apr, 2024

- 241 **A novelty Scottish treen mallet-shaped snuff box**, the pull-off cover with baluster handle and integral snuff spoon, with tight fitting grooved collar, 19th century, 8.5cm wide.
£70-100
- 242 **An unusual octagonal cylindrical burr yew wood snuff box with black penwork edges**, one end sliding out to reveal a carved internal aperture, late 18th/ early 19th century, 7cm long.
£70-100
- 243 **A Mauchline Tartanware sarcophagus-shaped snuff box with incurved sides**, with overall intricate penwork tartan pattern, the hinged cover with silver plaque engraved with initials 'JY' in Gothic script, mid-19th century, 10.5cm wide.
£70-100
- 244 **A Scottish curved horn snuff flask**, the terminal with brass swivelling dispenser, hinged cover with twelve decorative brass rivets, mid 18th century, 7.5cm long.
Provenance: interior with Tessiers Ltd, London label inscribed George II, c.1740.
£70-100
- 245 **A Scottish deer's hoof snuff box**, with copper three-quarter hinged cover engraved with anvil, hammer and initials 'DD' within floral garlands, early 19th century, 10cm long.
£70-100
- 246 **A Scottish lignum vitae baluster snuff mull of rich colour and patination**, with pull-off cover and vellum covered tamper, mid-18th century, 6cm high.
£70-100
- 247 **A rare bone and treen circular lid from a snuff box**, the bone disc incised with inscription 'IF ANEY CHANCE THIS BOX TO FIND RESTORE IT UNTO ELLISEBETH FEARNE SID' and dated '1682', late 17th century, 5.1cm diameter.
£80-120
- 248 **A 19th century French silver-gilt oval snuff box**, the hinged cover embossed with two putti and a bird within scroll borders, the rim with French export marks c. 1895, 6.5cm wide.
£80-120
- 249 **A Scottish burr wood snuff box with integral hinge**, richly grained cover and base of naturalistic burr root, stamped maker's mark 'GEO. SINCLAIR, BONNINGTON' inside lid, early 19th century, 13cm long.
£80-120
- 250 **A Scottish small curly horn snuff mull with silver mounts**, the collar inscribed '1st Decr. 1841 James Milne Runciman', with thistle-engraved scroll hinge and initial disc engraved with hammerman symbols of crown above hammer, mid-19th century, 6.5cm high.
£80-120
- 251 **A bone trunk-shaped oblong snuff box**, the curved hinged cover carved with swags and posy 'WHEN THIS YOU SEE THINK ON ME', possibly prisoner of war work, early 19th century, 8cm wide.
£80-100
- 252 **A Scottish curly horn snuff mull with silver mounts**, the hinged cover with scalloped border and shield-shaped plaque engraved with crest and motto 'PRAESTA PRO PATRIA' for Neilson, the collar inscribed 'JAMES ROBERTSON', mid-19th century, 9cm high.
£80-120
- 253 **A black pressed horn circular snuff box**, the pull-off cover inset with lead medallion with a commemorative portrait of Matthew Boulton and two putti below, inscribed 'MATTHEW BOULTON F.R.S.' and 'SOHO' for the Soho Foundry created in 1775 by Matthew Boulton and James Watt at Smethwick, near Birmingham, late 18th/early 19th century, 6.3cm diameter.
£80-120
- 254 **A large pressed leather circular snuff box**, the detachable cover and base decorated with central rosettes and radiating patterns, mid-18th century, 9cm diameter.
Provenance: Christie's, 01 November 2000, lot 401A
£80-120
- 255 **A small cowrie shell snuff box with tortoiseshell hinged cover**, oval initial plaque and plain silver borders, late 18th century, 5cm long.
£80-120
- 256 **A Scottish curly horn snuff mull with silver mounts**, the collar inscribed 'Robt. Henderson' and dated '1798', with elaborate silver scrolled hinge and oval plaque engraved with initials 'RH', late 18th century, 7cm high.
£80-120



Antique & Fine Art Sale, 16th Apr, 2024 - 17th Apr, 2024

- 257 **A Scottish blonde curly horn snuff mull with octagonal panelled body and silver mounts**, the hinged cover with circular disc engraved with initials 'JH' dated '1832', with silver shield-shaped escutcheon to body engraved with anchor crest and motto 'EXPECTO' for Hepburn of Keith, early 19th century, 7.5cm high.
£80-120
- 258 **A Scottish leather shield-shaped snuff box with silver plaque engraved with an entwined cypher**, stamped maker's mark 'THO. CLARK, EDINR.' inside lid, mid-18th century, 8.5cm wide.
£80-120
- 259 **A Scottish curved horn snuff mull**, the tip carved as a pair of heeled boots, with brass plain butterfly hinge and oval plaque engraved with initials 'HF', circa 1790, 9.5cm high.
£80-120
- 260 **An unusual Scottish large horn snuff box formed as a book with curved spine and detachable cover**, with brass studded decoration, mid-19th century, 10.5cm long.
£80-120
- 261 **A Scottish tall baluster laburnum snuff mull**, the pull-off lid with leather loop handle and vellum covered tamper, mid-18th century, 9cm high.
£80-120
- 262 **Sir Walter Scott Interest - A copper and brass circular snuff box**, the pull-off cover embossed with a commemorative portrait of Sir Walter Scott, stamped 'SCOTT' and signed 'A J STOTHARD.F.', the base with a classical muse inscribed 'TO GREAT MEN', stamped 'Pub. by S PARKER, LONDON' and dated 'MDCCCXXV11', early 19th century, 6.5cm diameter.
£80-120
- 263 **A treen snuff box in the form of a square-toed shoe with sliding cover**, brass studded piqué-work decoration and pewter initial plaque, early 19th century, 10cm long.
£80-120
- 264 **An unusual Scottish burr wood snuff box**, the heart-shaped cover painted with a depiction of a woman on horseback within a narrow band of laurel leaves, with integral hinge and base of naturalistic burr root with four 'twig' supports, maker's mark 'W GRAHAM' inside lid, early 19th century, 8cm wide.
£80-120
- 265 **A leather cylindrical snuff box in the form of a travelling trunk**, with leather integral hinge, silver oval initial plaque, thumbpiece and lock escutcheon all with engraved borders, the ends with ring carrying handles and residual hair to the surface, late 18th century, 8.5cm wide.
£80-120
- 266 **A Scottish leather rounded oblong snuff box** with integral leather hinge and silver thumbpiece with bright cut engraving, stamped maker's mark 'ROBSON EDIN.R' inside lid, circa 1800, 9.5cm long.
£80-120
- 267 **A Scottish curly horn snuff mull**, the silver domed hinged cover set with a central smoky pink agate, inscribed 'John Duff' and dated '1851', 19th century, 7cm high.
£100-150
- 268 **A pressed horn oval snuff box**, the pull-off cover impressed with a commemorative bust portrait of Queen Anne wearing a crown and initialed 'AR' within foliate borders, highlighted in gilt, circa 1700, 6.5cm long.
Provenance: Christie's, October 29, 1968, lot 173.
£100-150
- 269 **A tortoiseshell oblong snuff box with overall wave pattern design**, with gilt-copper hinge, borders and shaped thumbpiece, mid-18th century, 6.5cm wide.
£100-150
- 270 **A Scottish slender curly horn snuff mull with plain silver collar**, the hinged cover with silver circular disc engraved with initials 'PD' within scalloped border, late 18th century, 7cm high.
£100-150
- 271 **A Scottish large curved horn snuff mull**, the silver collar inscribed 'Presented to Wr. Fonlie' and dated '1784', the shaped hinge engraved with a crown, the oval plaque engraved with a horse, late 18th century, 13.5cm wide.
£100-150
- 272 **A Scottish burr wood snuff box with integral hinge**, richly grained cover and base of naturalistic burr root, stamped maker's mark 'GEO. SINCLAIR BONNINGTON' inside lid, early 19th century, 10.5cm long.
£100-150



Antique & Fine Art Sale, 16th Apr, 2024 - 17th Apr, 2024

- 273 **A Scottish silver-mounted cowrie shell snuff box**, the three-quarter hinged cover engraved with anchor and entwined serpent crest for Elly, inscribed 'Andrew Elly Senr. Beggars Bush' and dated '1842', struck with maker's mark 'JH' inside lid (possibly for James Home or Hume of Edinburgh), early 19th century, 7.5cm long. Literature: An entry in the Edinburgh & Leith County Directory of 1842 gives Andrew Elley, gardener at Beggars Bush.
£100-150
- 274 **A pressed horn oval snuff box**, the hinged cover decorated with a pelican, basket and dog within scrolled cartouche, highlighted with gilt, the interior with handwritten label 'Lieut. George Thring R.N. his box 1755 when he was under Admiral Byng', early 18th century, 6.7cm wide.
£100-150
- 275 **A Mauchline ware oblong snuff box**, the hinged cover with finely drawn penwork scene of a turreted castle with arched gateway within wooded landscape (probably Castle Fraser, Aberdeenshire), the sides and base with lattice pattern, stamped with indistinct maker's mark inside lid, early 19th century, 8.3cm wide.
£100-200
- 276 **A leather cylindrical snuff box in the form of a travelling trunk with silver thumbpiece**, lock-plate escutcheon and navette-shaped plaque engraved with initials 'JF', late 18th century, 9cm long.
£100-150
- 277 **Coin interest - a Scottish curly horn snuff mull with silver butterfly-shaped hinge engraved with thistles and foliage**, the interior with a Charles I hammered coin pinned to the cork tamper, early 19th century, 7.5cm high.
£100-150
- 278 **A tortoiseshell oval upright snuff box with incurved sides**, the cover with silver stand-off hinge and navette-shaped silver plaque with pierced foliated scroll border, mid-18th century, 7.3cm wide.
£100-150
- 279 **A large Mauchline ware oblong snuff box**, the integral hinged cover decorated with fine penwork classical scene of a woman with basket of flowers and two children by a fountain, stamped maker's mark 'BOYD, CUMNOCK' inside base, early 19th century, 12.3cm wide.
£100-150
- 280 **A silver-mounted Mauritia Maculifera cowrie shell snuff box**, the hinged cover with richly chased foliage borders with scalloped edges, applied with a silver seven-pointed star, late 18th century, 7.5cm wide.
£120-180
- 281 **A Scottish treen hard wood baluster snuff mull with silver mounts**, the hinged cover with silver oval plaque engraved with initials 'JM' within eight domed silver decorative pins, mid-18th century, 5.3cm high.
£150-250
- 282 **A Scottish curly horn snuff mull**, the domed silver hinged cover finely chased with thistles, cottages and foliage, set with a faceted pointed citrine, engraved to the sides with initials 'To T.B.' and 'I.W.H', mid-19th century, 7.5cm high.
£150-250
- 283 **A Cittarium Pica 'magpie' shell snuff box**, carved to produce a decorative design, with reeded silver mounts and mother-of-pearl hinged lid carved with a lattice pattern, late 18th century, 6.5cm wide.
£150-250
- 284 **An attractive Scottish slender blonde curly horn snuff mull with silver mounts**, the hinged cover set with a russet coloured, flat-topped agate within chased foliate and scalloped borders, applied to either side with a silver stylised fleur-de-lis, early 19th century, 7cm high.
£150-250
- 285 **A Scottish treen oblong 'Blindman' table snuff box**, the hinged cover carved in high relief with a depiction of a woman wearing a bonnet and shawl and a seated man, with integral wooden hinge, with further carved sides and thumbpiece, mid-19th century, 12.5cm wide.
£150-250
- 286 **A mid-19th century Scottish carved treen 'Blindman' table snuff box**, the rectangular cover carved in high relief with two shepherds and their dog, the base with a shepherdess wearing a plaid, and the sides with sheep, with wooden hinge, 16cm wide.
£150-300



Antique & Fine Art Sale, 16th Apr, 2024 - 17th Apr, 2024

- 287 **Robert Burns Interest - A fine mid-19th century large Mauchline burr wood table snuff box**, the double hinged cover with pen-work portrait of Robert Burns and scene and verse from 'Tam o' Shanter', 'But pleasures are like poppies spread, you seize the flower the bloom is shed, or like the snow falls in the river, a moment white then melts forever,', 12cm wide.
£300-500
- 288 **A Scottish curly horn snuff mull with silver mounts**, the hinged cover set with a faceted amethyst intaglio engraved with 'ESTO PERPETUA' motto and clasped hands of friendship crest, mid-19th century, 7.5cm high.
£150-250
- 289 **A pressed horn oval snuff box**, the detachable cover depicting an angel with trumpet surrounded by intricate foliage pattern, with traces of gilt highlights, late 17th/ early 18th century, 7cm wide.
£150-250
- 290 **A Scottish squat treen baluster snuff mull with silver butterfly hinge**, the cover with silver oval plaque engraved with a crest and motto 'COGIT IN HOSTEM' (probably for MacGilchrist), mid-18th century, 7cm wide.
£150-200
- 291 **A Scottish lignum vitae baluster snuff mull**, with silver butterfly hinge and oval plaque engraved with initials 'BC' in cursive script, early 18th century, 5.5cm high.
£150-250
- 292 **A green hardstone upright octagonal faceted snuff mull with plain silver mounts**, the hinged cover set with a large cabochon rock crystal, early 19th century, 7cm high.
£150-250
- 293 **A Scottish large curly horn snuff mull**, the terminal carved as a snake's head with bone inset eyes, with plain brass butterfly hinge and vacant oval initial plaque, late 18th century, 11.5cm high.
£150-250
- 294 **A nut snuff flask gourd carved with stylised flower heads and with bone screw-off stopper**, in original fitted leather case, 18th century, 8.5cm high.
£150-250
- 295 **An unusual Scottish ox horn upright oval snuff box**, the hinged cover and sides incised with circles, stars and geometric foliate motifs, with brass stud decoration, late 17th century, 5.5cm high.
Literature: This type of simple incised decoration is found on Scottish powder flasks dating from the late 17th century.
£150-250
- 296 **A horn oval snuff box**, the detachable translucent pressed horn cover depicting figures with bows and arrows shooting at a stylized heart on a column, with inscription above 'SEEX TO ANOY IT', with cockerel and birds in flight below, highlighted in gilt, late 17th century, 6.2cm long.
£150-250
- 297 **A Queen Anne pressed horn oval snuff box**, the pull-off cover decorated with the coat of arms of Sir Francis Drake, inscribed above 'SIR FRANCIS DRAKE' and below 'SIC PARVIS MAGNA' which translates as 'Great things from small beginnings', probably by Obrisset, circa 1710, 10.5cm long.
£200-300
- 298 **An unusual Scottish small burr wood snuff box**, the three-quarter hinged cover painted with a depiction of a soldier in a red coat holding a sword and banner inscribed 'CHURCH & KING', and inscribed below 'The Standard', the upper cover with a delicate floral spray and base of naturalistic burr root, stamped maker's mark 'W GRAHAM, AYR' inside lid, early 19th century, 5cm wide.
£200-300
- 299 **A Scottish curved horn snuff mull with fluted body and silver curled terminal**, with gold vacant cartouches and plain silver hinged cover, late 18th century, 9.5cm long.
£200-300
- 300 **A Scottish leather upright oval snuff mull**, the silver hinged cover set with an oval pink banded agate within chased foliate band and openwork scalloped pierced border, mid-18th century, 8.3cm high.
£200-300
- 301 **A Scottish curved horn snuff mull**, the terminal carved as a whimsical seal's head with carved ears, bone inset eyes and teeth, with plain silver collar and circular initial disc, early 19th century, 10cm high.
£200-300



Antique & Fine Art Sale, 16th Apr, 2024 - 17th Apr, 2024

- 302 **A silver rounded oblong large snuff box**, the detachable bone cover with fine piqué work decoration of floral motifs within intricate entwined border, highlighted with vari-sized brass pins and red wax, within reeded silver rim and with plain silver base, early 18th century, 9cm wide.
£200-300
- 303 **A Scottish curly horn snuff mull formed as an elephant's head with bone tusks and inset eyes**, reeded silver rim and domed cover with silver scalloped border (with accompanying handwritten note from Alexander Norman Murdoch), early 19th century, 8cm high.
£300-500
- 304 **A fine Scottish burr yew oblong snuff box with incurved sides and integral wooden hinge**, the cover inset with eleven segmented specimen woods, each separate wood bearing inscription of it's origin: 'Queen Mary's Yew', 'The Victory', 'Oak of Alloway Kirk', 'Birk of Aberfeldie' etc, the underside decorated with the first verse (words and music) of Robert Burns' poem 'Auld Lang Syne', stamped maker's mark 'D CRAIG, HELENSBURGH' inside lid, early 19th century, 8.8cm wide.
£300-500
- 305 **A Mauchline ware oblong snuff box**, the hinged cover finely painted with a point-to-point racing scene with jockeys and horses jumping over a gate and wall in a country landscape, the sides and base with fine yellow diagonal lines against a dark green ground, stamped maker's mark 'SMITH, MAUCLINE, MANUFACTURERS TO HIS MAJESTY' and Royal Warrant inside lid, early 19th century, 8.3cm wide.
£300-500
- 306 **A Mauchline ware penwork rounded oblong snuff box with integral wooden hinge**, finely decorated with a depiction of a hunting scene in a wooded landscape, the sides and base profusely decorated with foliate pattern, stamped maker's mark 'BUCHANAN, CUMNOCK' to interior base, early 19th century, 10.2cm wide.
£300-500
- 307 **A Fine Dutch brass and copper oblong tobacco box**, the hinged cover and base with sliding panels revealing delicately engraved classical scenes with mythological figures, the interior with two hinged panels engraved with birds opening to reveal figures in various genre scenes against red velvet backing, early 18th century, 12cm wide.
£300-500
- 308 **A Scottish bone snuff spoon finely carved in the form of a recumbent horse**, with detailed bridle, reins, collar and saddle to both sides, with wood-inset eyes, incised tail and pierced oval bowl, early 19th century, 7.5cm long.
£100-150
- 309 **A rare Scottish bone snuff spoon carved in the form of a Highlander wearing kilt, sporran, plaid, Argyle socks and bonnet**, with blackened eyes and pierced oval bowl, early 19th century, 8cm long.
£100-150
- 310 **A group of eight Scottish snuff spoons of various shapes and sizes**, to include seven bone, three with ball finials; four with plain tapering stems, all with pierced oval bowls; and another blonde horn with pierced circular bowl, 19th century, the largest 7.4cm long (8).
£40-60
- 311 **A group of four Scottish silver snuff spoons**, comprising a Scots fiddle pattern engraved with initials 'AT'; another with tapering stem and shouldered bowl; a long stemmed spoon with suspension loop and pierced oval bowl; and a silver-plated fiddle pattern spoon, late 18th/early 19th century, the largest 10.3cm long (4).
£50-80
- 312 **Two Scottish carved snuff spoons** comprising: one carved in bone as a man in profile with golden patina, blackened eyes, buttons and pierced bowl; the other carved in horn as a leg and foot with oval bowl, late 18th/early 19th century, the largest 9.2cm long (2).
£50-70
- 313 **A group of seven Scottish carved bone snuff spoons of various shapes and sizes**, one with pierced heart finial; two of shaped outline; one with wrythen-fluted baluster stem; two fiddle pattern; and one with serrated edge, all with pierced oval bowls, late 18th/early 19th century, the largest 8.3cm long (7).
£60-100



Antique & Fine Art Sale, 16th Apr, 2024 - 17th Apr, 2024

- 314 **An unusual Scottish bone snuff spoon carved as a profile of a man with hatched bonnet**, the stem pierced with a heart, with curled end, pierced oval bowl and golden patina, early 19th century, 6.4cm long.
£50-100
- 315 **A Scottish bone snuff spoon carved in the form of a galloping horse**, with bridle, reins, and saddle to both sides, with ebony-inset eyes, incised tail and pierced oval bowl, early 19th century, 7.2cm long.
£80-120
- 316 **Three Scottish bone snuff spoons**, comprising one carved as a pair of fire tongs with pierced pointed oval bowl; one formed as a cricket bat with blackened reeded grip; and another with simple eared finial, early 19th century, the largest 8cm long (3).
£70-100
- 317 **A group of eight Scottish bone snuff spoons of various shapes and sizes**, with carved turned baluster stems and pierced oval bowls, late 18th/ early 19th century, the largest 7.5cm long (8).
£80-120
- 318 **A Scottish large bone snuff spoon with finely carved wrythen-fluted and hatched stem**, the spade-shaped finial with incised and blackened initials 'DN' over 'G' - perhaps betrothal initials, the reverse carved with a thistle, with pointed oval pierced bowl, early 19th century, 10.8cm long.
£80-120
- 319 **Three Scottish snuff spoons**, comprising one silver with hammer head finial; another bone with hammer head finial; and a patinated brass with baluster stem, all with pierced oval bowls, early 19th century, the largest 7.3cm long (3).
£50-80
- 320 **Two Scottish bone snuff spoons, each with cut and shaped stems**; one carved 'Wm. Spence'; the other carved 'T. Storer', with pierced oval bowls, early 19th century, the largest 9.5cm long (2).
£70-100
- 321 **A group of six Scottish bone snuff spoons of various shapes and sizes**, with carved turned baluster stems and pierced oval bowls, late 18th/ early 19th century, the largest 7.7cm long (6).
£40-60
- 322 **A group of five Scottish treen snuff spoons of various shapes and sizes**, to include one of shaped outline with pierced stem; another similar in light-coloured wood; another with hatched arrow feather motif; and two others, early 19th century, the largest 9cm long (5).
£40-60
- 323 **A group of five Scottish bone snuff spoons of various shapes and sizes**, one with pierced shaped stem and spade handle; two others similar with spade handles; another pierced with a heart; another pierced with a lozenge, all with pierced oval bowls, late 18th/ early 19th century, the largest 8.8cm long (5).
£50-80
- 324 **Three Scottish bone snuff spoons**, to include one with wrythen-fluted stem and pierced fretwork finial; another with pierced cylindrical stem; and one with shaped stem and hatched finial, with pierced oval bowls, late 18th/ early 19th century, the largest 9.2cm long (3).
£80-120
- 325 **Two Scottish carved bone snuff spoons each formed as a miniature 'love' spoon**, pierced with heart and geometric motifs, with fret-cut shaped borders and pierced oval bowls, late 18th/ early 19th century, the largest 9cm long (2).
£100-150
- 326 **A Scottish bone snuff spoon finely carved in the form of a recumbent horse**, with detailed bridle, reins, collar and saddle to both sides, with ebony-inset eyes, incised tail, pierced oval bowl and overall creamy patina, early 19th century, 8.2cm long.
£120-150
- 327 **Two unusual Scottish bone double snuff spoons**; one with carved and part-reeded baluster stem; the other with curved incised finial, each with pierced pointed oval bowls, early 19th century, the largest 9.4cm long (2).
£100-150
- 328 **A Scottish bone snuff spoon carved with a whimsical cockerel with blackened eyes and plumed tail**, the stem incised with initials 'D McK' and the square plinth with traces of initials 'EI', with deep circular pierced bowl and overall creamy patina, late 18th century, 6cm long.
£120-180



Antique & Fine Art Sale, 16th Apr, 2024 - 17th Apr, 2024

- 329 **After Charles Brooking (c.1723-1759)**
'A View of the Prince Frederick Privateer with the King George engaging the Gloriosa October 8th 1748 which ship was next day taken by His Majesties ship the Russell in company with the Privateers off Cape St. Vincent'
hand-coloured engraving
33cm x 45cm, framed and glazed 51.5cm x 63cm
£50-100
- 330 **Marius Bauer (1867-1932)**
Camel Train, No.87
etching, signed with initials lower right, numbered lower left
13.5cm x 45.5cm, framed and glazed 40cm x 69cm
£50-100
- 330A **After Edwin Landseer**
The Lost Sheep
engraving, published by Henry Graves & Co., 1864
96.5cm x 62cm, framed and glazed 109cm x 74cm
£50-100
- 331 **London & North Eastern Railway 'London, train services and fares from any L.N.E.R agency' advertising poster, 41cm x 63cm.**
£40-80
- 332 **Southern Railway advertising poster 'Summer Tickets', the artwork after Audrey Weber, printed by Waterlow & Sons Ltd, London, Dunstable & Watford, with ebonised header and footer, laid on cloth, 103cm x 63cm.**
£50-100
- 333 **Three vintage Southern Railway advertising posters, after Audrey Weber, comprising 'Summer', 'Autumn' and 'Winter', the 'Conducted Rambles' series, with ebonised header and footer, laid on cloth, Waterlow & Sons Ltd, Lith., London & Dunstable, 103cm x 63cm (3).**
£150-300
- 334 **Four vintage Southern Railway advertising posters No. 1, 2, 3 & 4, 'Winter Pastime Series' of four paintings in tempura by Miss Helen Ray Marshall, printed in England at The Baynard Press, London SW9, with ebonised headers and footers, laid on cloth, 103cm x 63cm (4).**
£200-400
- 335 **After Aubrey Beardsley**
The Peacock Skirt
lithographic print
135cm x 98cm, framed 141cm x 103cm
£200-300
- 335A **ARR Sir Sidney Nolan C.B.E., O.M., R.A. (Australian, 1917-1992)**
Rinder Subject I and another, Rinder Subject II, a pair
lithographs, I signed lower right and numbered 7/70 lower left and II signed lower left and numbered 7/70 lower right
both 49.5cm x 65cm, both framed and glazed 54cm x 69cm (the glass on I is damaged)
£250-500
- 335B **ARR Laurence Stephen Lowry RA (1887-1976)**
Industrial Scene
offset lithograph in colours, signed in pencil lower right, published by Venture Prints Ltd., 1974, with the Fine Art Trade Guild blind stamp
37.5cm x 26.5cm, framed and glazed 62cm x 51cm
£800-1,200
- 336 **ARR Hazel Nagl RSW (b.1953)**
The Cherub Bird Bath
watercolour, signed lower right
22.5cm x 28cm, framed and glazed 42.5cm x 46.5cm
£50-100
- 337 **Attributed to Sam Bough RSA RSW (1822-1878)**
Coastal landscape
watercolour, signed lower right
24cm x 34.5cm, framed and glazed 51cm x 60cm
£50-100
- 338 **ARR Andrew Taylor Elder (1908-1966)**
Reverie
mixed media, signed lower right
33.5cm x 49.5cm, framed and glazed 53.5cm x 68.5cm
£70-150
- 339 **ARR Alan Sutherland (1931-2019)**
Female nude
chalk and pastel, signed lower right
46.5cm x 41.5cm, framed and glazed 68.5cm x 62cm
£70-150
- 340 **S. Lewis (19th century)**
A meadow with cattle grazing
watercolour, signed lower left
26.5cm x 45.5cm, framed and glazed 43.5cm x 61.5cm
£70-150



Antique & Fine Art Sale, 16th Apr, 2024 - 17th Apr, 2024

- 341 **ARR M. T. Heath (20th century)**
Still life with yellow roses in a glass jar
watercolour, signed and dated '80 lower left
23.5cm x 17.5cm, framed and glazed 35.5cm x
29.5cm
together with four other various works by the
same hand.
£70-150
- 342 **ARR Martin John Aynscomb-Harris (1937-2016)**

Harbour Scene
watercolour and gilt, signed lower right
23cm x 33cm, framed and glazed 46.5cm x
54cm
£70-150
- 343 **Late 19th century British School**
A gorge with ruined stone bridge
watercolour
75.5cm x 52.5cm, framed and glazed 86.5cm x
64.5cm
£100-200
- 344 **ARR Fyffe Christie (1918-1979)**
Recumbent female nude
watercolour and gouache, signed lower left,
dated June 1972
31.5cm x 57cm, framed and glazed 61cm x
85cm
£100-200
- 345 **John Terris R.S.W. R.I. (1865-1914)**
Fishing boats in harbour
watercolour, signed lower left
47cm x 72cm, framed and glazed 79.5cm x
102.5cm
£100-200
- 346 **Hans Jacob Hansen RSW (1853-1947)**
Greyfriars Kirkyard and Edinburgh Castle
watercolour, signed lower right
39cm x 54cm, framed and glazed 67cm x 83cm
£150-250
- 347 **ARR Aleksander Zyw (1905-1995)**
Still life, mixed flowers in a glass vase
pastel and charcoal, signed lower right
48cm x 35.5cm, framed and glazed 65cm x
51.5cm
£200-300
- 348 **Alfred William Hunt RWS (1830-1896)**
Study at Mürren, Lauterbrunnen
watercolour, signed with initials lower left and
dated 1860, inscribed on paper label verso
30cm x 26cm, framed and glazed 52cm x 48cm
£250-500
- 349 **David West RSW (1868-1936)**
Morayshire coastline with Lossiemouth
Lighthouse
watercolour, signed lower left
24cm x 35cm, framed and glazed 44cm x 55cm
£300-500
- 349A **A. Paterson (19th century)**
Gathering wheat, Nigg Bay with Old St. Fittick's
Church, Aberdeen
watercolour, signed and dated 1885 lower left
47cm x 75cm, framed and glazed 69cm x 97cm
£150-300
- 349B **Jan van Couver (Dutch 1836-1909)**
Canal scene with chapel spire and another,
canal scene with windmill, a pair
watercolours, signed lower right and lower left
respectively
51cm x 34cm, framed and glazed 62cm x 45cm
£150-300
- 349C **Andrew Black RSW (1850-1913)**
St. Monans Kirk
watercolour, signed lower left and inscribed
lower right
57.5cm x 39cm, framed and glazed 65.5cm x
46.5cm
£100-200
- 350 **ARR Mabel Lucie Attwell (1879-1964)**
This Little Pig Went to Market
watercolour and body colour
25cm x 19cm, framed and glazed 44cm x 37cm

Note - Design for postcard No.1169 for
Valentine of Dundee.
£200-300
- 351 **James Watterson Herald (1859-1914)**
Street scene with figures
watercolour, signed lower left
35.5cm x 47cm, framed and glazed 59.5cm x
70.5cm
£500-800
- 351A **James Watterson Herald (1859-1914)**
Croyden
watercolour, signed and dated '98 lower right,
inscribed lower left
34cm x 22.5cm, framed and glazed 55.5cm x
43cm
£500-800
- 351B **James Watterson Herald (1859-1914)**
A Village harbour scene, possibly Arbroath
watercolour, signed lower left
44cm x 35.5cm, framed and glazed 63.5cm x
53.5cm
£800-1,200



Antique & Fine Art Sale, 16th Apr, 2024 - 17th Apr, 2024

- 352 **ARR William Miller Frazer RSA (1864-1961)**
Mouth of Tay
oil on board
19cm x 27cm, framed 27cm x 34.5cm
£100-200
- 353 **ARR William Miller Frazer RSA (1864-1961)**
Perthshire Highland landscape
oil on board
19cm x 27.5cm, framed 27cm x 35.5cm
£100-200
- 354 **ARR William Miller Frazer RSA (1864-1961)**
On The Dochart, Killin
oil on board
18.5cm x 27.5cm, framed 27cm x 36cm
£150-300
- 355 **Late 19th century British School**
Portrait of a jester drinking from a flagon
oil on canvas
19cm x 17cm, framed 36cm x 34cm
£70-150
- 356 **G. Dow (late 19th/ early 20th century)**
The Violinist and another, The Scholar, a pair
oils, signed lower middle
19.5cm x 16cm, framed and glazed 37.5cm x 34.5cm
£100-200
- 357 **Attributed to James Giles RSA (1801-1870)**
Elderly male seated smoking a pipe, and
another Interior scene with recumbent dog, a
pair
oils
19cm x 14.5cm and 19cm x 15.5cm, both
framed and glazed 29cm x 25cm and 29cm x 26cm
£100-200
- 358 **William Page Atkinson Wells (1872-1923)**
River landscape
oil on canvas, signed and dated 1909 lower left
50.5cm x 76cm, unframed
£100-200
- 359 **ARR Annabel Kidston (1896-1981)**
Still life with dahlias
acrylic
50cm x 70.5cm, framed and glazed 64.5cm x 85cm
£100-200
- 360 **J B McDonald (late 19th century)**
Burns Birthplace
oil on canvas, signed lower right
34cm x 52cm, framed 49.5cm x 67cm
£100-200
- 361 **Alexander Kellock Brown RSA RSW RI (1849-1922)**
Autumnal landscape with girl walking on a
bridge
oil on canvas, signed with initials lower right
60cm x 29.5cm, framed 74.5cm x 44cm
£100-200
- 362 **Late 18th / early 19th century British school**
Half-length portrait of a gentleman
oil on canvas
62cm x 49cm, framed 79cm x 66cm
£100-200
- 363 **19th century British School**
Two terrier dogs
oil on canvas
41cm x 51cm, framed 52cm x 63cm
£100-200
- 363A **ARR James S Davis DA RSW (b.1944)**
The Wee Red Ferry - Easdale
acrylic on gesso panel, signed lower left
48.5cm square, framed 74cm square
£300-500
- 364 **ARR Mary Edmond (b.1929)**
Summer
oil on canvas, signed, inscribed and dated 1953
verso
75cm x 100cm, framed 86.5cm x 112cm
£100-200
- 365 **ARR Willem Heytman (Dutch, b.1950)**
Beach scene with children paddling
oil on canvas, signed lower right
49cm x 60cm, framed 65cm x 76cm
£150-300
- 366 **ARR Joseph Urie (b.1947)**
Spanish Incidents (Hope)
oil on paper, inscribed on label verso
65.5cm x 46cm, framed 96cm x 74cm
£150-300
- 367 **Attributed to Macneil MacLeay ARSA (19th century)**
Stirling
oil on canvas, signed, inscribed and dated 1858
lower left
37cm x 58.5cm, framed 62.5cm x 83cm
£150-300
- 368 **ARR Joseph Urie (b.1947)**
The Blue Forest
oil on paper, signed and dated '83 lower left
51cm x 62.5cm, framed and glazed 64cm x 76.5cm
£150-300



Antique & Fine Art Sale, 16th Apr, 2024 - 17th Apr, 2024

- 369 **19th century British School**
A pair of husband and wife portraits
oil on canvas
52.5cm x 42.5cm, framed 73cm x 63cm
£150-300
- 370 **Late 18th/ early 19th century British School**
Half length portrait of a Gentleman
oil on canvas
74.5cm x 62cm, framed 105cm x 92cm
£150-300
- 371 **Algernon Talmage RA (1871-1939) after John Singleton Copley**
Half length portrait of Frances Tucker Montresor

oil on canvas, signed lower left
75cm x 62.5cm, framed 95cm x 83cm
£200-400
- 372 **James Hall Cranstoun (1821-1907)**
Melrose Abbey
oil on canvas, signed lower left, inscribed verso
40cm x 60cm, framed 63cm x 83cm
£200-400
- 372A **Manner of Patrick Nasmyth (19th century)**
The angler's pool
oil on canvas
44.5cm x 59.5cm, framed 61.5cm x 77cm
£250-500
- 372B **Andrew Douglas RSW (1870-1935)**
A moorland burn
oil on canvas, signed lower left and inscribed on label verso
55cm x 78cm, framed 72cm x 95cm
£250-500
- 372C **P. Yani (late 19th/ early 20th century)**
Entrance to the Market
oil on canvas, signed lower left and inscribed on label verso
43cm x 26.5cm, framed 53cm x 36cm
£80-120
- 373 **Early 20th century European School**
Portrait of two sisters
oil on canvas, indistinctly signed upper left
67cm x 54cm, framed 79cm x 66cm
£200-300
- 374 **After Oliver Clare**
Still life with strawberries, grapes and apples
oil on board, signed lower left
16.5cm x 23.5cm, framed 30cm x 37cm
£200-300
- 375 **Alfred De Breanski (fl.1869-1893)**
'Crummock Water' Evening
oil on canvas, signed lower right, inscribed verso

49.5cm x 74.5cm, framed 67cm x 94.5cm
£3,000-5,000
- 376 **19th century Continental School**
Country lane with ladies riding in donkeys with attendant knight and companion
oil on board
29cm x 44.5cm, framed 49cm x 64cm
£200-300
- 377 **Manner of Richard Wilson (18th century)**
St Albans Lake
oil on canvas, inscribed verso
37cm x 48cm, framed 50.5cm x 61cm
£200-400
- 378 **J Douglas Scott (19th century)**
Fishing on the Dochart
oil on canvas, signed and dated 1875 lower left
50cm x 74cm, framed 74cm x 95cm
£200-400
- 379 **Alexander Kellock Brown RSA RSW RI (1849-1922)**
Dunnottar Castle
oil on canvas, signed with initials lower right and dated '75, inscribed verso
30cm x 58.5cm, framed 56cm x 84.5cm
£250-500
- 380 **William Deshazo (American, 20th century)**
Sunset with breaking waves
oil on board, signed lower right
90.5cm x 121cm, framed 114cm x 145cm
£250-500
- 381 **Early 20th century British School**
Still life with potatoes and carrots
oil on canvas, indistinctly signed lower left
'Edward..?'
38cm x 49cm, framed and glazed 61cm x 70cm
£300-500
- 382 **Newlyn School (late 19th/ early 20th century)**
Returning from sea
oil on canvas
57cm x 100cm, framed 83cm x 126cm
£300-500
- 383 **Manner of Sir Joshua Reynolds (1723-1792)**
Portrait of Miss Mathew, later Lady Elizabeth Mathew, and her dog
oil on canvas
75cm x 62cm, framed 111cm x 98cm
£400-600



Antique & Fine Art Sale, 16th Apr, 2024 - 17th Apr, 2024

- 384 **J. Gerold (late 19th century)**
Stormy seas, bailing out the lifeboat
oil on canvas, signed lower left
66cm x 103cm, framed 13cm x 140cm
£400-600
- 385 **ARR Simeon Stafford (b.1956)**
Cityscape
oil on board, signed lower left
60cm x 65cm, framed 77cm x 82cm
£400-600
- 386 **ARR Simeon Stafford (b.1956)**
Beach scene with figures, donkeys and lighthouse
oil on canvas, signed lower right
80.5cm square, framed 90cm square
£400-600
- 387 **ARR Donald Morison Buyers RSW (1930-2003)**
The yellow landscape
oil on board, signed and dated '62 lower left
74.5cm x 99.5cm, framed 86cm x 111cm
£400-600
- 387A **ARR Sir Sidney Nolan C.B.E., O.M., R.A. (Australian, 1917-1992)**
Landscape with trees
colour on composition board, signed and dated '68 lower right
51.5cm x 75.5cm, framed 76cm x 106cm
£2,000-3,000
- 388 **George Houston RSW RSA RGI (1869-1947)**
Summer landscape
oil on canvas, signed lower left
44cm x 59cm, framed 56cm x 71cm
£400-600
- 389 **ARR Ian Gilbert Marr Eadie (1913-1973)**
Spanish Village
oil on canvas, signed lower right and dated '70, inscribed on label verso
59cm x 89cm, framed 73.5cm x 104cm
£400-600
- 390 **ARR Alan B. Hayman (b.1947)**
Luig from Seil
oil on board, signed and dated '06 lower right, inscribed verso
29.5cm x 60cm, framed 54.5cm x 85cm
£400-600
- 391 **Hans Jacob Hansen RSW (1853-1947)**
North African street scene with figures taking shade
oil on panel, signed lower right
29cm x 40.5cm, framed 46cm x 57.5cm
£400-600
- 392 **Joseph Denovan Adam RSA RSW (1842-1896)**
A Crofters Byre, No.4
oil on canvas, signed lower left, inscribed on label verso
49cm x 74.5cm, framed and glazed 78.5cm x 104cm
£400-600
- 393 **Robert MacGowan Coventry ARSA RSW (1855-1914)**
Coastal scene with fisherman and fishing boats at low tide
oil on canvas, signed and dated 1893 lower left
58cm x 89cm, framed 82cm x 112cm
£500-800
- 394 **George Houston RSW RSA RGI (1869-1947)**
West Coast scene at low tide with lady carrying pails
oil on canvas, signed lower right, dated '96
59.5cm x 90.5cm, framed and glazed 77cm x 106cm
£700-900
- 395 **Johannes Rosierse (Dutch, 1818-1901)**
Chiaroscuro scene with three girls preparing food in a kitchen
oil on panel, signed lower left
48cm x 37cm, framed 74cm x 64cm
£500-800
- 396 **17th/ 18th century Continental School**
Half length portrait of a Gentleman wearing black velvet coat
oil on canvas, feigned oval
33cm x 27cm, framed 47cm x 41cm
£400-600
- 397 **17th/ 18th century Continental School**
Half length portrait of a Gentleman wearing blue velvet coat
oil on canvas, feigned oval
35.5cm x 28cm, framed 49cm x 42cm
£400-600
- 398 **Attributed to Rigaud (17th/ 18th century)**
Half length portrait of Duchesse De Bourbon
oil on canvas
39.5cm x 30.5cm, framed 52cm x 43cm
£400-600
- 399 **Two boxed bottles of The Glenmorangie single Highland malt Scotch whisky, 10 year old, 70cl, 40% Vol, one in presentation tin, the other in presentation cardboard tube (2).**
£30-70



Antique & Fine Art Sale, 16th Apr, 2024 - 17th Apr, 2024

- 400 **Two boxed bottles of Highland Park 12yr old single malt Scotch whisky**, comprising boxed Viking Honour 700ml, 40% Vol, and the Original 12 year old in presentation cardboard tube, 70cl, 40% Vol. (2).
£30-70
- 401 **Two bottles of single malt Scotch whisky**, to include boxed Old Pulteney aged 12 years, 70cl, 40% Vol, together with a boxed Glen Ord aged 12 years, 20cl, 40% Vol. (2).
£30-70
- 402 **Two boxed bottles of single Highland malt Scotch whisky**, to include Dalwhinnie single Highland malt Scotch whisky, 15 year old, 70cl, 43% Vol, together with a boxed bottle of Auchentoshan single malt Scotch whisky, three wood finished in Spanish sherry casks, 700ml, 43% Vol. (2).
£30-70
- 403 **A boxed bottle of Buchanan's 'The Royal Household' Scotch whisky**, 70 proof, 75.7cl.
£50-100
- 404 **Two bottles of single Highland malt Scotch whisky**, to include boxed Royal Lochnagar 12 year old, 75cl, 40% Vol, together with boxed bottle of Lagavulin 16 year old, 70cl, 43% Vol. (2).
£50-100
- 405 **Three boxed bottles of Old Fettercairn single Highland malt Scotch whisky**, 75cl, 40% Vol. (3).
£70-150
- 406 **A boxed bottle of The Glenrothes single Speyside malt Scotch whisky**, distilled in 1984, bottled in 1996, 700ml, 43% Vol.
£70-150
- 407 **Six assorted boxed bottles of Glenfiddich single malt Scotch whisky**, to include four 12 year old, 70cl, 40% Vol, one Special Reserve 70cl, 40% Vol, and one Special Old Reserve 1 litre (6).
£100-200
- 408 **Two bottles of vintage port**, to include, Taylors 1966, bottled 1968, 75cl., and Smith Woodhouse & Co. 1982, bottled in 1984, 20% alc., 75cl., (2).
£50-100
- 409 **One bottle, Moet Chandon Dom Perignon, vintage 1985**, 12.5% vol., 75cl.
£100-200
- 410 **One bottle, Moet Chandon Dom Perignon, vintage 1985**, 12.5% vol., 75cl.
£100-200
- 411 **One bottle, Moet Chandon Dom Perignon, vintage 1985**, 12.5% vol., 75cl.
£100-200
- 411A **One vintage bottle of George Goulet, Champagne, circa 1970's**.
£30-70
- 411B **Two bottles of vintage wine**, to include, Baron Philippe de Rothschild, Mouton-Cadet, Bordeaux, 1977, 75cl., and Bouvet Ladubay, Saumur Champigny, 1978, 73c., (2).
£30-70
- 411C **One bottle of Chateau Latour, Premier Grand Cru Classe, 1973, 73cl**.
£100-200
- 411D **One bottle of Chateau Latour, Premier Grand Cru Classe, 1973, 73cl**.
£100-200
- 411E **One bottle of Chateau Latour, Premier Grand Cru Classe, 1973, 73cl**.
£100-200
- 412 **An Elizabeth II silver circular box, Birmingham, 1960**, makers mark of B&Co, the hinged cover with engine turned details opening to a velvet lined interior, raised on three shaped feet, gross weight 4.6 troy oz, 8.5cm diameter x 4.5cm high.
£40-80
- 413 **A 19th century Dutch silver oval cachou box**, engraved with a floral spray, with 'snap-fitting' hinged cover, 5cm wide.
£40-60
- 414 **A 19th century Dutch silver rectangular box, formed as a miniature casket**, with engraved foliate decoration, folding bracket handle and gilt interior, 5.5 cm wide.
£50-80
- 415 **A George VI silver cigarette case, Birmingham 1940**, makers mark of D&F, with engine turned decoration, 10.5cm wide, 4.5 troy oz.
£50-100
- 416 **An Edwardian silver calling card case, Birmingham 1901**, of hinged rectangular form opening to a blue satin lined interior, with embossed C-scroll details, 8.5cm wide, together with a George V silver cigarette case, Birmingham, 1919, 9cm wide, gross weight 5.6 troy oz, (2).
£50-100
- 417 **An Edwardian silver pin cushion modelled as a pig, Birmingham 1909**, makers mark for 'Adie & Lovekin Ltd', 2.5cm high x 4cm wide.
£50-100



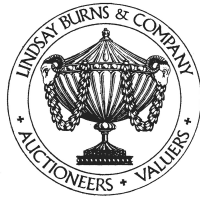
Antique & Fine Art Sale, 16th Apr, 2024 - 17th Apr, 2024

- 418 **A George III white metal etui**, of tapered rectangular form, with push button cover opening to a fitted interior with four removable accoutrements, 9cm high.
£50-100
- 419 **A Victorian silver-plated and gilt metal twin-handled cup**, decorated in high relief with a frieze of Classical figures, bearing presentation shield inscribed '1st A.B W.A.V. F BATTERY 40 Pounder Won by Gunner Barber 1878', 22cm high.
£50-100
- 420 **A set of six silver plated mother-of-pearl handled fruit knives and forks**, makers mark of JR&S, in fitted mahogany box, together with a set of twelve silver plated mother-of-pearl handled fruit knives and forks in fitted box bearing retailers label for Whytock & Sons, Dundee (2).
£50-100
- 421 **A group of Victorian and later silver**, to include a George V calling card case, Birmingham, 1913, makers mark of MH&CoLd., 8.3cm long; a shaped hexagonal saucer dish with reeded rim, Birmingham, 1919, makers mark of SWS&Co., 10.2cm diameter; and a stamp holder, London, 1899, makers mark of Sampson Mordan & Co., with blue satin covered pull out stamp sleeve, 4.5cm long, gross weight 3.4 troy oz (3).
£70-150
- 422 **A set of six early 19th century Scottish Provincial silver dessert spoons, Perth**, makers mark of RK for Robert Keay, fiddle pattern, engraved with initial 'R', each struck 'RK' three times and double headed eagle twice, 6.4 troy oz (6).
£70-150
- 423 **A set of twelve Victorian silver teaspoons, Glasgow, 1854**, makers mark of M&C, fiddle pattern, engraved with initials 'EY', 9.2 troy oz (12).
£70-150
- 424 **A set of twelve Victorian silver teaspoons and a pair of sugar tongs, Edinburgh, 1837**, makers mark of DG, the tongs 1850, fiddle pattern, the tongs with shell shaped bowls, 7.2 troy oz (13).
£70-150
- 425 **A Victorian Scottish silver christening mug**, in the Indian taste, richly embossed with a band of zodiacal symbols and foliage, on spreading base, by R. Stewart, Glasgow, 1887, 9.5cm high.
£100-150
- 426 **A Continental silver casket, import marks for Chester, 1902**, maker BM, the hinged cover with embossed decoration of three gladiators and onlookers, the sides embossed with pairs of musical putti, 9.5cm wide x 6cm high x 6.7cm deep, 5.9 troy oz; together with a smaller Continental silver oval shaped box, makers mark of BHM, the hinged cover embossed with figures, the sides embossed with musical putti, 6cm wide x 4cm high x 4.5cm deep, 1.7 troy oz (2).
£100-200
- 427 **An Edwardian silver mounted sgian-dubh, Edinburgh, 1907, makers mark rubbed**, the wooden handle carved with knot work and woven detail, the silver mounts engraved with thistles, 20cm long.
£100-200
- 427A **A William IV silver three-handled footed bowl, London, 1831, makers mark of Edward, Edward Junior, John & William Barnard**, of shallow circular form with part gadrooned body, set with three double looped handles, raised on three foliate cast legs with paw feet resting on a platform base, 12.5cm wide x 11.5cm high, 16.2 troy oz.
£100-200
- 427B **A silver mounted desk magnifying glass, London, 2003, makers mark of WRA for William & Son (William Asprey)**, 81.3mm diameter x 53.6mm high.
£50-100
- 428 **A pair of Victorian silver quaichs, Edinburgh, 1886, makers mark of JA, probably that of James Aitchison**, decorated with a panelled border of Celtic knotwork, the lugs similarly decorated, 9.5cm wide x 3cm high, 2.8 troy oz.
£100-200
- 429 **A George III silver chamber candlestick, London 1767, makers mark 'E.C' for Ebenezer Coker**, engraved with armorial crest, raised on three shell-shaped feet with corresponding drip pan and later conical snuffer, 12.3 troy oz, 15.5cm diameter.
£100-200



Antique & Fine Art Sale, 16th Apr, 2024 - 17th Apr, 2024

- 430 **A group of silver flatware**, to include a set of three Victorian table spoons, Exeter, 1868, makers mark of JW&JW, fiddle pattern with bright cut decoration and engraved initials; a George III Scottish silver table spoon, Edinburgh, 1804, makers mark of WA, Old English with pointed end and engraved initials; an Irish Georgian table spoon, some marks rubbed, maker J.S, Old English with pointed end, bright cut decoration and initials, and a George III table spoon, London, 1788, maker GG, Old English with bright cut decoration and initials, gross weight 12.6 troy oz (6).
£120-180
- 431 **A George V silver twin-handled bowl, Sheffield, 1927, makers mark of H.A.**, oval-shaped with wavy rim, raised on four pierced shell shaped feet, with presentation inscription to the underside, 22.5cm wide, 14 troy oz.
£150-250
- 432 **A collection of twenty-two assorted silver vesta holders, 19th century and later, various dates and makers**, the largest 4.8cm x 4.4cm, 14.1 troy oz, together with a glazed display case (22).
£200-400
- 433 **A group of Edwardian and later silver**, to include a teapot and matching milk jug, Birmingham, 1903 and 1904, makers mark of WB Ld., raised on three shell shaped feet, gross weight 19 troy oz; together with a George V twin handled milk jug, Birmingham, 1912, makers mark of J.G. Ld, 2.6 troy oz; and a twin handled sugar bowl, Birmingham, 1912, makers mark of W.A, 4.5 troy oz (4).
£250-400
- 434 **A George V silver three-piece tea set, London, 1926, makers mark of W&S**, oval shaped with fluted detail to the corners, each piece raised on four ball shaped feet, gross weight 29 troy oz.
£250-400
- 435 **A pair of Edwardian silver three-light candelabra, Sheffield, 1904, makers mark of Hawskworth Eyre & Co. Ltd**, with hexagonal shaped columns supporting detachable branch sections, the borders with beaded detail, loaded, 41cm high x 35.5cm wide.
£400-600
- 436 **A composite suite of Victorian silver flatware**, fiddle pattern, comprising twelve dessert forks, London, 1881, makers mark of GA and twelve dessert spoons, London, 1895, makers mark of GMJ, engraved with initial 'R', gross weight 40.3 troy oz (24).
£400-600
- 437 **A composite suite of Victorian silver flatware**, fiddle pattern, comprising twelve table forks, London, 1881, makers mark of GA, and twelve tablespoons, London, 1895, makers mark of GMJ, engraved with the initial 'R', 59.4 troy oz (24).
£600-900
- 438 **A 19th century Continental, probably French, silver twin-handled tray**, the sole engraved with armorial crest, the rim chased and pierced with harebells and swags, set with four oval portrait medallions, the handles formed as tied ribbons, stamped marks, approximately 80 troy oz, 64cm x 42.5cm.
£800-1,200
- 439 **A Victorian silver part canteen of silver flatware, London, 1898, makers mark of GJ over DF for Josiah Williams & Co.**, Old English pattern, engraved with armorial crest, comprising twenty one table forks; eighteen table spoons; twenty two dessert forks and twenty two dessert spoons, gross weight 168 troy oz; together with two matched silver plated table spoons, all contained within a fitted oak box with recessed brass military type handles to the sides.
£1,500-2,500
- 440 **A Victorian and later twelve place setting of Kings pattern silver flatware, various makers and dates**, comprising twelve table forks; twelve tablespoons; twelve dessert forks; twelve dessert spoons; twelve teaspoons; six egg spoons and two knives, gross weight 150 troy oz.
£1,500-2,500
- 441 **A silver pair cased pocket watch, John Ivison, Carlisle, 3227**, with Roman numeral dial, watch case diameter 50.5mm, suspended on white metal chain.
£50-100



Antique & Fine Art Sale, 16th Apr, 2024 - 17th Apr, 2024

- 442 **A vintage Seiko wristwatch**, the silvered dial with baton numerals, day and date aperture, case diameter 36.3mm; together with a vintage Rotary gold-plated wristwatch lacking strap; a Jupex gold plated wristwatch lacking strap; three other assorted ladies watches; a Flick Envoy gas lighter and a Royal Worcester Queen Elizabeth II commemorative ceramic brooch (8).
£50-100
- 443 **A collection of four late 19th/ early 20th century gold plated pocket watches**, to include an open faced 'Dover' watch with Arabic numeral dial, 50.3mm diameter; a 'Lothian Super Lever' hunter cased watch with Roman numeral dial, 50.5mm diameter; an 'The Angus' hunter cased watch with East Fife F.C. Scottish Cup Winners 1938 engraved to the inner cover, 50.8mm diameter; and Hunter cased watch with presentation inscription dated 1914, 50.3mm diameter (4).
£70-150
- 444 **A vintage 'Buren' 9ct gold gentlemen's wristwatch**, with black and white Roman numeral dial and subsidiary seconds dial, case diameter 28.8mm, gross weight 21.6 grams; together with a vintage ladies 9ct gold wristwatch, gross weight 10 grams, both lacking straps (2).
£70-150
- 445 **A ladies 9ct gold Rotary ring watch**, the circular dial with baton numerals within an open-work woven border, size 'K', gross weight 13.2 grams.
£200-300
- 446 **A 15ct gold fob watch**, the black and white dial with Arabic numerals, case diameter 27.3mm, gross weight 15.4 grams.
£200-300
- 447 **A 9ct gold hunter cased pocket watch**, the black and white dial with Roman numerals and subsidiary seconds dial, case diameter 34.3mm, gross weight 30 grams.
£200-300
- 448 **A late 19th / early 20th century yellow metal fob watch**, the white, red and black Roman numeral dial with gilded details, the back of the case engraved with initials, the interior stamped '18k', the bow with continental import marks and 18ct gold hallmark, 29.9mm diameter, gross weight 21.8 grams, suspended on a yellow metal ribbon tied brooch, stamped '15', gross weight 6.5 grams.
£300-500
- 449 **A 9ct gold and white metal diamond set cocktail watch**, the silvered dial with baton numerals, within a single line border of eight-cut diamonds, gross weight 32.6 grams.
£300-500
- 450 **An 18ct gold open faced pocket watch**, Thos. Armstrong, Liverpool, No. 12666, the engine turned dial with Roman numerals, case diameter 37.3mm, gross weight 40.8 grams.
£300-500
- 451 **A vintage ladies yellow metal and diamond set Liga bangle watch**, the rectangular dial with Arabic numerals in an Art Deco case set with two small diamonds, gross weight 27.8 grams.
£400-600
- 452 **Golay Fils & Stahl, Geneve, a yellow metal and diamond set brooch watch**, the white enamel dial with red and black Arabic numerals within a single line border of rose cut diamonds, stamped '18K', overall width 37.1mm, gross weight 14.9 grams.
£400-600
- 453 **A vintage Heuer Calculator Automatic Chronograph stainless steel wristwatch**, circa early 1970's, with blue dial and orange hands, case diameter 45.7mm, with original bracelet strap.
£800-1,200
- 454 **A Victorian gold sovereign**, dated 1855.
£250-400
- 455 **A Victorian gold sovereign**, dated 1890.
£250-400
- 456 **A Victorian gold sovereign**, dated 1889.
£250-400
- 457 **An Edward VII gold sovereign**, dated 1903.
£250-400
- 458 **An Edward VII gold sovereign**, dated 1904.
£250-400
- 459 **A George VII gold sovereign**, dated 1910.
£250-400
- 460 **A George V gold sovereign**, dated 1928.
£250-400
- 461 **An Elizabeth II gold sovereign**, dated 1980.
£250-400
- 462 **An Elizabeth II gold sovereign**, dated 2005.
£250-400
- 463 **A late 19th century yellow metal necklace with yellow metal scarab beetle pendant**, the necklace marked 9ct, gross weight 8.7 grams, 45.5cm long.
£100-200



Antique & Fine Art Sale, 16th Apr, 2024 - 17th Apr, 2024

- 464 **A collection of gold**, to include four shirt studs stamped 9ct, a larger shirt stud stamped 9ct, and a yellow metal part necklace stamped 9KT, gross weight 4.4 grams (6).
£50-100
- 465 **A yellow metal necklace suspending compass pendant**, gross weight 10 grams, together with a yellow and white metal watch chain, gross weight 8.5 grams (2).
£150-300
- 466 **A 9ct gold wedding ring**, ring size 'U', 6.4 grams.
£70-150
- 467 **A 9ct gold rope twist necklace**, 38.5cm long, 7.6 grams.
£100-200
- 468 **An 18ct gold wedding ring**, ring size 'I/J', together with two other 18ct signet rings, gross weight 9.4 grams (3).
£120-180
- 469 **A vintage 9ct gold hinged bangle**, 6.6 grams, 63.7mm wide, together with a yellow metal tie pin, stamped 9ct, 4 grams, 51.9mm wide (2).
£100-200
- 470 **A collection of four assorted 9ct gold banknote charms**, comprising one cylindrical 26.6mm long and three rectangular, the largest 24.5mm x 15.8mm, gross weight 12.8 grams (4).
£50-100
- 471 **A pair of 18ct gold oval cufflinks**, each with one panel bearing engraved initials, the other panels vacant, 7.7 grams, together with a single 18ct gold octagonal shaped cufflink, 4.4 grams (3).
£300-500
- 472 **A 9ct gold sovereign holder**, with engraved foliate detail, 34.2mm diameter, 23.3 grams.
£350-500
- 473 **A 9ct gold charm bracelet**, suspending eight circular charms, 18cm long, gross weight 30.7 grams.
£400-600
- 474 **A 9ct gold curb link Albert chain with T-bar suspension**, 38cm long, 30.8 grams.
£400-600
- 475 **A late 19th century yellow metal guard chain**, approximately 148cm long, 32.5 grams.
£500-800
- 476 **A 9ct gold double chain bracelet**, with heart-shaped lock, approximately 17cm long, gross weight 36.2 grams.
£500-800
- 477 **A 9ct gold graduated Albert chain with T-bar suspension**, 38.5cm long, 40.8 grams.
£600-900
- 478 **A yellow metal Albert chain with T-bar suspension**, stamped '15', 32.3 grams.
£700-900
- 479 **A late 19th / early 20th century 9ct gold bar brooch**, 41.2mm wide, 1.8 grams.
£20-50
- 480 **Two pieces of silver jewellery**, to include a paste set cocktail ring, size 'Q'; together with a silver and marcasite lozenge shaped pendant and chain. gross weight 18.1 grams (2).
£40-80
- 481 **A silver and pearl necklace together with a matching pair of earrings**, necklace 45cm long, gross weight 24.5 grams (3).
£40-80
- 482 **A 9ct gold signet ring**, size 'P', gross weight 3.8 grams.
£40-80
- 483 **A 9ct gold and blood stone signet ring**, gross weight 6.6 grams.
£50-100
- 484 **A platinum wedding ring**, of plain circular form, size 'I', 3 grams.
£50-100
- 485 **A pair of late 19th century Etruscan style yellow metal and green stone ball shaped drop earrings**, with raised wire work detail, one set with two small green stones, the other missing one stone, approximately 11mm diameter, gross weight 4.1 grams, together with a pair of 9ct gold triple ball cluster stud earrings, 1.4 grams (4).
£50-100
- 486 **A late 19th century yellow metal necklace with split pearl decorated pendant**, 4.4 grams, together with a 9ct gold necklace suspending two yellow metal pendants, gross weight 2.9 grams (2).
£70-150
- 487 **A group of four assorted yellow metal dress rings**, gross weight 8.1 grams (4).
£70-150
- 488 **A 9ct gold and garnet set pendant suspended on a gold-plated necklace**, together with a pair of 9ct gold and garnet set cluster stud earrings, gross weight 9 grams (3).
£70-150



Antique & Fine Art Sale, 16th Apr, 2024 - 17th Apr, 2024

- 489 **Two late 19th/ early 20th century yellow metal dress rings**, comprising a single stone rock crystal ring, stamped '15ct', ring size 'M', gross weight 4.8 grams and a 15ct gold emerald and split pearl ring, ring size 'L', gross weight 1.4 grams (2).
£70-150
- 490 **A late 19th century yellow metal mounted banded agate brooch**, of rounded rectangular form, 51mm wide, together with a yellow metal mounted oval cameo brooch, carved with a girl holding a floral garland, 48.5mm long (2).
£70-150
- 491 **A yellow metal and split pearl dress ring**, size 'J', gross weight 7 grams.
£70-150
- 492 **A group of three rings**, to include a 9ct gold dress ring, size 'N' and two other 9ct gold and gem set rings, gross weight 7.8 grams (3).
£70-150
- 493 **A 15ct gold and split pearl dress ring**, size 'N', gross weight 1.8 grams, together with another yellow metal, split pearl and synthetic ruby ring stamped '15', size 'M', gross weight 3 grams (2).
£70-150
- 494 **A 9ct gold gem set panther ring**, size 'M', gross weight 5 grams.
£70-150
- 495 **A yellow metal and turquoise bracelet**, set with a row of five cabochon cut turquoise, stamped '9c', gross weight 5.5 grams.
£70-150
- 496 **A collection of four assorted yellow metal stick pins**, to include opal set shamrock pin; turquoise and serpent pin; split pearl and peridot three stone pin and a diamond set pin, approximately 58mm long, gross weight 5.3 grams (4).
£70-150
- 497 **A group of late 19th/ early 20th century yellow metal jewellery**, to include an amethyst nine stone oval brooch, 35.8mm wide; a split pearl decorated circular brooch, 37.4mm diameter, and two yellow metal oval lockets, gross weight 40.8 grams (4).
£100-200
- 498 **An 18ct gold and pearl five stone ring**, size 'S', gross weight 4.2 grams, together with two other 18ct gold dress rings, gross weight 3.7 grams (3).
£100-200
- 499 **A Victorian yellow metal and polished stone circular brooch**, 30.2mm diameter.
£100-200
- 500 **A 9ct gold and amethyst Maltese cross pendant and chain**, together with a pair of matching stud earrings, gross weight 8.4 grams (3).
£100-200
- 501 **A 9ct gold signet ring**, size 'O', together with two other 9ct gold rings, gross weight 8.2 grams (3).
£100-200
- 502 **A late 19th / early 20th century yellow metal citrine and split pearl hinged bracelet**, 62.9mm wide, gross weight 12.6 grams, in original leather and velvet lined box.
£120-180
- 503 **A yellow and white metal sapphire, diamond, demantoid garnet and pearl brooch/ pendant**, gross weight 6.1 grams, 42.6mm wide.
£150-300
- 504 **A 9ct gold almandine garnet and rare-earth synthetic garnet, in imitation of diamond, cluster ring**, one diamond missing, size 'R', gross weight 2.8 grams.
£150-300
- 505 **A yellow metal serpent necklace**, stamped '9ct', 8.4 grams; together with a yellow metal necklace stamped '9ct', 3.7 grams and another unmarked yellow metal necklace, 3 grams (3).
£150-300
- 506 **A butterscotch amber necklace, formed from a row of graduated amber beads**, gross weight 34.6 grams, 60cm long, together with another amber necklace, gross weight 60.6 grams, 84cm long, and a collection of loose red amber beads, 22 grams (qty).
£150-300
- 507 **A yellow and white metal diamond cluster ring**, set with a central round brilliant cut diamond in a border of twelve smaller round brilliant cut diamonds, stamped '18CT FINE PLAT', size 'N', gross weight 2.4 grams.
£150-300
- 507A **A suite of yellow metal pearl and amethyst jewellery**, comprising; a necklace stamped '9K'; bracelet, stamped '9K' and pair of earrings, stamped '9CT', gross weight 17.3 grams.
£80-120



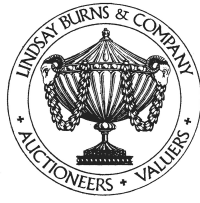
Antique & Fine Art Sale, 16th Apr, 2024 - 17th Apr, 2024

- 507B **A collection of four late 19th century and later stick pins**, comprising; a yellow metal diamond cluster pin, 65.7mm long, 2.3 grams; a yellow metal and oval facet cut citrine pin, 73.3mm long, 2.4 grams; a yellow metal and opal topped pin, 65.9mm long, 1.1 grams, and a yellow and white metal bee topped pin, 42.4mm long (4).
£80-120
- 507C **A Victorian yellow metal portrait brooch/ locket**, enclosing a half-length portrait of a Military officer painted on ivory, within a rope twist border, 44.9mm long x 39.7mm wide, gross weight 16.6 grams.
Ivory Act 2018 (2022) compliant with non-transferable APHA registration, reference 2UF82BCK.
£70-150
- 507D **An early 20th century Egyptian Revival silver and plique a jour scarab brooch**, stamped '800', 48.4mm wide, gross weight 5 grams, together with an Art Nouveau yellow metal, split pearl and green stone pendant, stamped '9CT' 29.5mm long, gross weight 1.6 grams (2).
£80-120
- 507E **A collection of five yellow metal fob seals, 19th century and later**, comprising a red stone set fob with intaglio carved heart enclosing the bust of a lady inscribed 'C'EST TOUT A' ELLE', 24.4mm high; a purple stone set fob with intaglio carved bust of a gentleman, 23.2mm; a yellow stone set fob with intaglio carved bust of a Gladiator, 26.4mm high; a purple stone set fob with intaglio carved detail 'Souvenir', 26mm high, and a bloodstone set fob with intaglio carved initial 'H', 22mm high (5).
£100-200
- 507F **A 19th century white metal mounted banded agate desk seal**, set with a yellow stone intaglio carved 'FIDELITY' over a running dog, 56mm high, together with a 19th century yellow metal mounted sulphide brooch in green decorated with the head of a Roman male, 20.6mm x 16.6mm (2).
£70-150
- 507G **A collection of assorted white metal jewellery**, to include a shield shaped brooch set with coloured semi-precious gems, 46.6mm long; a lozenge shaped brooch set with nine moonstone cabochons, 21.9mm wide; an oval agate brooch, 43.6mm wide; a polished pebble set brooch, 44.1mm wide; a Viking long boat brooch, 28.3mm wide and a red stone set ring, size P (6).
£70-150
- 507H **A late 19th century white and yellow metal glass set oval brooch**, set with fourteen imitation glass diamonds, 43.2mm x 35.4mm, together with another similar bar brooch, 54mm wide; a decorative dragon fly brooch; a white and yellow metal circular brooch with later double tassel drop, and a white metal belt buckle (5).
£50-100
- 508 **A 22ct gold wedding ring**, of plain circular form, size 'R', 4.5 grams.
£150-300
- 509 **A cased set of yellow metal mounted banded agate shirt studs and pair of cufflinks, together with a similar yellow metal ring**, stamped '9C', ring size 'P'.
£150-300
- 510 **A late 19th century yellow metal locket brooch**, centred with a stylised flower, the reverse with glazed locket compartment, stamped 'K18', 36.2mm diameter, gross weight 9.4 grams.
£200-300
- 511 **An 18ct gold and synthetic ruby flower brooch**, stamped marks, 43.4mm long, gross weight 8.4 grams.
£200-300
- 512 **A yellow metal and opal curb link bracelet**, set with five cabochon cut opals, stamped '15', together with four loose links, gross weight 10.7 grams.
£200-300
- 513 **A collection of four assorted 9ct gold gem set dress rings**, gross weight 15.6 grams (4).
£200-300
- 514 **An 18ct gold serpent ring**, size 'L/M', 9.1 grams, together an 18ct gold and diamond single stone ring, size 'O', gross weight 2.7 grams (2).
£250-400
- 515 **A collection of six assorted yellow metal brooches**, to include diamond studded brooch stamped '18c', 43.1mm long, gross weight 5.8 grams; 15ct diamond studded brooch, 47.2mm wide, gross weight 4.1 grams; an amethyst and split pearl brooch, stamped '9ct', 45.8 mm wide, gross weight 2.2 grams; a Victorian yellow metal circular locket brooch, 34.5mm wide, gross weight 7.3 grams; and unmarked bird brooch, 47.3mm wide, 7.4 grams; a yellow metal and citrine set oval brooch, 25.6mm wide, gross weight 4.2 grams; together with an Avon bar brooch, 53.3mm wide (7).
£250-500



Antique & Fine Art Sale, 16th Apr, 2024 - 17th Apr, 2024

- 516 **An 18ct gold and diamond signet ring**, the matrix with intaglio decoration of a sailing ship within a border inscribed 'The Burgh of Buckhaven, Methil & Innerleven', the reverse engraved 'Provost Taylor 1917-1920', size 'S', gross weight 11.7 grams, in leather and velvet lined box.
£250-400
- 517 **A yellow metal and moonstone hinged bangle**, centred an oval cabochon cut moonstone flanked on either side by a row of four graduated moonstone cabochons, 64.9mm wide, gross weight 21.6 grams.
£250-500
- 518 **A white and yellow metal, ruby and diamond cluster pendant and chain together with a pair of 18ct gold, ruby and diamond cluster drop earrings**, the pendant centred with a round faceted ruby calculated to weigh 0.64ct within a border of ten round brilliant cut diamonds estimated to weigh 0.05ct each, suspended on a yellow metal chain; the earrings each centred with a pear-shaped faceted ruby, both estimated to weigh 0.38ct, each with eleven round brilliant cut diamonds estimated to weigh 0.03ct, gross weight 5.5 grams (3).
£250-500
- 519 **A yellow metal ruby and diamond cluster ring**, centred with a pear-shaped ruby calculated to weigh 0.56ct, within a border of twelve round brilliant cut diamonds and a further border of twenty eight tapering baguette cut diamonds, total diamond weight calculated at 2.10ct, size 'S', gross weight 6.6 grams.
£300-500
- 520 **A yellow metal necklace suspending a yellow metal, diamond and coloured stone pendant**, set with garnets, peridots, amethysts, blue topaz and citrines, stamped '14K', the necklace stamped '9K', pendant 54.5mm long including bail, necklace 50cm long, gross weight 23.7 grams.
£400-600
- 521 **An early 20th century yellow and white metal split pearl and diamond hinged bangle**, centred with a diamond studded flower within a single line border of split pearls, 64.6mm wide, gross weight 19 grams.
£500-800
- 522 **A yellow metal pearl and sapphire studded chainmail purse suspended on a 9ct gold chain**, the purse 55.4mm wide x 73.3mm long, gross weight 38.1 grams.
£600-900
- 523 **A 9ct gold articulated serpent necklace and matching bracelet**, with synthetic ruby inlaid eyes, gross weight 47.4 grams.
£700-900
- 524 **An 18ct gold, emerald and diamond three stone ring**, centred with a round brilliant cut diamond calculated to weigh 1.15ct flanked by two pear-shaped faceted emeralds, each estimated to weigh 0.80ct, size 'O', gross weight 3.8 grams.
£800-1,200
- 525 **A mid 20th century white metal, emerald and diamond cluster ring**, centred with a rectangular faceted emerald estimated to weigh 1.18ct, within a double line border of forty-four eight cut diamonds each estimated to weigh 0.02ct, size 'O', gross weight 4.5 grams, in a burgundy coloured leather box with gilt detail.
£800-1,200
- 526 **An early 20th century white metal, emerald and diamond cluster ring**, centred with an emerald cut emerald, calculated to weight 0.62ct, within a border of eight brilliant cut diamonds, each estimated to weigh 0.14ct, size 'M/N', gross weight 4.8 grams, in HUNT & ROSKELL, BOND ST, LONDON box.
£1,200-1,800
- 527 **A pair of 19th century facet-cut glass rummers**, 17cm high.
£20-50
- 527A **A 19th century glass ewer, probably Holyrood Glassworks**, in the Roman style with double spiral handle and wheel cut decoration of stylised flowers and foliage, 31.5cm high.
£50-100
- 528 **An early 20th century French opalescent glass dish**, moulded with three swirling koi carp, signed on the underside P D'AVESN FRANCE, 30cm diameter.
£50-100
- 529 **An early 20th century clear and gilded glass tall tazza**, 22cm high.
£50-100
- 530 **Verly, France, an Art Deco smoky quartz coloured glass circular shaped box and cover**, the cover moulded with mistletoe, moulded marks, 13.5cm diameter x 4cm high.
£50-100



Antique & Fine Art Sale, 16th Apr, 2024 - 17th Apr, 2024

- 530A **A Monart vase, shape HF**, mottled blue and pink with three typical whorls and gold coloured inclusions, 17.5cm high.
£70-150
- 531 **Military interest - A twin-handled Staffordshire pottery porringer**, decorated with violets and with gilt inscription 'Corporal J. Toplass, Sherwood Foresters, wounded at Rammicourt, Oct 3rd 1918', 15cm high.
£30-70
- 532 **A Victorian Majolica pottery Aesthetic 'bird and fan' pattern oval dish**, with yellow fans on a turquoise ground, 19th century, 32cm wide.
£40-80
- 533 **A collection of Wedgwood Jasperware**, to include six blue ground items, shaped circular box and cover, 12.5cm diameter; egg shaped box and cover, 10cm long; shaped circular box and cover, 7.5cm wide; heart shaped dish, 11.5cm; pear shaped vase, 12.5cm high; urn shaped vase, 8.5cm high and a yellow and black Jasperware dish 'Am I not a man and a brother', 11.5cm diameter (7).
£50-100
- 534 **A painted pottery bowl in the style of Roger Fry for the Omega Workshops**, decorated with an exotic bird and stylised clouds, the fluted sides with stylised foliage and further clouds, unmarked, c.1915, 18.5cm diameter.
£80-120
- 535 **Charles Vyse, a pottery figure group of a female flower seller**, modelled holding a basket of primroses and violets in her left hand, a spray of the same flowers in her right hand, painted marks and dated 1926, 26.5cm high.
£500-800
- 535A **ARR Stella R. Crofts (1898-1964)**, a ceramic figure group modelled with four giraffes, incised marks, 17cm high.
£70-150
- 536 **A pair of Minton Majolica pottery vases, dated 1866**, decorated in relief with three white petalled flowers on a cobalt blue ground, impressed marks, 18cm high.
£80-120
- 537 **A Spode Camilla pattern part dinner set**, printed marks.
£100-200
- 537A **A pair of Spode puce printed 'Tower' pattern oversized kettles and covers**, black printed marks, 30cm high, (2).
£50-100
- 538 **A late 19th/ early 20th century Coalport twin handled urn and cover**, decorated with a hand-painted oval panel enclosing colourful flowers and fruit within a richly gilded border, printed and painted marks, 36cm high.
£100-200
- 539 **A Coalport hand-painted twin handled urn and cover**, 'To commemorate the 25th anniversary of the Coronation of Her Majesty Queen Elizabeth II 1953-1976' No.30/50 pieces, signed 'C. Hollinshead', printed marks, 31cm high.
£100-200
- 540 **A Coalport hand-painted blue ground urn and cover**, decorated with a view of Balmoral Castle, signed 'M. Harnett', Limited Edition No. 4/50 pieces, printed marks, 24.5cm high.
£100-200
- 541 **A Royal Worcester twin-handled urn, dated 1912**, with hand-painted of two sheep grazing in a mossy landscape, signed 'E. Barker', puce printed marks, shape number '2121', 16cm high.
£300-500
- 542 **A Royal Worcester twin-handled bottle vase, dated 1903**, with a hand-painted view of Windsor Castle, signed 'H. Davis', puce printed marks, shape number '2151', 28.5cm high.
£800-1,200
- 543 **A large pair of Royal Worcester female tambourine players, modelled by James Hadley**, with red, green and gilt details, incised marks and puce printed marks, approximately 75cm and 74cm high.
£2,000-3,000
- 544 **Two Royal Dux porcelain figures**, comprising male fruit picker holding a basket laden with fruit, stamped marks no.1838, 28cm high; together with another of a female fish lady holding a basket of fish, stamped marks, no.2222, 24.5cm high (2).
£50-100
- 545 **A Royal Dux porcelain figure group modelled with male and female musicians playing the pipes and tambourine**, impressed marks no.357, 29.5cm high.
£50-100
- 546 **A Royal Dux porcelain figure of a Belle Epoque lady**, impressed marks, no.1140, 55cm high.
£50-100



Antique & Fine Art Sale, 16th Apr, 2024 - 17th Apr, 2024

- 547 **Two Art Nouveau Royal Dux porcelain figures**, both modelled with a lady by a shell well, impressed marks, no.1047, 24cm high; and no.1049, 25.5cm high (2).
£70-150
- 548 **A Royal Dux porcelain figure of a boy riding a donkey**, impressed marks, no.1989, 376cm high.
£100-200
- 549 **An Art Nouveau Royal Dux porcelain figure of lady and shell**, impressed marks, no.1776, 30.5cm high.
£100-200
- 550 **A Royal Dux porcelain figure of a potter**, stamped number '129', 19.5cm high x 15cm wide.
£70-150
- 551 **A collection of fifteen assorted Delft blue and white pottery tiles**, approximately 13cm square.
£100-200
- 552 **A late 18th / early 19th century blue and white Delft pottery charger**, decorated in the Chinese style with fenced garden of flowers, peony and rockwork, the rim with yellow line detail, 35cm diameter.
£70-150
- 553 **A large Swedish Rorstrand Majolica ewer and domed cover**, decorated with lion masks, swags and winged griffins, painted mark 'Rorstrand', 1872, 34cm high.
£50-100
- 554 **An antique Maiolica pottery flagon**, decorated with scrolling foliage with vacant scroll banner, 26cm high.
£150-300
- 554A **A pair of 20th century Continental porcelain pedestal bowls**, each with pierced lattice work sides, the details picked out in gilt, with painted bands of stylised flowers, foliage and ivy, 26.5cm diameter x 19cm high.
£50-100
- 554B **A pair of Italian pottery chargers, late 19th/ early 20th century**, decorated with musicians, 38cm diameter.
£70-150
- 554C **A large Amphora pottery Art Deco vase**, decorated with stylised flowers and foliage, printed marks, 48cm high.
£50-100
- 555 **A pair of late 19th century French Bisque porcelain figures**, modelled as a boy playing the mandolin and a girl playing the tambourine, impressed marks, 49cm high.
£100-200
- 556 **A Herend porcelain basket, 20th century**, decorated with floral spray to the interior, the exterior decorated with leaves and fruit, printed marks, 15.5cm diameter x 8cm high.
£50-100
- 557 **A rare pair of early 20th century Menton pottery 'Lemons' vases**, of tree trunk form decorated in relief with fruit and foliage, painted marks signed 'Perret', with hand-written provenance note, 34cm high; together with a small octagonal shaped dish decorated in relief with olives, stamped marks 'Tardieu Felix, MENTON', 12.5cm diameter (3).
£150-300
- 558 **A Berlin porcelain tureen and cover**, the bowl with moulded basket weave around the rim and painted sprays of Deutsche Blumen, the cover with Bacchanalian cherub finial and two painted panels depicting banqueting scene and family scene, blue sceptre mark, 34cm high x 26.5cm diameter.
£200-300
- 559 **A Vienna porcelain hand-painted cabinet plate titled 'Die Toupe Des Achilles'**, printed and painted marks, 24.5cm diameter.
£200-300
- 560 **A Vienna porcelain cabinet plate titled 'Venus and Adonis'**, printed and painted marks, 24.5cm diameter.
£200-300
- 561 **A pair of Italian pottery drug jars of Alberello form**, one inscribed 'E-Di-Psilio', the other inscribed 'Romano-Philonio', 20.5cm high.
£400-600
- 562 **A pair of late 19th century French gilt metal mounted Sevres style porcelain urns**, later converted to table lamps, decorated with hand-painted panels of 18th century figures and landscape views within richly gilded borders, the ormolu mounts cast with female masks and foliage, (one vase in need of attention), 66cm high to top of handles.
£500-800



Antique & Fine Art Sale, 16th Apr, 2024 - 17th Apr, 2024

- 563 **A late 19th century French ormolu mounted porcelain table centrepiece**, the oval porcelain bowl decorated with hand-painted scene of lady on a swing with two male attendants to one side, and a lady in a garden of flowers to the other, all within richly gilded and jewelled borders, the ormolu mount cast with female heads, foliage and fruit, 45cm wide x 32cm high.
£600-900
- 564 **A late 19th / early 20th century Dresden porcelain urn, cover and stand**, the urn decorated with colourful figural panel depicting Cupid and two classical maidens to one side, a large spray of Deutsche Blumen to the other, the shoulders set with figural terminals, the pierced cover with flower encrusted on a similarly decorated base with four scroll feet, 56cm high.
£800-1,200
- 565 **A Meissen porcelain table centrepiece**, modelled with a pierced oval bowl supported on a tree form column with male and attendant female, with flower encrusted details on a C-scroll base, blue cross swords mark, incised number '2772' and red-painted mark '21', 49.5cm high x 31cm wide.
£800-1,200
- 566 **A Chinese porcelain blue and white flower shaped dish, Qing Dynasty**, decorated with pavilions in a river landscape with sampan and fisherman, within a panelled border, 25.5cm diameter.
£50-100
- 566A **A Chinese porcelain hexagonal shaped twin handled archaic style monochrome green glazed vase, Qing Dynasty**, with incised four character mark, 28.5cm high.
£100-200
- 566B **A pair of Chinese porcelain aubergine, blue and green glazed models of hawks**, 21.5cm high.
£70-150
- 567 **A Chinese porcelain blue ground footed bowl, late 19th/ early 20th century**, decorated with lotus scroll, bats and shou characters, 10.5cm diameter x 5.2cm high.
£50-100
- 568 **Two pieces of Chinese Armorial famille rose porcelain, Qing Dynasty**, comprising a small shaped circular plate, 15cm diameter, and a small oval shaped dish, 13.5cm wide, both decorated with ribbon-tied bow suspending a shield bearing initials, within a floral garland border (2).
£50-100
- 569 **A pair of decorative ceramic figure groups, 20th century**, modelled as male holding teapot in his right hand, coffee pot in his left hand, together with companion figure of a female holding a flower branch in her right hand, 42cm high.
£100-200
- 570 **A pair of Chinese porcelain famille rose crackle glazed Warrior vases converted to table lamps, Qing Dynasty**, with later brass lamp fittings, porcelain element 30.5cm high.
£100-200
- 571 **A Chinese porcelain figure of Lohan and dragon, late 19th / early 20th century**, decorated with a red, black and turquoise green glaze, the details picked out in gilt, 30cm high.
£100-200
- 572 **A Chinese porcelain famille rose crackle glazed Warrior jar and cover, late Qing Dynasty**, decorated with a procession of warriors on horseback and foot within stylised borders, 42.5cm high.
£100-200
- 573 **A pair of Chinese porcelain blue and white crackle glaze vases converted to table lamps, late Qing Dynasty**, each decorated with a pair of dragons contesting a pearl with later brass lamp fittings, porcelain element 29.5cm high.
£150-300
- 574 **A Chinese porcelain blue and white crackle glazed vase, Qing Dynasty**, decorated with scholar and three boys in a fenced garden, with lion mask and ring terminals, 35.5cm high.
£150-300
- 575 **A Chinese porcelain Sang de Boeuf glazed vase converted to a table lamp, late 19th / early 20th century**, the porcelain vase cut down at the neck, mounted with a pierced wooden cover and pierced wooden stand accommodating a later brass light fitting, overall height 48cm high.
£200-300
- 576 **A Chinese porcelain famille rose canton vase converted to a table lamp, Qing Dynasty**, decorated with panels of figures divided by panels of flowers, fruit and birds, the neck with shishi and ball terminals, the shoulders set with pairs of chilong, with later brass lamp fittings, porcelain element 36cm high.
£200-300
- 577 **A Chinese porcelain famille verte vase, Qing Dynasty**, decorated with birds and blossom, blue 'double circle' mark to base, 27cm high.
£200-300



Antique & Fine Art Sale, 16th Apr, 2024 - 17th Apr, 2024

- 578 **A Chinese porcelain famille rose punch bowl, Qing Dynasty**, the interior decorated with peony spray, the exterior decorated with panels of figures in a fenced garden, divided by small panels enclosing baskets issuing peony, 33.5cm diameter x 14cm high.
£250-500
- 579 **A pair of Chinese porcelain famille rose crackle glazed Warrior vases, late Qing Dynasty**, decorated with warriors on horseback and standing figures, the necks with shishi terminals, the shoulders set with pairs of chilong, 33.5cm high.
£300-500
- 580 **A large Chinese porcelain celadon ground vase, Qing Dynasty**, decorated with shishi and five cubs, the details picked out in under glaze blue, the neck set with two pairs of shishi terminals, 60cm high.
£300-500
- 581 **A pair of Chinese porcelain famille rose canton vases, Qing Dynasty**, decorated with rectangular shaped panels of figures on a terrace and panels of flowers, fruit and birds, on a richly gilded green scroll ground, the neck decorated with pairs of shishi dogs, the shoulders set with pairs of chilong, 44cm high.
£800-1,200
- 582 **A Chinese porcelain famille rose Export Armorial octagonal shaped dish, Qing Dynasty**, the gilded and enamelled armorial within a border of scattered foliate sprays, 29cm x 21.5cm.
£200-300
- 583 **A pair of Chinese porcelain famille rose Export Armorial decorated octagonal shaped dishes, Qing Dynasty**, decorated with Hope and shield bearing the arms of Ker and Martin family, the rim decorated with oval shaped panels representing the four known quarters of the globe, 25cm x 17.5cm.
£400-600
- 584 **Two Chinese bamboo brush pots, 20th century**, carved with figures and trees, 20.5cm high (2).
£40-80
- 585 **A Chinese painted silk picture, late 19th century**, depicting ladies seated at a table playing the game of Go, some damages, 80.5cm x 39cm, framed 86.5cm x 45.5cm.
£50-100
- 586 **A Chinese gilt metal seal, early 20th century**, modelled with three dragons and a flaming pearl, all with inlaid eyes, 7.5cm square x 9.5cm high.
£100-200
- 587 **A Chinese pale celadon jade panel**, carved and pierced in the form of a vase with dragon handles, the octagonal centre section pierced with a bat and ruyi fungus, with incised line details, mounted on a carved and pierced darkwood stand, 12cm high, together with a green stone disc, 6cm diameter (2).
£100-200
- 588 **A pair of Chinese green stone models of Ox, early 20th century**, carved standing, mounted on carved and pierced wood stands, approximately 10.5cm high x 11.5cm wide.
£100-200
- 589 **A Chinese bronze mirror**, of circular form, cast with two borders of Archaic style motifs, 13cm diameter.
£100-200
- 590 **A Chinese bronze mirror**, of circular form, cast in relief with four stylised animals, 19cm diameter.
£100-200
- 591 **A collection of eleven Chinese snuff bottles**, to include six in reverse-painted glass; three in russet-coloured hardstone; one carved pale green jade and a blue and white porcelain double gourd-shaped snuff bottle (11).
£100-200
- 592 **A pair of Chinese blue ground cloisonne vases, late 19th / early 20th century**, decorated with a pair of peacocks standing on rocky outcrop with peony and foliage, 31cm high.
£150-300
- 593 **A Chinese gilt bronze quatrefoil shaped dragon jardiniere**, decorated with two rectangular dragon panels on an archaic ground, the handles formed as two dragons, raised on four mask supports, 49cm wide x 35cm high.
£250-500
- 593A **A Tibetan or Nepalese copper and white metal casket, late 19th century**, the pierced copper ground set with eleven white metal plaques decorated with Buddhist figures, 24cm wide x 10.5cm high x 18cm deep.
£100-200
- 593B **A Chinese bronze quatrefoil shaped teapot and cover, late Qing Dynasty**, 19.5cm high.
£70-150



Antique & Fine Art Sale, 16th Apr, 2024 - 17th Apr, 2024

- 594 **A Chinese bronze model of a recumbent Kylin**, 18cm long x 10cm high.
£300-500
- 595 **A Chinese carved dark wood figure of a warrior and dragon**, late 19th/ early 20th century, the eyes and teeth with shell inlaid detail, 89cm high.
£400-600
- 596 **A pair of Chinese blue ground cloisonne pear-shaped vases**, late Qing Dynasty, each decorated with a pair of dragons contesting a flaming pearl with later addition of ormolu mounts at the rim and base, 40cm high.
£2,000-3,000
- 597 **A Chinese gold-splashed bronze double vase**, Qing Dynasty, formed as two tied vases, impressed seal marks, with fitted carved and pierced wood stand, overall size on stand 25cm high x 21.5cm wide.
£500-800
- 598 **A Japanese Imari porcelain charger**, late 19th / early 20th century, centred with a roundel enclosing a basket of flowers within a panelled border of flowers and foliage, 38cm diameter.
£70-150
- 599 **A Japanese Imari porcelain charger**, late 19th / early 20th century, centred with a shaped circular panel enclosing an urn issuing flowers and fruit within a panelled border, 34.5cm diameter.
£70-150
- 600 **A Japanese Imari porcelain charger**, late 19th / early 20th century, decorated with a circular roundel enclosing an urn issuing flowers within a panelled border, 41cm diameter.
£70-150
- 601 **A large Japanese blue and white porcelain vase**, late 19th / early 20th century, decorated with two female flautists in a garden of blossom trees, peony and chrysanthemum, signed, 55.5cm high.
£100-200
- 602 **A Japanese Satsuma pottery vase**, Meiji Period, of hexagonal form decorated with two rectangular panels enclosing figures divided by two smaller rectangular panels enclosing flowers and birds, on a richly gilded and enamelled ground, 31cm high.
£100-200
- 603 **A Japanese Imari porcelain charger**, late 19th / early 20th century, decorated with a group of figures in a fenced garden of blossom trees, peony and chrysanthemum, 39.5cm diameter.
£100-200
- 604 **A Japanese satsuma pottery miniature teapot and cover**, Meiji Period, decorated with bamboo under a richly gilded border, signed, 7cm high.
£200-300
- 605 **A pair of Japanese Kutani porcelain vases**, late 19th / early 20th century, decorated with Lohan figures, elephants and palm trees on a red ground, the shoulders each set with a pair of shishi dogs, signed, 37cm high.
£250-500
- 606 **A pair of Japanese Imari porcelain jars and covers**, late 19th / early 20th century, decorated with shaped rectangular panels enclosing chrysanthemum on a ground decorated with peony and foliage, 35cm high.
£250-500
- 607 **A Japanese Sumida Gawa pottery bowl**, late 19th / early 20th century, decorated with a purple, blue, brown and green glaze, the rim set with eight figures, 28.5cm diameter.
£250-500
- 608 **A Japanese porcelain model of an elephant**, mounted as a table lamp, with scrolling gilt metal arms supporting porcelain flower heads on a gilt metal rectangular plinth, overall 56.5cm high.
£400-600
- 609 **A pair of Japanese Imari porcelain octagonal shaped jars and covers**, Meiji Period, decorated with panels of birds and flowers on a richly gilded ground decorated with peony and foliage, the covers with finials formed as Kylin, 43cm high.
£500-800
- 610 **A Japanese satsuma pottery square-shaped koro and cover**, Meiji Period, decorated with four square-shaped panels depicting figures and pavilions, waterfall and pine trees before Mount Fuji, two Bijin and chrysanthemums, birds and butterflies, all within richly gilded borders, raised on four shaped bracket feet, the circular cover with pierced details, signed, 19cm high x 16.5cm square.
£800-1,200



Antique & Fine Art Sale, 16th Apr, 2024 - 17th Apr, 2024

- 611 **A Japanese lacquer jewellery cabinet with fine straw basket-weave finish**, with twin doors with patinated copper mounts and black lacquer interior drawers highlighted with mother-of-pearl, 27.5cm wide x 23cm high x 17cm deep.
£50-100
- 612 **A large carved wood figure of a Japanese official, 20th century**, wearing a helmet and carrying a sword, 85.5cm high.
£50-100
- 613 **Hokusai, a wood block print, Nihonbashi Bridge in Edo**, from the series "Thirty-six views of Mount Fuji", 24.5cm x 36.5cm, framed and glazed 44.5cm x 57cm.
£50-100
- 614 **A Japanese silver wire work cloisonné circular dish, 20th century**, decorated with wisteria with silver highlights and gilt borders, with signature to reverse of rim, 12cm diameter.
£80-120
- 615 **A late 19th / early 20th century Japanese bronze model of a crab**, 28.5cm wide x 9cm high.
£100-200
- 615A **A late 19th/ early 20th century bronze model of crab**, 15.5cm wide x 4.5cm high.
£50-100
- 616 **A pair of Japanese bronze bottle vases, late 19th / early 20th century**, decorated in shallow relief with koi carp, the details picked out in gilt, signed, 21cm high.
£500-800
- 617 **A late 19th / early 20th century Japanese white metal figure group of two Manchurian Cranes**, mounted on a naturalistic wooden plinth, 33.5cm high x 37cm wide.
£800-1,200