



ANTIQUES AND FINE ART

Tuesday 10th & Wednesday 11th September 2024





Lot 525

Antiques & Fine Art Sale

Two day Auction

Day One: Lots 1-305

Tuesday 10th September at 10.00am

To include; Longcase clocks, Furniture, Mirrors, Garden, Rugs & Carpets, Works of Art, Clocks, Whisky, Wine, Port & Champagne, Prints, Watercolours & Oil Paintings

Day Two: Lots 306-591

Wednesday 11th September at 10.00am

To include; Silver & Electroplate, Gold, Watches & Jewellery, Glass, British & European Ceramics, Chinese Porcelain & Works of Art, Japanese Ceramics & Works of Art, Other Asian Works of Art

At 6 King Street, Perth, PH2 8JA

Saturday 7th September 2024 9am – 2pm

Sunday 8th September 2024 1pm – 3pm

Monday 9th September 2024 9am – 5pm

Limited Viewing on the Morning of Sale

Illustrated Catalogue. **£10.00**

Buyer's Premium 22% plus VAT

Enquiries: Nick Burns
Email: mail@lindsayburns.co.uk
Website: www.lindsayburns.co.uk
Live Auction: www.the-saleroom.com/lindsayburns
Telephone: 01738 633888

Front cover Illustration – Lot 305 (detail)

Back cover Illustration – Lot 379 (detail)

CONDITIONS OF SALE FOR BUYERS

1. The highest bidder shall be the Buyer. If any dispute arises, the Auctioneers shall have absolute discretion to settle it and put up any disputed Lot again. The Auctioneers reserve the right to refuse any bidding.

2. All lots are put up for sale subject to any agreed reserve price imposed by the seller. The Auctioneers and Vendors reserve the right to bid for each Lot and to alter the Lotting as may be considered necessary, and to withdraw any Lot or Lots from the Sale.

3. The full purchase money for each Lot is to be paid at the fall of the hammer. The declaration of the name of the buyer shall be deemed a full and sufficient acceptance of the Lot, which shall then be and remain in every respect at the absolute risk of the respective buyer or buyers thereof, and shall be removed from the place of sale at the buyer's expense, and taken with all faults and errors of description, the Auctioneers not holding themselves responsible for the correctness of the description, the genuineness or authenticity of, or any fault or defect in any Lot. The Contract of Sale is to be deemed in all cases as made exclusively with the Auctioneers, and the payment is to be made to them alone.

4. No lot or lots shall be removed from the premises on which the sale is held until paid for, nor shall any person be allowed to retract his or her bidding, but must give his or her name and residence on demand. No lot under any circumstances to be removed during the hours of the sale but all Lots must be removed within five working days of the sale. No relaxation whatever can be made to this condition. Should any damage be occasioned by any buyer to any property of any Vendor which is either reserved or unsold, the buyer shall make good the same or pay a sum in damages which may be agreed between the Auctioneers, as representing the vendor, and such buyer, or failing agreement as to said damages, the amount shall be settled by the Auctioneers whose decision shall be final.

5. Methods of Payment

Cheques – All cheques must be made payable to Lindsay Burns and Company. It is necessary to allow at least five working days for the cheque to clear before collecting the lots (unless agreed with the auctioneers prior to sale).

Cash - Lindsay Burns & Company accepts cash payments up to £500

Bank transfer - All bank transfers must state the relevant invoice number (found on the top right of your invoice, if you are unsure of this number please contact the office) If transferring from a foreign currency, the total Lindsay Burns & Company receive must be the amount due in pounds sterling after a currency conversion. All transfers must include anticipated bank charges. Our bank details are printed on our invoices. We do not accept cash deposits into our bank account.

Credit card and debit card payments - There are no charges for using debit or credit cards. Lindsay Burns & Company does not accept card payments over the telephone or internet, only in person on the premises (unless agreed with the auctioneers prior to sale).

6. It is hereby expressly stipulated that all sales be cash transactions at the fall of the hammer. Notwithstanding this a bill statement may be delivered to the buyer at the end of the sale, for the convenience of such buyer, no stamped receipt shall be required by such a buyer. Except at his or her own expense.

7. If any buyer shall fail to comply with the above conditions or any of them, the Auctioneers shall be at liberty to recover in full the amount outstanding for the Lot or Lots bought by such buyer, together with a 5% administrative charge, and all costs, charges and expenses incurred; or to re-sell any Lot or Lots bought by such buyer, either by public or private sale, and the full amount of the purchase money at the present sale, or the deficiency (if any) arising from the second sale together with all interest, cost, charges and expenses, shall be made good by the defaulter.

8. Neither the Vendor nor the Auctioneers shall be responsible for any loss, damages or injury occasioned to or sustained by any person on the premises, before, during or after the sale howsoever the same may arise.

9. All Lots marked with the prefix * indicates VAT is payable in addition to the Selling Price.

10. All Lots prefixed with @ indicates that VAT is included in the Selling Price.

11. All lots prefixed with **ARR** indicate that they are subject to Artists Resale Right. This will only apply to items selling for a hammer price of £1000 or greater, converted into the currency of the sale using the European Central Bank reference rate prevailing on the date of sale. The additional premium will be payable to Lindsay Burns & Company by the buyer to cover our expenses relating to the payment of royalties under the Artists Resale Right Regulations 2006 and The Artists Resale Right (Amendment) Regulations 2011. The Royalty is calculated as a percentage of the Hammer Price and is set out on a sliding scale from 4% to 0.25%, see table below. The maximum Royalty is capped at £12,500 which applies to works sold for £2 million or more.

Hammer price	Percentage
From £0-£50,000	4%
From £50,000.01 to £200,000	3%
From £200,000.01 to £350,000	1%
From £350,000.01 to £500,000	0.5%
Exceeding £500,000	0.25%

12. Registering To Bid

To register as a private individual we will require full contact details along with government issued photo identification (passport, driving licence) and a proof of address (utility bill, council tax bill, bank statement) To register as a corporate client we will require a copy of the certificate of incorporation or equivalent documentation and proof of identification of directors and owners. If you are a partnership, trust or other legal structure please contact us to discuss the registration requirements.

Buyer's premium is charged at 22% plus VAT at the prevailing rate on the hammer price of all lots sold.

13. Lindsay Burns & Company offers an online bidding service via the-saleroom.com. This service is provided for bidders who cannot attend the sale. Online auctions allow you to listen, bid and watch the sale in real time. To view the catalogue and register for the sale please go to www.the-saleroom.com/lindsayburns. Please note that successful bids made via the-saleroom.com live auction service will be subject to an additional 4.95% charge plus VAT at the prevailing rate over and above Lindsay Burns & Company's buyer's premium.

14. Lindsay Burns & Company prepare Condition Reports and state the physical condition of the lots offered for sale. Lindsay Burns & Company do this free of charge and on behalf of our vendors. Should any potential buyer request a Condition report then Lindsay Burns & Company will provide this. Lindsay Burns & Company are not entering into a contract with the potential buyer. Whilst every effort is taken to ensure the accuracy of the Sale Catalogue and such Condition Reports, they and all descriptions given are prepared by us to the best of our knowledge and any dates and descriptions relating to lots are the Opinion of Lindsay Burns and Company. They do not assume responsibility for them in any way. All lots are available for inspection to potential buyers during the viewing period prior to the Auction.

15. Definitions

Auctioneer the representative of Lindsay Burns & Company conducting the sale.

Buyer the person to whom a lot is knocked down to by the Auctioneer and will include any bidder or potential buyer.

Buyer's Premium is the sum calculated on the Hammer Price currently 22%+VAT.

Condition Report is a report on the physical condition of a lot prepared by Lindsay Burns & Company for potential buyers (see 15).

Hammer Price is the price for which the lot is knocked down by the Auctioneer on the day of sale (not subject to Buyers Premium or VAT).

Lindsay Burns & Company The Auctioneers as referred to as Lindsay Burns & Company.

Lot any item consigned to Lindsay Burns & Company with a view to being sold at auction.

Sale the auction sale at for which a lot is to be offered for sale by Lindsay Burns & Company.

VAT Value Added Tax at the prevailing rate at the day of sale.

Vendor the seller of lots consigned to Lindsay Burns & Company.

Customer Due Diligence

Art Market Participants are obliged to undertake measures to ensure that transactions are not part of money laundering. The threshold for these checks is 10,000 EUROS or the equivalent in British pounds. We will be required to undertake the necessary identification checks prior to the conclusion of any transaction exceeding this threshold. Please refer to our Anti-Money Laundering Policy or contact the office for further information.

Lindsay Burns & Company will collect, use and store your personal data in accordance with their privacy policy. A copy of this can be provided on request or accessed at <https://lindsayburns.co.uk/privacy-policy>.

Published by Lindsay Burns & Company 1st April 2024.

Lindsay Burns & Company is the trading name of N Burns & C Burns Ltd., a limited company registered in Scotland.

Registration number SC412672. Registered office is at 6 King Street, Perth, PH2 8JA VAT Reg. 177947251

catalogue
production by **Park**

**TUESDAY 10TH SEPTEMBER
LONGCASE CLOCKS**



Lot 1

1. A George III oak longcase clock, James Mylne, Montrose, the brass dial with silvered chapter ring bearing Arabic and Roman numerals, enclosing a subsidiary seconds dial and date aperture, the twin train four pillar movement striking on a bell, within dome top hood supported by turned columns, the trunk with arched top door on a rectangular base with bracket feet, pendulum, weights and winding key present, 217.5cm high.
£150-300 (+26.4% BP*)



Lot 2

2. A George III mahogany longcase clock, James Gray, Edinburgh, the silvered dial with Arabic and Roman numerals, enclosing a subsidiary seconds dial and date aperture, the twin train four pillar movement striking on a bell, within broken swan neck hood supported by gilt metal capped Corinthian columns with fluted detail, the trunk door with boxwood lined inlay, flanked by fluted quarter columns on a rectangular base with four shaped bracket feet, pendulum, weights and winding key present, 224cm high.
£150-300 (+26.4% BP*)



Lot 3

3. A George III Irish mahogany longcase clock, William Raymon, Dublin, the 13.5" square brass dial with brass chapter ring bearing Arabic and Roman numerals, enclosing a subsidiary seconds dial and date aperture, the twin train four pillar movement striking on a bell, within plain hood with blind fretwork frieze, supported by fluted columns, the trunk with fluted quarter columns on a rectangular base, pendulum, weights and winding key present, 224.5m high.
£150-300 (+26.4% BP*)



Lot 4

4. A 19th century mahogany longcase clock, Thomson & Son, Alloa, the enamelled dial with Roman numerals, subsidiary seconds dial and subsidiary date dial, the arch decorated with a marriage scene, the spandrels decorated with figures emblematic of England, Scotland, Ireland and Wales, the twin train four pillar movement striking on a bell, contained within broken scroll hood, the trunk flanked by quarter columns, on a rectangular base with four tapered turned feet, pendulum, weights and winding key present, overall 219cm high. **£150-300** (+26.4% BP*)

FURNITURE



Lot 5

5. A late 19th/early 20th century rocking horse, with original horsehair mane and tail, leather saddle and bridle, with glass inlaid eyes, with painted details, the trestle base inscribed 'Selfridge', 127cm wide x 111cm high. **£250-500** (+26.4% BP*)

6. A 19th century mahogany velvet upholstered rocking chair, with shell and foliate carved details. **£50-100** (+26.4% BP*)

7. A 19th century mahogany sideboard, the shaped rectangular top above a central frieze drawer and blind deep drawer, flanked on both sides by cupboard doors, raised on six tapered square supports with spade feet, 167.5cm wide x 90cm high x 64.5cm deep. **£70-150** (+26.4% BP*)

8. A composite set of eight 19th century mahogany dining chairs, comprising two matching carvers and six matching side chairs, the side chairs with double horizontal splats. **£150-300** (+26.4% BP*)

9. A 19th century mahogany and brass lined corner cupboard, the top with broken architectural pediment above two cupboard doors with vertical line detail, flanked in the upper half by herm supports, raised on tapered square sectioned supports, 220cm high x 65.5cm wide. **£50-100** (+26.4% BP*)

10. An Edwardian mahogany and satinwood banded cylinder bureau bookcase, the upper section with pair of astragal glazed cupboard doors, opening to a fitted interior with three shelves, with later back board, the base with cylinder opening to a pull-out section with leather lined writing surface, pigeon holes and two shallow drawers, over three long graduated drawers raised on bracket feet, with later back board, 100cm wide x 205cm high x 52cm deep. **£70-150** (+26.4% BP*)



Lot 11

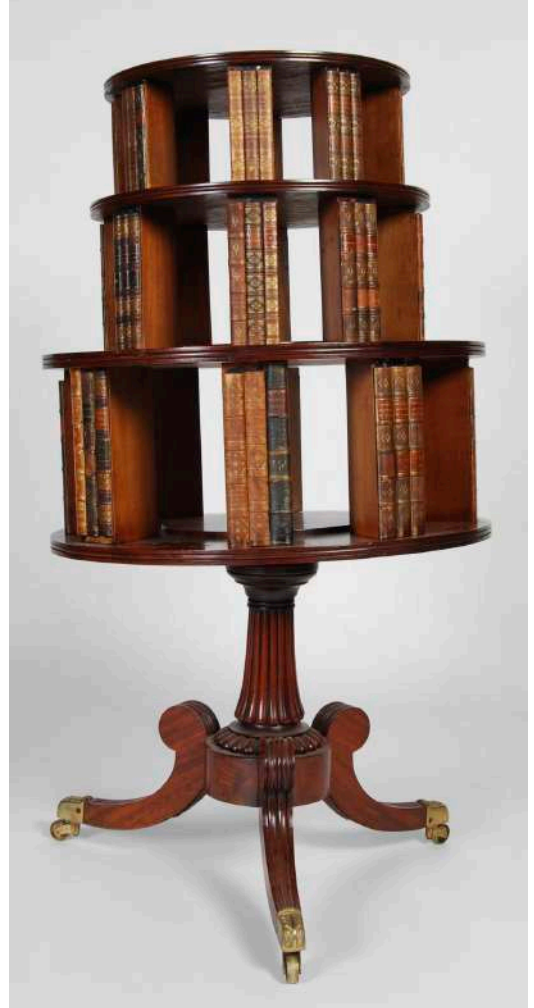
11. A 19th century teak Zanzibar chest, the hinged cover opening to a plain interior with small lidded compartment at the side, with pierced brass fretwork details and studded details, the sides with drop carry handles, raised on four loose turned cylindrical supports, 130cm wide x 70cm high x 64cm deep. **£150-300** (+26.4% BP*)

12. A pair of George III Hepplewhite style mahogany side chairs, the shield shaped backs with pierced vertical splats above velvet upholstered serpentine seats, raised on tapered square supports with fluted detail. **£50-100** (+26.4% BP*)

13. A Chinese lacquered urn stand, late 19th/early 20th century, the rectangular top decorated with lotus flowers and butterflies, raised on square section supports terminating in claw feet, united by a rectangular under-tier, 44cm wide x 69.5cm high x 33cm deep. **£100-200** (+26.4% BP*)

14. A Chinese darkwood urn stand, late Qing Dynasty, the circular top with mottled red and white marble insert above a frieze carved and pierced with blossom flowers, on four cabriole supports united by concave stretchers, 31cm diameter x 48cm high. **£100-200** (+26.4% BP*)

15. A 19th century mahogany and boxwood lined card table, the hinged rectangular top opening to a green baize lined interior, above a plain frieze with rectangular line motifs, raised on four tapered ring turned supports with brass cups and castors, 90cm wide x 76.5cm high x 44cm deep. **£70-150** (+26.4% BP*)



Lot 16

16. A 19th century and later mahogany revolving bookcase, the revolving section with three graduated shelves and faux book supports raised on a tapered cylindrical column with reeded detail, raised on three downswept supports with foliate cast brass cups and castors, diameter at top 45cm x 121.5cm high. **£2,000-3,000** (+26.4% BP*)

17. A late 19th /early 20th century French kingwood, marquetry and gilt metal mounted Louis XV style commode, the Breche D'Alep marble top above two deep drawers decorated with flowers and foliage, raised on four splayed supports with gilt metal mounts, 111cm wide x 88.5cm high x 50.5cm deep. £800-1,200 (+26.4% BP*)



Lot 17



Lot 22

18. A Victorian rosewood sofa, the back centred with oval button-down upholstered panel, supported by pierced detail of flowers and foliate scrolls, flanked by button-down upholstered ends and stuff-over seat, raised on short cabriole supports with white ceramic castors, 183cm wide. £200-300 (+26.4% BP*)

19. A late 19th/early 20th century oak settle, the triple panel back over a hinged seat, flanked by open arms with lion carved details, the panels with gothic and foliate carved details, 150cm wide x 118cm high x 52cm deep. £100-200 (+26.4% BP*)

20. A 19th century Jones's Patent japped metal trunk, 78cm wide x 25.5cm high x 43cm deep. £40-80 (+26.4% BP*)

21. A 19th century mahogany and boxwood lined bedside locker, the square top with raised gallery edge above a single cupboard door with boxwood line detail, raised on four tapered cylindrical supports, united by an X-shaped stretcher topped with a circular platform, 32.5cm square x 75cm high. £50-100 (+26.4% BP*)

22. A George III mahogany chest on chest, the moulded cornice with dentil detail above a frieze carved with scrolling foliage, over two short and three long graduated cockbeaded drawers, the base fitted with three long graduated cockbeaded drawers, all enclosed by fluted canted angles and raised on bracket feet, 123cm wide x 175.5cm high x 58cm deep. £200-400 (+26.4% BP*)

23. A late 19th century walnut armchair, in the manner of Howard & Sons, the upholstered back, arms and seat raised on tapered cylindrical supports with brass cups and castors, 77cm high. £100-200 (+26.4% BP*)



Lot 23



Lot 24

24. An early 19th century rosewood and brass inlaid combination games/work table, the rectangular top with slide-out cover revealing a leather lined backgammon board, the underside of the top inlaid with a chequer board, flanked on either side by hinged panels opening to three division compartments, with folded satin pull-out well, raised on four ring turned supports, terminating in four downswept legs with foliate cast caps resting on brass castors, 64.5cm wide x 71cm high x 36.5cm deep.

£100-200 (+26.4% BP*)

25. A late 19th/early 20th century needlework upholstered mahogany armchair, the needlework upholstered back, arms and loose cushion seat raised on four short shell carved cabriole supports, terminating in pad feet, 93cm high. **£250-500** (+26.4% BP*)



Lot 25

26. A pair of Chinese darkwood and porcelain mounted barrel seats, the circular porcelain inserts decorated with figures in a garden, raised on pierced interlaced supports and six bracket feet, 31cm diameter x 46cm high. **£300-500** (+26.4% BP*)

27. A George III mahogany chest, the rounded rectangular top with moulded edge over two short and three long graduated cockbeaded drawers raised on bracket feet, 119cm wide x 94.5cm high x 59.5cm deep. **£200-300** (+26.4% BP*)



Lot 27

28. A 19th century mahogany four division canterbury, fitted with a single frieze drawer raised on four turned supports with brass cups and castors, 46.5cm wide x 54.5cm high x 36cm deep. **£200-300** (+26.4% BP*)

29. A set of four Chinese darkwood chairs, late 19th/early 20th century, the rectangular backs each centred with a circular dream stone panel within a plain border supported by pierced foliate motifs above rectangular panelled seats, raised on four square section supports united by H-shaped stretchers, 100cm high. **£800-1,200** (+26.4% BP*)



Lot 30

30. A 19th century mahogany and brass bound octagonal-shaped wine cooler, the hinged cover opening to a lead-lined four-division interior on an integral stand with four tapered square supports with fluted detail terminating in brass cups and castors, 44cm wide x 65cm high. **£800-1,200** (+26.4% BP*)

31. A Chinese darkwood urn stand, late Qing Dynasty, the shaped square top with mottled purple and white marble insert, above a frieze carved with fruit and flowers, raised on four cabriole supports with claw and ball feet, united by concave stretchers, 53cm diameter x 48cm high. **£100-200** (+26.4% BP*)

32. A Neo-Classical style painted window seat, the ends pierced and carved with lyre shaped motif below top rails carved with urns issuing ribbon-tied floral garlands, with detachable printed cushion seat raised on four tapered square section slightly concave supports, 96cm wide x 74cm high x 35cm deep. **£100-200** (+26.4% BP*)

33. A Chinese darkwood urn stand, late Qing Dynasty, the circular top with mottled purple and white marble insert above a frieze carved and pierced with blossom flowers, raised on four cabriole supports united by an X-shaped stretcher, 27cm diameter x 90.5cm high. **£150-300** (+26.4% BP*)



Lot 34

34. A reproduction George III style mahogany twin pedestal dining table and eight upholstered dining chairs, the twin pedestal dining table raised on two tapered cylindrical columns with four downswep supports terminating in brass cups and castors, 244cm long x 132cm wide x 74cm high; the eight dining chairs with striped upholstered backs and seats with brass studded detail, raised on square section supports with line details. **£100-200** (+26.4% BP*)



Lot 35

35. Arthur Brett & Sons, a reproduction Regency style breakfront side cabinet, the black marble top above four frieze drawers and four cupboard doors, each with gilt metal grills and folded satin backing, raised on six tapered cylindrical supports, 200.5cm wide x 84cm high x 50.5cm deep. **£200-400** (+26.4% BP*)



Lot 36

36. Arthur Brett & Sons, a reproduction George III style mahogany bedside table, the square top with raised gallery edge above a single cockbeaded frieze drawer, raised on four square section supports with chamfered detail, united by an X-shaped stretcher, 42.5cm square x 74cm high. **£50-100** (+26.4% BP*)



Lot 37

37. An early 20th century mahogany Cockpen armchair, with floral upholstered concave seat and brass studded detail. **£50-100** (+26.4% BP*)

38. A Rococo style giltwood console table of small proportions, 20th century, the shaped top with moulded edge above a foliate and scroll carved frieze, raised on four foliate carved supports with scroll detail, united by a concave stretcher, 76cm wide x 74cm high x 28cm deep. **£50-100** (+26.4% BP*)



Lot 39

39. A George III mahogany serpentine chest, after a design by Thomas Chippendale, the shaped serpentine front with moulded edge above four long graduated cockbeaded drawers, each with S-shaped lock escutcheons and circular foliate cast handles, raised on splayed bracket feet, 116cm wide x 90cm high x 59cm deep. **£2,000-3,000** (+26.4% BP*)

40. A Chinese darkwood urn stand, the octagonal-shaped top with mottled red and white marble insert above a frieze carved and pierced with dragons raised on four cabriole supports, united by an X-shaped stretcher, 26cm diameter x 91cm high. **£150-300** (+26.4% BP*)

41. A Chinese darkwood urn stand of asymmetric form, late 19th/early 20th century, carved with a square panelled plinth and rectangular panelled plinth, on six cylindrical supports united by a square under-tier, all united by cross stretchers, 68cm wide x 87.5cm high x 30cm deep. **£150-300** (+26.4% BP*)

42. A 19th century rosewood pedestal card table, the hinged revolving rectangular top opening to a red baize lined interior, raised on a tapered cylindrical column with foliate carved collar, resting on a concave platform base with four gadrooned carved bun feet, concealing recessed castors, 86cm wide x 77cm high x 43cm deep. **£200-300** (+26.4% BP*)

43. An Edwardian satinwood and ebony lined bijouterie table, the hinged oval top with glass panel insert opening to a cloth lined interior with four glazed panels, raised on four tapered cabriole supports, united by an X-shaped stretcher, 61cm wide x 76cm high x 42cm deep. **£200-300** (+26.4% BP*)

44. A Chinese darkwood urn stand, late Qing Dynasty, the shaped octagonal top with mottled white and red marble insert above a frieze carved and pierced with fruit and foliage raised on four mask carved cabriole supports with claw and ball feet, united by concave stretchers, 47cm diameter x 58cm high. **£250-500** (+26.4% BP*)

45. A 19th century mahogany window seat, the upholstered arms and seat raised on four tapered cabriole supports with foliate carved detail the frieze with fluted detail centred by oval patera, 94cm wide x 64cm high x 35cm deep. **£250-500** (+26.4% BP*)

46. A 19th century reproduction mahogany centre table, the circular top with red and gilt tooled leather insert, raised on four tapered cylindrical supports resting on a concave platform base with four downswept supports terminating in brass cups and castors, 137cm diameter x 74cm high. **£100-200** (+26.4% BP*)

47. A reproduction George III style chest of drawers, fitted with six long drawers enclosed by reeded uprights, raised on bracket feet, 96cm wide x 129cm high x 48cm deep. **£50-100** (+26.4% BP*)

48. A reproduction George III style mahogany bowfront chest, the shaped top with reeded edge above four long graduated cockbeaded drawers, raised on splayed bracket feet, 61.5cm wide x 73.5cm high x 46cm deep. **£50-100** (+26.4% BP*)

49. A black and gilt lacquer coffee table in the Chinese style, 20th century, the rectangular top decorated in 18th century style with river landscape, raised on four rectangular section supports with inverted scroll foot detail, 122cm wide x 42cm high x 61cm deep. **£50-100** (+26.4% BP*)

50. A reproduction mahogany revolving circular bookcase, with two open shelves, 84cm diameter x 87cm high. **£50-100** (+26.4% BP*)



Lot 51

51. A pair of 19th century mahogany hall chairs, the upright backs with gadrooned carved tops over planked seats with oval detail, raised on concave supports with channelled line detail, 89cm high. **£300-500** (+26.4% BP*)

52. A Chinese darkwood writing table/dressing table, late 19th/early 20th century, the rectangular panelled top above two small frieze drawers flanked by two deeper drawers, raised on rectangular section supports, united by stretchers with multiple angular cross stretchers, 121cm wide x 82cm high x 66cm deep. **£400-600** (+26.4% BP*)



Lot 53

53. A 19th century mahogany sarcophagus shaped wine cooler/cellarette, the hinged cover opening to a metal lined interior, raised on a base plinth with recessed wooden castors, 76cm wide x 60cm high x 52cm deep. **£500-800** (+26.4% BP*)

54. A pair of blackamoor figural floor standing candelabra, late 19th/early 20th century, each modelled with a boy supporting an urn with nine candle branches, centred around a turned graduated column, raised on serpentine rectangular plinths with marbled detail, 211cm high. **£1,500-2,000** (+26.4% BP*)

55. A pair of Chinese darkwood and white marble topped square occasional tables/urn stands, 20th century, the square tops with mottled white marble inserts raised on square section supports each united by a cross stretcher, 38.5cm square x 43cm high. **£400-600** (+26.4% BP*)

56. A Chinese darkwood Kang table, late 19th/early 20th century, the rectangular panelled top raised on four square section supports, with incurved detail, 122cm wide x 40cm high x 50.5cm deep. **£300-500** (+26.4% BP*)



Lot 57

57. A pair of 19th century gilt wood salon side chairs, the upholstered backs and seats within scroll and foliate carved surrounds raised on four cabriole supports, 99cm high. **£400-600** (+26.4% BP*)



Lot 59

59. A 20th century kingwood marquetry and gilt metal mounted marble top Transitional style commode, the mottled red and white marble top above a blind frieze drawer and two deep drawers, inlaid with laurel wreath enclosing a cherub, raised on four tapered square cabriole supports, 94cm wide x 83cm high x 52cm deep. **£100-200** (+26.4% BP*)



Lot 58

58. A late 19th century French walnut marble top bedside locker, the rectangular top with mottled red and white marble insert above a shallow frieze drawer and cupboard door below opening to marble lined interior, raised on four foliate carved cabriole supports with scroll carved feet, 45.5cm wide x 91.5cm high x 40cm deep. **£70-150** (+26.4% BP*)



Lot 60

60. A pair of 20th century French walnut fauteuils, the velvet upholstered back, arms and loose cushion seat with brass studded details, raised on foliate carved scroll supports, 88cm high. **£150-300** (+26.4% BP*)



Lot 61

61. A 19th century French mahogany marble top secretaire chest, the mottled grey and white marble top with a reeded edge above a secrétaire drawer with blue and gilt skiver, four shallow drawers and an open recess, over three long drawers and a blind drawer at the base, raised on short moulded feet, 131cm wide x 101.5cm high x 60cm deep. **£200-400** (+26.4% BP*)



Lot 62

62. A pair of French stained beech upright armchairs, the upholstered backs and seats with brass studded detail, raised on cabriole supports with foliate carved detail, the front rails centred with shell carved detail, 113cm high. **£150-300** (+26.4% BP*)



Lot 63

63. A pair of 20th century French marble top bedside tables, each with mottled purple and yellow marble tops over two marquetry inlaid drawers, raised on tapered cabriole supports, 48cm wide x 73cm high x 31cm deep. **£100-200** (+26.4% BP*)

64. A Chinese lacquer and hardstone inlaid six-fold screen, late 19th/early 20th century, decorated on one side with procession of figures and pavilion within a border of foliate sprays, birds and lion dogs, 141.5cm high x 161cm wide. **£250-500** (+26.4% BP*)

65. A nest of three Chinese darkwood occasional tables, early 20th century, the panelled rectangular tops raised on simulated bamboo carved supports with in-curved foot detail, the largest 44cm wide x 61cm high x 31.5cm deep. **£250-500** (+26.4% BP*)



Lot 66

66. A Chinese darkwood rectangular table, late 19th/early 20th century, the panelled rectangular top above a frieze carved and pierced with interlocking scroll motifs, raised on rectangular trestle ends, 139cm wide x 98cm high x 44cm deep. **£800-1,200** (+26.4% BP*)

67. A Chinese darkwood rectangular shaped low table, the panelled top above a frieze carved and pierced with interlocking scroll motifs, raised on four square section supports, 77cm wide x 51cm high x 66cm deep. **£200-300** (+26.4% BP*)

68. A Chinese darkwood armchair, late 19th century, the top rail carved in the form of a bat above a splat carved and pierced with lotus, fruit, birds, and smaller bats, the rectangular panel seat flanked by open arms with pierced character supports, raised on square section legs united by stretchers, 99cm high x 66cm wide. **£300-500** (+26.4% BP*)

69. A Chinese darkwood urn stand, Qing Dynasty, the square top with mottled red and white marble insert above a frieze carved and pierced with fruit and foliage, raised on four foliated carved cabriole supports terminating in claw and ball feet, united by two square under-tiers, 45cm square x 81cm high. **£400-600** (+26.4% BP*)



Lot 70

70. An unusual Chinese darkwood urn stand, late Qing Dynasty, the shaped octagonal top with mottled purple and white marble insert above a frieze carved with birds, flowers and scrolls, raised on four shaped supports united by a circular undertier, 42cm diameter x 84cm high. **£400-600** (+26.4% BP*)

71. A 20th century mahogany dressing table and a walnut stool, the dressing table with inverted bowfront central drawer, flanked by two smaller drawers on either side, raised on tapered square supports, 104.5cm wide x 77cm high x 50cm deep; the oval walnut stool with needlework upholstered seat, raised on four scroll carved cabriole supports with shaped feet, 51cm wide x 43cm high x 37cm deep. **£100-200** (+26.4% BP*)



Lot 72

72. An 18th/19th century oak gateleg dining table and seven 19th century rush seated dining chairs, the gateleg table with twin drop leaves forming an oval top, raised on barley twist supports united by stretchers, raised on six tapered cylindrical feet, 142.5cm long x 73cm high x 120.5cm deep; the seven dining chairs comprising a set of six rush seated chairs, each with pierced vertical splats; together with another similar rush seated dining chair with three turned spindles forming the back. **£150-300** (+26.4% BP*)



Lot 73

73. A George III mahogany chest of drawers, the rectangular top with moulded edge above a pull-out brush slide with green and gilt leather skiver, over two short and three long graduated cockbeaded drawers, raised on bracket feet, 93.5cm wide x 84cm high x 47cm deep. **£100-200** (+26.4% BP*)



Lot 74

74. A 19th century mahogany canterbury, with four divisions and single shallow cockbeaded drawer, raised on tapered cylindrical supports, with brass cups and castors, 53.5cm wide x 56.5cm high x 35.5cm deep. **£100-200** (+26.4% BP*)



75. A Victorian mahogany extending dining table, six dining chairs and sideboard, the extending dining table with rounded rectangular top enclosing one additional leaf, raised on four tapered cylindrical supports with fluted details, brass cups and ceramic castors, 177cm long (extended) x 113.5cm wide x 72cm high; the six dining chairs with drop-in upholstered seats and scroll carved horizontal splats; together with a mahogany sideboard, the upright back with open shelf and raised gallery back centred with a shield shaped cartouche, the base fitted with three panelled cupboard doors, raised on a plinth base and ceramic castors, 151cm wide x 132cm high x 47cm deep. **£250-500** (+26.4% BP*)



Lot 75

76. A reproduction George III style twin pedestal mahogany dining table and twelve dining chairs, the table with rounded rectangular top and moulded edge, enclosing one additional leaf on twin pedestals, each with tapered cylindrical column and three downswept supports terminating with brass caps raised on castors, 268cm long x 121cm wide x 71.5cm high; the twelve dining chairs carved in the Chippendale style, with foliate details and interlaced splats, the blue upholstered serpentine seats with brass studded details, raised on square section supports with channelled line detail, united by stretchers, comprising two carvers and ten side chairs. **£500-800** (+26.4% BP*)



Lot 76



Lot 76

77. A late 19th century amboyna, marquetry and gilt metal mounted jardiniere stand and cover, the shaped rectangular top with pierced gilt metal gallery and detachable cover, inlaid with flowers, foliage and musical instruments, raised on four tapered cylindrical supports with fluted detail united by a cross stretcher with gilt metal foliate details, 72cm wide x 77cm high x 41cm deep. **£200-300** (+26.4% BP*)

78. A late 19th/early 20th century French kingwood, parquetry and gilt metal mounted side table, the rectangular top with mottled purple, white and black marble insert within a pierced three-quarter gallery, over a shallow frieze drawer with lozenge shaped parquetry detail, raised on four tapered square supports, terminating in gilt metal feet, united by a single under-tier, 65.5cm wide x 79cm high x 39.5cm deep. **£700-900** (+26.4% BP*)

79. A 19th century satinwood and ebony lined Pembroke table, the rectangular top with twin drop-leaves above a single end drawer, backed by a faux drawer, raised on four tapered square supports with brass cups and castors, 99.5cm wide (open) x 72cm high x 76cm deep. **£400-600** (+26.4% BP*)



Lot 78

80. A Chinese darkwood rectangular table, late Qing Dynasty, the panelled rectangular top above a frieze carved and pierced with fruits, foliage, and stylised masks raised on four square section supports with inverted scroll carved feet, 81cm wide x 80cm high x 46cm deep. **£800-1,200** (+26.4% BP*)



Lot 81

81. A Victorian walnut, marquetry and gilt metal mounted credenza, the shaped top above a frieze inlaid with ribbon tied spray of flowers and foliage over a central panelled cupboard door inlaid with urn issuing flowers and foliage, opening to a velvet lined interior with single shelf, flanked on both sides by glazed demi-lune cupboard doors, each fitted with two open shelves, on a plinth base with bracket feet, 168cm wide x 104cm high x 41cm deep. **£600-800** (+26.4% BP*)



Lot 84

82. A late 19th/early 20th century giltwood side chair, the upholstered rectangular back and seat raised on scroll carved supports with foliate carved feet, 109cm high. **£300-500** (+26.4% BP*)

83. A late 19th/early 20th century French gilt metal mounted marble top bedside locker, in the manner of Francois Linke, the mottled white and purple marble top with a moulded edge, above a shallow frieze drawer and tambour shutter opening to a recess with marble lined interior, over an open recess below, raised on four short supports with applied scroll and foliate cast mounts, 48cm wide x 82cm high x 42cm deep. **£500-800** (+26.4% BP*)

84. A 19th century satinwood and marquetry inlaid kidney-shaped desk, the shaped top with green leather skiver, within a ribbon tied border of acorn branches, over a central frieze drawer flanked on either side by four small graduated drawers, all inlaid with anthemion and foliate scroll detail, raised on eight tapered square supports with spade feet, 121cm wide x 75.5cm high x 55.5cm deep. **£2,000-3,000** (+26.4% BP*)



Lot 85

85. A pair of French style oak bedside tables, each with moulded serpentine rectangular top above a blind frieze drawer and open recess, raised on four scroll carved cabriole supports of slender form, with foliate and scroll details, 44cm wide x 72cm high x 30cm deep. **£100-200** (+26.4% BP*)

86. A 19th century mahogany and boxwood lined fold-over tea table, the hinged top above a blind frieze drawer, raised on four tapered square supports with brass cups and castors, 107.5cm wide x 75cm high x 47cm deep. **£100-200** (+26.4% BP*)

87. A reproduction George III style mahogany chest on chest, the upper section with moulded cornice above two short and three long graduated drawers, on a base fitted with three long graduated drawers, raised on bracket feet, 125cm wide x 172cm high x 57.5cm deep. **£100-200** (+26.4% BP*)



Lot 88

88. A Louis XVI style bergère armchair, the top rail carved with detail of twin handled urn, with green striped upholstered back, arms and loose cushion seat, raised on tapered cylindrical supports. **£100-200** (+26.4% BP*)

89. A late 19th century red boule centre table, the oval shaped top with black leather skiver, over a blind frieze drawer centred with gilt metal mask, raised on four cabriole supports with mask and scroll cast mounts, 101cm wide x 76cm high x 65.5cm deep. **£250-500** (+26.4% BP*)

90. A 19th century rosewood folio stand, with two hinged slatted sides raised on four downswept supports with scroll details resting on casters, 114.5cm high x 71cm wide. **£300-500** (+26.4% BP*)

91. A pair of mahogany and parcel gilt Empire style armchairs, one with striped fabric upholstered seat; the other upholstered in yellow leather, with rectangular backs, tapered arms, and scroll carved details raised on tapered cylindrical supports with fluted details, 90cm high. **£400-600** (+26.4% BP*)

92. A 19th century Continental mahogany and marquetry centre table, the rectangular top with shaped edge, inlaid with a rectangular panel depicting an urn issuing flowers and foliage within a parquetry border and further border of flowers and foliage, over a blind frieze drawer, raised on four spiral carved tapered cylindrical supports united by similarly spiral carved X stretchers, raised on four bun feet, 112cm wide x 76.5cm high x 74cm deep. **£400-600** (+26.4% BP*)



Lot 93

93. A late 19th century French mahogany and brass inlaid two-part bonheur de jour, the upper part with rectangular marble top enclosed by a pierced three-quarter gallery over a bevelled mirror cupboard door, opening to a fitted interior with single shelf, over a shallow drawer flanked on each side with three open shelves, the rectangular base with pull-out baize lined writing slide over a central frieze flanked by two small drawers, raised on four tapered cylindrical supports with fluted detail, 81cm wide x 131cm high x 44.5cm deep. **£500-800** (+26.4% BP*)

94. A 19th century satinwood and tulip wood demi-lune side table, the shaped top with segmented veneers above a frieze centred with circular and oval shaped veneer details, raised on four tapered square supports, 112cm wide x 73cm high x 47.5cm deep. **£500-800** (+26.4% BP*)

95. A Chinese darkwood and mother of pearl inlaid two part cupboard, early 20th century, the upper section with two rectangular panelled cupboard doors, each inlaid with mother of pearl details depicting pavilions, figures, trees and birds, opening to a fitted interior with two shelves and two drawers, on a base fitted with two frieze drawers over a carved and pierced apron centred with Bi disc, 117cm wide x 188cm high x 58cm deep. **£500-800** (+26.4% BP*)

96. A late 19th century French marble top gilt metal mounted occasional table, in the manner of Francois Linke, the rectangular marble top with serpentine edge above a frieze drawer and two open shelves, raised on four tapered cabriole supports with scroll and foliate cast mounts, 44cm wide x 88cm high x 35.5cm deep. **£500-800** (+26.4% BP*)

97. An 18th century American mahogany lowboy, the rectangular top with moulded edge and foliate carved re-entrant corners, above a shallow central frieze drawer flanked by two deeper drawers, raised on four cabriole supports terminating in pad feet, 84cm wide x 70cm high x 50cm deep. **£600-800** (+26.4% BP*)

98. A Chinese darkwood side cabinet, late 19th/early 20th century, the panelled rectangular top above two panelled cupboard doors carved relief with dragons and cloud scrolls, opening to a fitted interior with single shelf, over a lower rectangular panel carved in relief with flaming pearl and two dragons, 86.5cm wide x 96.5cm high x 46.5cm deep. **£600-900** (+26.4% BP*)



Lot 99

99. A late 19th century kingwood and gilt metal mounted bowfront open bookcase, the shaped top with hinged glazed panel opening to a display recess, over an open recess with one adjustable shelf, raised on four short tapered supports with foliate cast mounts, 93cm wide x 83.5cm high x 34.5cm deep. **£700-900** (+26.4% BP*)

100. A 19th century rosewood and brass inlaid Regency style chiffonier, the upright back with two open shelves over two shallow drawers, on a base fitted with two frieze drawers over two rectangular panelled cupboard doors opening to a fitted interior with single shelf, raised on tapered square section shaped supports, 93cm wide x 126cm high x 45cm deep. **£800-1,200** (+26.4% BP*)



Lot 101

101. A Chinese darkwood and hardstone decorated rectangular table, late 19th/early 20th century, the rectangular top above a frieze carved with archaic mask and scrolls, flanked by applied green coloured hardstone lotus flowers and scrolling foliage, raised on four mask carved cabriole supports with claw and ball feet, 160cm wide x 89cm high x 63cm deep. **£800-1,200** (+26.4% BP*)



Lot 102

102. A 19th century mahogany luggage stand, in the manner of Gillows, the rectangular top with four open slats, the upright back with channelled line detail, raised on four tapered cylindrical supports with reeded detail, 62cm wide x 84cm high x 50cm deep. **£800-1,200** (+26.4% BP*)

103. A George III mahogany and ebony lined serpentine commode, the shaped top with carved edge over two long cockbeaded drawers with gilt metal mounts and drop handles, raised on foliate carved cabriole supports, the apron centred with shell carved detail, 117cm wide x 94cm high x 62cm deep.
£3,000-5,000 (+26.4% BP*)



Lot 103



Lot 105

104. A black lacquer console table in the Chinese style, with gilt line detail, pierced scroll spandrels and rectangular section supports with inverted scroll foot detail, 107cm wide x 76cm high x 36cm deep.
£100-200 (+26.4% BP*)

105. A contemporary oak and burr wood rectangular kitchen/pantry table, the rectangular top with burr wood details, raised on four square section supports with chamfered detail, 152.5cm wide x 75cm high x 80cm deep. **£100-200** (+26.4% BP*)

106. A reproduction George III style twin pedestal dining table and composite set of eleven dining chairs, the twin pedestal dining table raised on two tapered cylindrical columns with four downswept supports terminating in brass cups and castors, enclosing two additional leaves, 356.5cm long (enclosing the two additional leaves) x 129.5cm wide x 73cm high; the eleven dining chairs comprising seven brown brushed leather chairs with brass studded details, and four burgundy coloured leather upholstered chairs with brass studded details.
£100-200 (+26.4% BP*)

107. A mahogany armchair by Whytock & Reid, Edinburgh, upholstered with signature WR fabric, with loose cushion seat and similar fringed loose seat cover, raised on tapered square supports with brass cups and castors, stamped marks to one back leg.
£250-500 (+26.4% BP*)



Lot 107

MIRRORS

108. An early 20th century mahogany dressing table mirror, the oval mirror plate within a scroll frame surmounted with urn shaped finial, resting in four scroll supports, 80cm high x 68.5cm wide. **£40-80** (+26.4% BP*)

109. An early 20th century giltwood wall mirror, enclosing a rectangular bevelled mirror plate, 97cm x 130cm. **£50-100** (+26.4% BP*)

110. An early 20th century walnut cheval mirror, the mirror plate with dome top supported on square section uprights with urn finials, 159cm high x 42cm wide. **£50-100** (+26.4% BP*)



Lot 117



Lot 120

GARDEN

111. A composite stone garden bird bath, 20th century, formed in two sections, the dished circular top with foliate border, raised on a tapered cylindrical column moulded with foliage and flowers, 53cm diameter x 68cm high. **£40-80** (+26.4% BP*)

112. A composite stone bird bath, 20th century, formed in two sections, the dished circular top supported by a cherub on stepped square plinth, 39cm diameter x 81cm high. **£40-80** (+26.4% BP*)

113. A pair of composite stone garden recumbent lions, 20th century, 41cm wide x 20cm high. **£50-100** (+26.4% BP*)

114. A composite stone garden ornamental figure, modelled as a semi-clad female holding corn sheaf, 90cm high. **£50-100** (+26.4% BP*)

115. An antique stone garden planter, of rectangular form, 58cm wide x 26cm high x 41cm deep. **£50-100** (+26.4% BP*)

116. An antique stone garden planter, of rectangular form, 50cm wide x 23cm high x 38cm deep. **£50-100** (+26.4% BP*)

117. A pair of composite stone garden lions, 20th century, 58cm high. **£100-200** (+26.4% BP*)

118. A composite stone garden bench, 20th century, formed in three sections, the rectangular top resting on two lion moulded supports, 135cm long x 38cm wide x 44cm high. **£100-200** (+26.4% BP*)

119. A group of three garden benches, comprising a two-seat garden bench, 129cm wide and a corresponding single seat garden armchair, 62cm wide; and a similar two-seat bench, 121cm wide (3). **£100-200** (+26.4% BP*)

120. A 20th century teak garden bench, after a design by Sir Edwin Lutyens, 195cm long x 106cm high. **£100-200** (+26.4% BP*)

121. A white painted cast metal garden bench and two matching armchairs, all with slatted wooden seats, the arms cast with dog's head detail raised on entwined serpent form supports, the bench 125cm wide, the armchairs 54cm wide. **£300-500** (+26.4% BP*)

RUGS & CARPETS

122. A modern Erslev red ground rug, 255cm x 177cm. £40-80 (+26.4% BP*)

123. Two contemporary decorative striped rugs, the larger 154cm x 92cm, the smaller 113cm x 85cm. £40-80 (+26.4% BP*)

124. A contemporary Persian rug, the rectangular field with geometric design worked in blue, madder, ochre, green and black coloured threads, within an ivory ground border, 145cm x 97cm. £40-80 (+26.4% BP*)

125. A Persian rug, 20th century, the rectangular madder ground centred with a row of three octagonal shaped medallions divided by two square shaped medallions, flanked on either side by stylised flowers, within an ivory ground border of repeating foliate motifs, 165cm x 121cm. £50-100 (+26.4% BP*)

126. Three contemporary decorative striped rugs, the largest 188cm x 122cm, another 151cm x 95cm, the smallest 144cm x 95cm. £50-100 (+26.4% BP*)

127. A decorative rug, 20th century, the rectangular field with striped detail within border of stylised foliate motifs, 208cm x 142cm. £50-100 (+26.4% BP*)

128. A long Persian runner, the puce ground with ivory and earth coloured scroll border, 468cm x 64cm; together with a carpet fragment forming a runner with madder ground and coloured foliate lozenges, within a partial blue ground border, 305cm x 101cm (2). £50-100 (+26.4% BP*)

129. A Persian rug, 20th century, the rectangular field centred with three octagonal shaped medallions within multiple borders of stylised foliate motifs, 205cm x 137cm. £50-100 (+26.4% BP*)

130. A Persian rug, 20th century, the rectangular madder field centred with a blue and ivory-coloured floral medallion, within an ivory coloured ground of stylised flowers and foliage, 159cm x 151cm. £50-100 (+26.4% BP*)

131. A Persian rug, 20th century, the rectangular blue ground centred with a madder ground medallion enclosing stylised flowers and foliage, surrounded by animals and flower heads in a light blue ground border of red, madder, and green flowers, 196cm x 119cm. £50-100 (+26.4% BP*)

132. A Persian rug, 20th century, the rectangular orange ground divided into three sections, each centred with a blue ground lozenge enclosing flowers, surrounded by stylised animals within an ivory ground border of foliate motifs, 196cm x 118cm. £50-100 (+26.4% BP*)



Lot 131



Lot 132

133. A Persian rug, the rectangular madder ground centred with long oval floral medallion, surrounded by flowers within a blue ground border of repeating foliate motifs, 340cm x 195cm.

£50-100 (+26.4% BP*)

134. A Persian rug, late 19th/early 20th century, the rectangular blue ground centred with three madder ground lozenge shaped medallions enclosing flowers and stylised animals within multiple borders of stylised foliate motifs, 320cm x 204cm. **£100-200** (+26.4% BP*)



Lot 134



Lot 135

135. A Persian runner, 20th century, the rectangular madder ground centred with oval foliate medallion, surrounded by urns issuing flowers and scattered foliate sprays within an ivory ground border of repeating foliate motifs, 308cm x 113cm. **£100-200** (+26.4% BP*)



Lot 136

136. A Persian rug, 20th century, the rectangular madder field centred with a row of four blue ground lozenges, within a border of stylised flower heads and serrated leaves, 245cm x 164cm. **£100-200** (+26.4% BP*)



Lot 137

137. A Persian runner, 20th century, the rectangular dark blue/black ground decorated with all-over foliate motifs, within a border of stylised flower heads and serrated leaves, 324cm x 116cm. **£100-200** (+26.4% BP*)



Lot 138

138. A Persian runner, 20th century, the rectangular madder field with all-over design of hooked boteh within ivory ground border of stylised foliate motifs, 362cm x 114cm. **£100-200** (+26.4% BP*)

139. A Persian rug, 20th century, the rectangular madder ground centred with a blue and ivory coloured floral medallion surrounded by stylised flowers and foliage, within a blue ground border of repeating foliate palmettes, 346cm x 223cm. **£150-300** (+26.4% BP*)



Lot 139

140. A long Persian runner, 20th century, the earth coloured rectangular field centred with a row of stylised flowers, within an ivory ground border of flowerheads and serrated leaves, 456cm x 81cm. **£150-300** (+26.4% BP*)



Lot 141

141. A Persian rug, 20th century, the rectangular madder ground field centred with a blue ground floral medallion, surrounded by flowers and foliage within a blue ground border of repeating foliate motifs, 314cm x 195cm. **£150-300** (+26.4% BP*)



Lot 143

143. A Persian rug, 20th century, the abrash rectangular madder field decorated with all-over design of floral hooked boteh within blue ground and ivory ground borders of stylised repeating foliate motifs, 258cm x 166cm. **£200-300** (+26.4% BP*)



Lot 142

142. A Persian rug, 20th century, the rectangular blue ground centred with a madder ground flower head surrounded by flowers and scrolling foliage, within a madder ground border of repeating foliate motifs, 391cm x 298cm. **£200-400** (+26.4% BP*)



Lot 144

144. A Persian carpet, 20th century, the rectangular madder ground centred with a large ivory ground floral medallion, surrounded by flowers and scrolling foliage, within a blue ground border of repeating foliate palmettes, 390cm x 298cm. **£200-400** (+26.4% BP*)



Lot 145

145. A Persian rug, 20th century, the rectangular madder ground centred with a large blue ground foliate medallion, surrounded by stylised flower heads and foliage, within a blue ground border of repeating foliate motifs, 415cm x 288cm. **£200-400** (+26.4% BP*)

146. A large Persian carpet, 20th century, the café au lait ground rectangular field decorated with stylised flowers and scrolling foliage, within a broad border of repeating floral palmettes worked in green, madder and ochre coloured threads, 495cm x 389cm. **£250-500** (+26.4% BP*)



Lot 146

147. A Persian Mashad carpet, 20th century, the rectangular magenta ground centred with a blue lozenge shaped medallion worked all-over with flowers and serrated foliage within a dark blue ground border of repeating floral palmettes, 408cm x 301cm. **£400-600** (+26.4% BP*)

148. A Persian Ziegler type carpet, early 20th century, the blue ground rectangular field decorated with rows of stylised flowers and foliage, worked in ochre, madder, green and brown coloured threads, within an ivory-coloured border of repeating floral palmettes, 350cm x 207cm. **£400-600** (+26.4% BP*)



Lot 148



Lot 149

149. A large Ushak carpet, the pale pink ground centred with a large hexagonal medallion enclosing stylised foliate motifs, on a ground of flowers and foliage, within multiple borders worked in blue, green and orange coloured threads, 580cm x 410cm. **£500-800** (+26.4% BP*)



Lot 150

150. A Persian carpet, 20th century, the rectangular blue ground field centred with a pale blue floral medallion surrounded by flowers and serrated leaves, within a dark blue ground border of repeating foliate palmettes, 420cm x 298cm. **£600-800** (+26.4% BP*)

151. A Persian carpet, 20th century, the rectangular madder ground centred with a blue ground floral medallion enclosing an ivory ground medallion, surrounded by flowers and scrolling foliage, within a blue ground border of repeating foliate palmettes, 405cm x 305cm. **£600-800** (+26.4% BP*)

152. A Persian carpet, 20th century, the pale blue ground field centred with a circular floral medallion, surrounded by flowers and serrated leaves within a broad ivory ground border of repeating foliate motifs, 418cm x 305cm. **£600-800** (+26.4% BP*)



Lot 151



Lot 152

WORKS OF ART



Lot 153



Lot 156



Lot 155



Lot 157

153. A taxidermy hawk, mounted on branch and circular oak plinth, 41cm high; together with a taxidermy cock pheasant, mounted on oval oak plinth, 43.5cm high (2). **£50-100** (+26.4% BP*)

154. A taxidermy white stoat, mounted on oak oval plinth, 19cm high; together with a taxidermy red squirrel, mounted on oval oak plinth, approximately 22cm high (2). **£50-100** (+26.4% BP*)

155. A taxidermy kingfisher in display case, mounted on a branch amidst flowers, 37cm high x 27cm wide x 25cm deep. **£50-100** (+26.4% BP*)

156. Three taxidermy owls, to include a tawny owl mounted on a branch and circular plinth, 60cm high; a barn owl mounted on naturalistic stump under a glass dome on ebonised plinth, with three bun feet, 46cm high; and a tawny owl chick mounted on a branch under a glass dome on circular wooden plinth with four bun feet, 37cm high (3). **£100-200** (+26.4% BP*)

157. A taxidermy display case containing two tawny owls on a branch, 98.5cm high x 78cm wide x 34cm deep. **£100-200** (+26.4% BP*)



Lot 158

158. Two similar antique Kris, probably Indonesian, both with curved single edged blade and wood scabbards, the handles each carved with a single flower on the butt, 28.5cm long and 25cm long. **£40-80** (+26.4% BP*)



Lot 159

159. Three similar antique Kris, probably Indonesian, two with double-edged wavy blades and wood scabbards, 48.5cm long and 46.5cm long; the other with slightly curved double-edged blade and wood scabbard, 45cm long. **£100-200** (+26.4% BP*)



Lot 160

160. An interesting collection of assorted shell specimens, to include clam; pinna; bailer; nautilus; voluta; murex; triton and others; together with three reference books, 'Sea Shells of the World with Values' by A. Gordon Melvin; 'Shells Pleasures and Treasures' by Roderick Cameron and 'Kingdom of the Seashell' by R. Tucker Abbott. **£100-200** (+26.4% BP*)



Lot 161

161. An interesting collection of assorted shell specimens, to include conch; cowrie; cones; harps; murex; marmoratus and others together with two reference books; 'The Living Cowries' by C.M. Burgess and 'Australian Sea Shells' by John Child. **£100-200** (+26.4% BP*)

162. A brass Corinthian column standard lamp, 139cm high. **£40-80** (+26.4% BP*)



Lot 163

163. Four assorted table lamps, to include a brass three-light fluted column table lamp and adjustable shade, 67cm high; a Bristol Blue glass and brass table lamp and shade, 75cm high; a brass fluted column table lamp, 41cm high; and a blue ceramic table lamp, 53cm high (4). **£50-100** (+26.4% BP*)



Lot 164

164. A pair of blue Chinese style porcelain vases, one mounted as a table lamp, both with foliate carved details, the table lamp 58cm high; the other 46.5cm high. £50-100 (+26.4% BP*)



Lot 165

165. A pair of English pottery table lamps and shades, probably Masons, decorated in the Chinese taste with dragons and flowers, 67cm high. £50-100 (+26.4% BP*)



Lot 166

166. A pair of decorative Chinese porcelain jars and covers mounted as table lamps, decorated with boys and palm trees, 55cm high to top of bulb holder. £50-100 (+26.4% BP*)



Lot 167

167. A pair of Chinese blue and white porcelain vases, late Qing Dynasty, mounted as table lamps, 50cm high to top of bulb holder. £100-200 (+26.4% BP*)



Lot 168

168. A pair of Renaissance style gilt wood table lamps, 20th century, overall 75cm high. £50-100 (+26.4% BP*)

169. A pair of 19th century cut glass table lustres, with incomplete cut glass drops, 21.5cm high. £40-80 (+26.4% BP*)



Lot 170

170. A pair of Rococo style ormolu two light wall sconces, both approximately 42cm high x 27cm wide; together with another similar smaller Rococo style ormolu two light wall sconce, approximately 26cm high x 19cm wide (3). £70-150 (+26.4% BP*)



Lot 171

171. A late 19th/early 20th century gilt metal and glass two-light candelabra, the tapered cylindrical column with fluted detail supporting a stylised fish with two scroll branches centred by two tier graduated drop section, fitted for electricity, overall 72.5cm high. £100-200 (+26.4% BP*)

172. A late 19th century wool work picture, depicting figures before a building, worked in coloured threads in birdseye maple frame, glazed, overall 77.5cm x 66cm. £50-100 (+26.4% BP*)



Lot 173

173. A 19th century pewter flagon dated 1844, of tapered cylindrical form with S-shaped handle and domed cover, inscribed "FREE CHURCH MAUCHLINE 1844", 30.5cm high. **£70-150** (+26.4% BP*)



Lot 175

175. Mappin & Webb, London, a gilt metal mounted leather faux crocodile skin Gladstone type handbag, 29cm wide. **£100-200** (+26.4% BP*)



Lot 174

174. A late 19th century papier maché tray, decorated with a colourful foliate spray on a black ground with gilded details, 71cm x 56cm. **£70-150** (+26.4% BP*)



Lot 176

176. A bronze figure of a bison, 20th century, unsigned, 31cm high x 45 cm wide x 19.5 cm deep. **£100-200** (+26.4% BP*)

177. A Bassett-Lowke model of the British Flotilla Leader Super Destroyer D36, the deck by the stern with maker's stamp 'A Bassett-Lowke model made in Northampton', mounted on later wooden blocks, 96cm long. **£100-200** (+26.4% BP*)



Lot 177



Lot 178

178. Josef Lorenzl (1892-1950), a gilt bronze figure of a nude dancer, on triangular shaped onyx plinth, signed in the bronze 'LORENZL', 25.5cm high. £100-200 (+26.4% BP*)

179. Josef Lorenzl (1892-1950), a gilt bronze figure of a nude dancer, on square shaped onyx plinth, signed in the bronze 'LORENZL', 34cm high. £100-200 (+26.4% BP*)

180. A late 19th century silver mounted calamander desk stand, the silver three-quarter gallery with London hallmarks for 1884, maker's mark of R. F, the stand with oval patera inlay set with two silver mounted cut glass ink bottles behind a W-shaped penholder raised on four silver bun feet, 23cm wide x 16.5cm. £150-300 (+26.4% BP*)

181. A pair of late 19th century gilt bronze four-light candelabra, the four scroll branches supported on urn shaped columns with mask terminals resting on stepped square plinths with foliate cast and pierced foot detail, later fitted for electricity, 49cm high. £200-400 (+26.4% BP*)



Lot 179



Lot 182

182. A 19th century musical sewing necessaire in the form of a square piano, the hinged cover with mirrored underside opening to a fitted interior with lift out tray fitted with mother-of-pearl and white metal sewing accessories, flanked on each side by two smaller lidded compartments, raised on four tapered cylindrical supports, 30cm wide x 17cm high x 18.5cm deep. £200-400 (+26.4% BP*)

183. A decorative stag horn candle stand, set with three plated candle sconces, 80cm long x 27cm high. £40-80 (+26.4% BP*)

184. A group of four assorted Roe Deer horn trophies, two mounted on oak shield shaped plaques, approximately 25cm x 15cm. £50-100 (+26.4% BP*)

185. Three Stag horn trophy half-skull mounts, each mounted on shield shaped board, comprising twelve point, eight point and seven point examples, the largest approximately 80cm x 80cm. £100-200 (+26.4% BP*)

186. Three Stag horn half-skull trophies, each mounted on shield shaped board, comprising one eleven point trophy, a twelve point trophy and a thirteen point trophy, approximately 80cm x 80cm.
£150-300 (+26.4% BP*)

187. A stag horn skull mount trophy, with eleven point antlers, approximately 80cm high x 83cm wide.
£40-80 (+26.4% BP*)

188. Two Stag horn half-skull trophies, both twelve points and both mounted on oak shield shaped boards, both inscribed 'Glenbanchor', one dated 2.10.58, the other 9.10.61, approximately 80cm x 80cm.
£80-120 (+26.4% BP*)



Lot 189

189. An early 20th century Stags head taxidermy, with twelve point antlers and glass eyes, mounted on oak shield bearing plaque inscribed 'Glenbanchor, 7.9.36, 16 stone 12lbs, F.J.R.C', approximately 130cm high x 80cm wide. **£200-400** (+26.4% BP*)



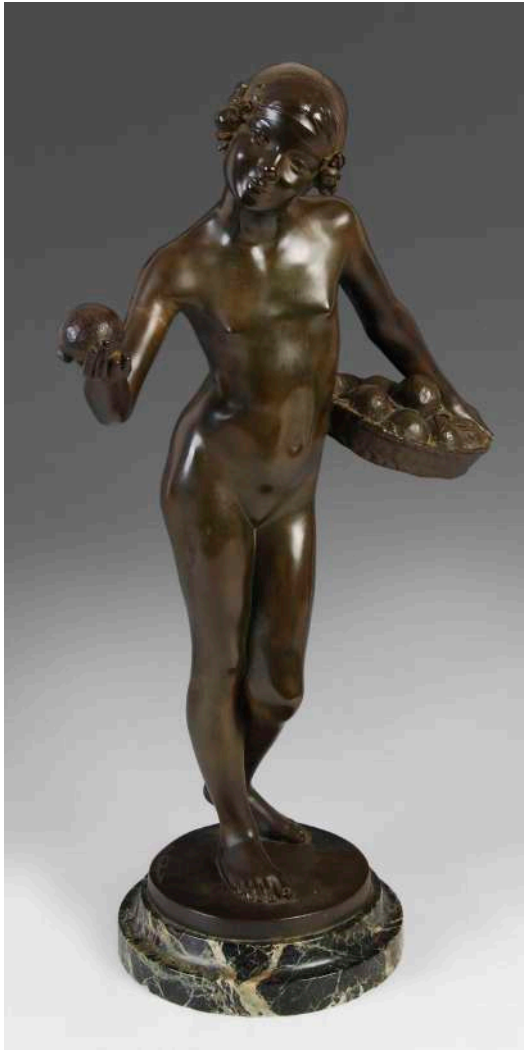
Lot 190

190. A pair of early 19th century Regency bronze and gilt bronze two-light candelabra, each modelled with chinoiserie figures holding aloft twin branch candle supports centred by a flowering branch, on mottled grey marble cylindrical plinths with chain drop detail and circular gilt metal bases, 43cm high.
£400-600 (+26.4% BP*)

191. After Moreau, a bronze figure of a female farm worker, modelled sitting and holding her dress signed in the bronze, 41cm high.
£500-800 (+26.4% BP*)

192. After Albert-Ernest Carrier-Belleuse (1824-1887), a bronze figure group of male and female signed in the bronze, 44cm high.
£700-900 (+26.4% BP*)

193. A late 19th century bronze figure group of boy and retriever, signed 'Boyes' in the bronze, on mottled white and black oval marble plinth, 33cm high x 44cm wide. **£700-900** (+26.4% BP*)



Lot 194

194. Jean Verschneider (1872-1943), a bronze figure of a nude female holding a basket of fruit, signed in the bronze and inscribed 'Etling Paris' on black and green marble plinth base, 57cm high. £800-1,200 (+26.4% BP*)

195. Paul Dubois (French, 1829-1905), "Le Chanteur Florentin", a bronze figure, signed in the bronze 'P. Dubois 1865', inscribed 'F. Barbedienne, Fondateur', with A. Collas stamp, 76cm high. £1,000-1,500 (+26.4% BP*)

196. C. Lapini, a 19th century Italian marble figure of a boy, carved standing wearing wide brimmed, open shirt and short trousers, signed on the base 'C. Lapini, Firenze, 1894', 107cm high. £2,000-3,000 (+26.4% BP*)

CLOCKS



Lot 197

197. A late 19th century gilt metal mantel clock, the black and white circular dial with Roman numerals, the twin train movement striking on a bell, within foliate and scroll cast case with oval portrait medallion surmount, 30cm high x 27cm wide. £70-150 (+26.4% BP*)



Lot 198

198. A late 19th century gilt metal and champlevé enamel three-piece clock garniture, the clock with circular Arabic numeral dial and twin train movement striking on a bell, within an architectural case, 29cm high x 20cm wide, together with a corresponding pair of twin handled urns, 19.5cm high, with later white painted plinths. £100-200 (+26.4% BP*)

199. A 19th century mahogany wall clock, POTTS & SON, LEEDS, the 12" enamel dial with Roman numerals and single fusee movement, 38cm diameter. £100-200 (+26.4% BP*)

200. A 19th century gilt bronze cased wall clock, Bagues & Fils, Paris, the black and white circular dial with Arabic numerals and single train movement within a ribbon-tied case surmounted with laurel wreath, with ribbon-tied suspension, 46cm long x 22cm wide. **£100-200** (+26.4% BP*)

201. A 19th century French green tortoiseshell boule mantel clock, the circular dial with blue and white enamel Roman numeral panels, the twin train movement striking on a bell, contained within a brass inlaid case with figural surmount, winding key and pendulum present, 49cm high. **£150-300** (+26.4% BP*)

202. A late 19th century gilt metal cased mantel clock of architectural form, the circular dial with Roman numerals, the twin train movement striking on a coiled gong within architectural case with atheneum and laurel wreath detail above a frieze decorated with gladiators, horses, and chariots resting on a gilt wood rectangular plinth base, overall 36cm high. **£200-300** (+26.4% BP*)

203. A late 19th century French Rococo style mantel clock, Balthazard, Paris, the convex circular dial with Arabic and Roman numerals, the twin train movement striking on a bell, contained within a scroll case with urn surmount issuing flowers and foliage, mounted on integral stand, 45.5cm high x 36cm wide. **£500-800** (+26.4% BP*)



Lot 199

204. A late 19th century gilt metal and champlevé enamel mantel clock, the circular dial with Roman numerals and twin train movement striking on a coiled gong within architectural dome-top case fronted with turned columns flanked by putti, the case with blue, black, red, and yellow enamel details raised on eight bun feet, 43.5cm high x 26cm wide. **£700-900** (+26.4% BP*)



Lot 201



Lot 204



Lot 205

205. A late 19th century French gilt bronze and porcelain mounted mantel clock, the circular dial with Roman numerals and painted detail of Diana and Cupid, the twin train movement striking on a bell, contained within a case with urn surmount and figure of classical female holding a torch, flanked by a quiver of arrows on either side, with garland detail and stepped breakfront plinth base, 57cm high x 39cm wide. **£700-900** (+26.4% BP*)

206. A George III mahogany and gilt metal mounted bracket clock, John Scott, Gloucester Street, London, the black and white enamel dial with Arabic and Roman numerals, with subsidiary strike/silent dial, the three train movement striking on nine bells, within caddy top case inlaid with Prince of Wales feathers and fronted with gilt metal urn shaped finials, the sides with drop carry handles and pierced gilt metal sound frets, raised on four scroll and foliate cast gilt metal feet, 57.5cm high x 37cm wide. **£3,000-5,000** (+26.4% BP*)



Lot 206

WHISKY, WINE, CHAMPAGNE & PORT

207. One bottle of Glen Moray Single Highland Malt Scotch Whisky, 12 years old, 70cl., 40% vol. £30-70 (+26.4% BP*)

208. Two bottles of vintage port, comprising; W&J Graham's, Malvedos 1984 vintage port, 20% vol., 75cl., and Porto Barros, L.B.V., 1995, 20% vol., 75cl. (2). £50-100 (+26.4% BP*)



Lot 207



Lot 208



Lot 209



Lot 210

209. Three bottles of vintage claret, comprising; two Grand Vin Chateau de Pez, Saint-Estephe, 1975, 73cl., and one Grand Cru Classe Chateau Branaire (Duluc-Ducru) Saint-Julien, 73cl., (3). £50-100 (+26.4% BP*)

210. One bottle of Taylors Vintage Port, 1963. £50-100 (+26.4% BP*)



Lot 211



Lot 213



Lot 214

211. One bottle of Fonseca's Vintage Port, 1970.
£50-100 (+26.4% BP*)

212. A mixed collection of ten assorted bottles of vintage wine, comprising; two Pommard, Bouchard Aine & Fils, 1961; two Chateaufeuf Du Pape, Paul Jaboulet Aine, 1964; one Minervois, Marcel Baron, 1986; one The Country Gentlemen's Red Burgundy, 1986; two Aloxe-Corton 1er Cru, Champy, 1992; one Saint Joseph, Chapoutier 1990; and one Cesari, Amarone 1990 Classico (10). **£100-200** (+26.4% BP*)

213. One bottle of Dom Perignon Champagne, Vintage 2006, in original presentation box, 750ml.,
12.5%. £100-200 (+26.4% BP*)

214. One bottle of Louis Roederer Cristal Champagne, 2007, 750ml., 12% vol.,
£100-200 (+26.4% BP*)



Lot 212

PRINTS



Lot 215

215. After Edwin Cockburn (1814-1873)

Whitby from the sea

coloured print

framed and glazed, overall size 43cm x 55cm

£40-80 (+26.4% BP*)



Lot 216

216. François-Nicolas Martinet (1731-1800)

Kakatoes, Tom. IV. Pl. XXI

coloured print

24cm x 29cm, framed and glazed 43cm x 47cm

£40-80 (+26.4% BP*)

217. ARR Edward Hill Lacey (1892-1967)

An actor

etching, signed in pencil lower right,

inscribed on label verso

29cm x 18cm, framed and glazed 53.5cm x 37.5cm

£40-80 (+26.4% BP*)

218. Marius Bauer (1867-1932)

Goatherds

etching, signed in pencil lower right and numbered 37 lower left

25.5cm x 20cm, framed and glazed 52.5cm x 40cm

£40-80 (+26.4% BP*)



Lot 219

219. ARR Winifred Austen (1876-1964)

Goldeneyes

etching, signed lower right

26.5cm x 21cm, framed and glazed 53cm x 41cm

together with Ronald Clark, Redheads, etching

signed lower right, 39cm x 31cm, framed and glazed

66.5cm x 52.5cm (2)

£50-100 (+26.4% BP*)

220. Kerr Eby (American, 1889-1946)

New England, Winter

etching, signed lower right and numbered 90 lower left

18.5cm x 36cm. framed and glazed 40cm x 61cm

together with Arthur William Heintzelman

(1891-1965), The Goatherd, etching, signed in pencil,

25cm x 20cm, framed and glazed 53cm x 40.5cm (2)

£50-100 (+26.4% BP*)

221. * After J F Herring Senior (19th century)
A scene in the highlands
coloured engraving, bearing 'GAMBART & CO.,
LONDON' blindstamp lower left
framed and glazed, overall size 68cm x 101cm
£50-100 (+26.4% BP*)



Lot 222

222. * After Sir Edwin Landseer RA (1802-1873)
The Forester's family
engraving, signed in pencil 'J.L. Atkinson' lower right
framed and glazed, overall size 88cm x 117cm
£50-100 (+26.4% BP*)

223. After Archibald Thorburn (1880-1935)
"Summer", Grey Partridges
coloured print, signed in pencil and bearing blind
stamp lower left
framed and glazed, overall size 51cm x 65cm
£50-100 (+26.4% BP*)



Lot 224

224. Robert Houston RSW (1891-1942) after Joseph E. Crawhall
Cockerel
printed textile, signed lower right
46.5cm x 59.5cm, framed and glazed 71cm x 83cm
£50-100 (+26.4% BP*)



Lot 225

225. Kerr Eby (American, 1889-1946)
Mevagissey
etching, signed and numbered 90
36.5cm x 37cm framed and glazed 49cm x 65cm
together with Stanley Anderson, Quai La Rochelle,
etching, signed, 21.5cm x 35cm, framed and glazed
43.5cm x 62cm; and William Douglas Macleod,
Chateau d'If, etching, signed and numbered
XLIII, 25.5cm x 39.5cm, framed and glazed
49.5cm x 67cm (3)
£70-150 (+26.4% BP*)



Lot 226

226. Arthur Briscoe (1873-1943)
Mending the trawl
etching signed lower right and numbered 41/95
lower left
18.5cm x 31cm, framed and glazed 40.5cm x 58cm
£70-150 (+26.4% BP*)



Lot 227

227. Ernest S. Lumsden (1906-1940)
Idle Craft
etching, signed and numbered 28.63
34cm x 21cm, framed and glazed 57.5cm x 40.5cm
£70-150 (+26.4% BP*)



Lot 228

228. ARR Henry Moore OM CH FBA (1898-1986)
Sculptural objects
coloured lithograph, signed in the printing
48.5cm x 75cm, framed and glazed 68cm x 94cm
£100-200 (+26.4% BP*)



Lot 229

**229. ARR Sir William MacTaggart PPRSA RA
FRSE HonRSW LLD (1903-1981)**
Roses against the night sky
coloured lithograph, artists proof, signed, and dated
'57 lower right
68.5cm x 44cm, framed and glazed 98.5cm x 73cm
£100-200 (+26.4% BP*)



Lot 231



Lot 230

230. ARR Dame Elizabeth Violet Blackadder OBE RA RSA RSW RGI DLitt (1931-2021)

Lilies

limited edition woodcut, signed lower right and numbered 24/30 lower left

64cm x 48cm, framed and glazed 94cm x 77cm

£150-300 (+26.4% BP*)

231. Dorsey Potter Tyson (American, 1891-1969)

Feast of the lantern, The snow maiden and Gossips

three coloured etchings, all signed in pencil

31.5cm x 26.5cm, 29cm x 24cm and 22cm x 25cm, all framed and glazed **£150-300** (+26.4% BP*)

WATERCOLOURS

232. F. Pearson (late 19th century)

Summer lane with shepherd driving flock
watercolour, signed lower right
19.5cm x 43cm, framed and glazed 38cm x 60cm
£40-80 (+26.4% BP*)

233. S. Craig (early 20th century)

Autumnal river landscape
watercolour, signed lower left
26.5cm x 36.5cm, framed and glazed 46cm x 55cm
£40-80 (+26.4% BP*)

234. Henry Gustave Hiller (1865-1946)

Snowcapped mountains
watercolour, signed lower left
34cm x 24cm, framed and glazed 56.5cm x 46cm
£40-80 (+26.4% BP*)

235. 19th century European School

River scene with figures and watermill
watercolour
37.5cm x 28.5cm, framed and glazed 54.5cm x 45cm
£40-80 (+26.4% BP*)



Lot 236

236. ARR Lily Stewart (20th century)

Portrait sketch of Sir William MacTaggart
pencil, signed and dated 1978 lower right,
inscribed verso
39cm x 31cm, framed and glazed 57cm x 48cm
£50-100 (+26.4% BP*)

237. Marcel Brun (early 20th century)

Young rider seated
red pastel, signed and dated 12 Juin 1904
30.5cm x 12.5cm, framed and glazed 45cm x 26cm
£50-100 (+26.4% BP*)

238. 19th century European School

Alushta, Crimea, Azkhur, Caucasus, Campanile,
Corfu, Bay of Balaclava, Crimea and Akhaltsikh,
Caucasus, five named views
watercolours, inscribed on the mount
framed and glazed, overall size 47cm x 71.5cm
£70-150 (+26.4% BP*)



Lot 239

239. Archibald Thorburn (1860-1935)

Buzzard, a field sketch
pencil, signed with initials and dated May 28 1918
lower right
13cm x 10.5cm, framed and glazed 35.5cm x 32cm
£70-150 (+26.4% BP*)



Lot 240

240. John Blair (1850-1934)

St. Abbs
watercolour, signed, inscribed, and dated 1917
lower left
24.5cm x 34.5cm, framed 42.5cm x 52.5cm
£70-150 (+26.4% BP*)



Lot 244

241. Thomas Majoribanks Hay (1862-1921)

Figure walking on a coastal road with approaching storm clouds

watercolour, signed lower right

21.5cm x 34cm, framed and glazed 41.5cm x 54cm

£70-150 (+26.4% BP*)

242. Tom Scott RSA (1854-1927)

Returning home, coastal landscape with figure, horse, cart and cottage

watercolour, signed and dated 1918 lower right

24cm x 35cm, framed and glazed 44cm x 55cm

£70-150 (+26.4% BP*)

243. ARR Robert W. Milliken (b.1920)

Mallard over the Wexford Slobs

watercolour, signed lower right

40.5cm x 56.5cm, framed and glazed 63cm x 79cm

£70-150 (+26.4% BP*)

244. Alexander Kellock Brown RSA RSW RI (1849-1922)

Harvest scene

watercolour, signed with initials lower left

16cm x 17cm, framed and glazed 38cm x 37cm

£70-150 (+26.4% BP*)

245. ARR Edwin St. John (1878-1961)

Street scene with figures and hilltop castle

watercolour, signed lower right

43cm x 31cm, framed and glazed 64cm x 51cm

£70-150 (+26.4% BP*)

246. John Blair (1850-1934)

Largo, St. Monance and Coldingham

three watercolours, all signed and inscribed lower left

26cm x 17.5cm, 17.5cm x 26cm and 17.5cm

x 26cm respectively, all framed and glazed

£100-200 (+26.4% BP*)

247. George Sheringham (1884-1937)

Kingswear from Dartmouth, No.15

watercolour, signed lower right and inscribed on label verso

19.5cm x 26.5cm, framed and glazed 44cm x 51cm

£100-200 (+26.4% BP*)



Lot 246

248. ARR Roland Green (1890-1972)

Chaffinch

watercolour, signed lower right

32.5cm x 21.5cm, framed and glazed 52cm x 39.5cm

£100-200 (+26.4% BP*)

249. William Herbert Allen (1863-1943)

Moorland scene with figure

watercolour, inscribed verso

24.5cm x 34cm, framed and glazed 41cm x 50cm

£100-200 (+26.4% BP*)



Lot 250

250. Charles Andrew Sellar (1856-1926)

Pittenweem, the Bell Rock Bar

watercolour, signed lower right

22.5cm x 34.5cm, framed and glazed 39.5cm x 52cm

£100-200 (+26.4% BP*)



Lot 251

251. Henry Wright Kerr RSA RSW (1857-1936)

Half-length Portrait of an Elderly Gentleman

wearing a top hat

watercolour, signed lower left and lower right

41.5cm x 31.5cm, framed and glazed 60cm x 50cm

£100-200 (+26.4% BP*)



Lot 252

252. ARR May Marshall Brown RSW (1887-1968)

Harbour scene with lobster boats LH200 and LH35

watercolour, signed lower right

28.5cm x 39cm, framed and glazed 53cm x 61.5cm

£100-200 (+26.4% BP*)



Lot 253

253. Finlay MacKinnon (1865-1935)

Wester Ross coastal landscape

watercolour, signed lower left

24cm x 35cm, framed and glazed 43.5cm x 54.5cm

£100-200 (+26.4% BP*)



Lot 254

254. Robert Hope RSA (1869-1936)

Portrait of a lady sitting beside a pail
watercolour, signed lower right
34cm x 24cm, framed and glazed 48.5cm x 38.5cm
£100-200 (+26.4% BP*)



Lot 257

255. 19th century Indian School

Green parakeet
watercolour
21.5cm x 34.5cm, framed and glazed 32.5cm x 45.5cm
£150-300 (+26.4% BP*)

256. ARR A. D. Bell (Wilfred Knox RBA 1884-1966)

A Surrey cornfield and A peep at the hounds
watercolours, a pair, signed and dated 1927
lower right and 1926 respectively
17cm x 24.5cm, framed and glazed 40cm x 45cm
£150-300 (+26.4% BP*)

257. Kenneth MacLeay RSA (1802-1878)

Thomas Durham Calderwood of Polton,
1838 and Anna Cunningham Graham wife of
Thomas Calderwood of Polton, a pair of portraits
watercolours, the former signed lower right and
dated 1838
25cm x 20cm and 24.5cm x 17cm respectively, both in
glazed rosewood frames
£150-300 (+26.4% BP*)

**258. ARR Sir William MacTaggart PPRSA RA
FRSE HonRSW LLD (1903-1981)**

Mountain hut in Norway

charcoal and pastel, signed lower right

19.5cm x 27cm, framed and glazed 37.5cm x 44.5cm

£200-300 (+26.4% BP*)



Lot 259

259. ARR Roland Green (1890-1972)

Pheasants taking flight

watercolour, signed lower right

43.5cm x 28cm, framed and glazed 65cm x 49cm

£200-300 (+26.4% BP*)

260. Gertrude Demain Hammond (1862-1953)

"See there, I shall own one of those ships one day"
watercolour, signed lower right, inscribed on
the mount

27cm x 18.5cm, framed and glazed 49cm x 39cm

£200-300 (+26.4% BP*)



Lot 261

261. ARR * Leonard Gray RSW (1925-2019)

Old barge can and poppies

mixed media, signed lower right

74cm x 51.5cm, framed and glazed 97.5cm x 73.5cm

£200-400 (+26.4% BP*)



Lot 262

262. John Terris RI RSW (1865-1914)

Harbour scene with fishing boats and figures on
the quayside

watercolour, signed lower left

50cm x 75cm, framed and glazed 75cm x 100cm

£200-400 (+26.4% BP*)



Lot 263

**263. * Charles Edward Britton
(British, 1870-1949)**

Evening on the Laggan Hills, Inverness Shire
watercolour, signed lower left and inscribed on
label verso

64cm x 100cm, framed and glazed 93cm x 129cm

£250-500 (+26.4% BP*)

**264. ARR James McIntosh Patrick RSA ROI ARE
LLD (1907-1998)**

At Dron, Carse of Gowrie, 1990
watercolour, signed lower left, inscribed on
label verso

38.5cm x 57.5cm, framed and glazed 64.5cm x

85.5cm **£400-600** (+26.4% BP*)

**265. Sir William McTaggart RSA RSW
(1835-1910)**

Study of two girls
charcoal, signed lower right

85cm x 55cm, framed and glazed 102.5cm x 72.5cm

£800-1,200 (+26.4% BP*)w



Lot 265



Lot 264

OIL PAINTINGS



Lot 266

266. 19th century European School

Mountain landscape with lake, buildings and farmer walking with calf and dog

oil on canvas, indistinctly signed and dated lower right
43.5cm x 59cm, framed 51.5cm x 67cm

£70-150 (+26.4% BP*)



Lot 267

267. F. E. Jamieson (1895-1950)

Highland loch scene with cottage
oil on canvas, signed lower right

38.5cm x 59cm, framed 52cm x 72cm

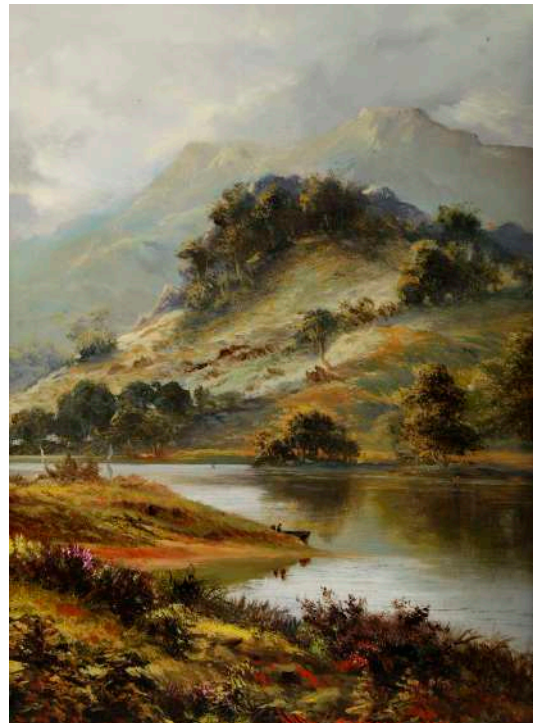
£70-150 (+26.4% BP*)

268. A. Graham (late 19th/early 20th century)

Sheep grazing and Highland loch scene, a pair
oils on board, both signed and dated 1891

29.5cm x 22cm, framed 41cm x 33.5cm

£70-150 (+26.4% BP*)



Lot 268

269. ARR Robert (Bob) William Batchelor (b.1928)

Interior scene

oil on canvas, signed and dated 1957 verso
39.5cm x 49.5cm, framed and glazed 53cm x 63cm

£100-200 (+26.4% BP*)



Lot 270

270. Peter Wishart ARSA (1846-1932)

Summer Afternoon

oil on board, signed and dated '73 lower left,
inscribed verso

17.5cm x 26cm, framed 32.5cm x 41cm

£100-200 (+26.4% BP*)

271. * 19th century British School

Sunset river landscape

oil on canvas, indistinctly signed and dated lower right
60.5cm x 91cm, unframed

£100-200 (+26.4% BP*)



Lot 272

272. Magdeleine Hue (1882-1943)

Port scene with shipping

oil on canvas, inscribed on stretcher verso
52.5cm x 78.5cm, framed 67.5cm x 94cm

£100-200 (+26.4% BP*)



Lot 273

273. ARR John Michael Saville (1922-2010)

Luberon Hills, Provence

oil on board, inscribed verso

49.5cm x 59.5cm, framed 67cm x 77.5cm

£100-200 (+26.4% BP*)



Lot 274

274. ARR John Michael Saville (1922-2010)

Landscape in Provence

oil on board, signed lower left

49.5cm x 59.5cm, framed 69.5cm x 80cm

£100-200 (+26.4% BP*)

275. 20th century French School

Beach scene with figures

oil on canvas, indistinctly signed lower left
34.5cm x 44.5cm, framed 52.5cm x 62.5cm

£100-200 (+26.4% BP*)



Lot 276

276. 19th century British School

A pastoral scene with huntsmen, hounds, and fox
oil on panel

12cm x 17.5cm, framed 22.5cm x 27.5cm

£100-200 (+26.4% BP*)



Lot 278

278. Thomas Faed RA HRSA (1826-1900)

Portrait of a lady with lace collar
oil on circular panel, inscribed on the slip
12cm circular, framed 27cm square

£100-200 (+26.4% BP*)



Lot 277

277. David Foggie RSA RWS (1878-1948)

St. Monans Kirk

oil on board, signed and dated lower right

29cm x 39cm, framed 42.5cm x 53cm

£100-200 (+26.4% BP*)



Lot 279

279. ARR William Henry David Birch ROI (1895-1968)

A Hill Farm, No1

oil on canvas, signed lower right and inscribed verso
59.5cm x 79.5cm, framed 77cm x 98cm

£150-300 (+26.4% BP*)



Lot 280

280. Nan C. Livingston (c.1876-1952)
Harvest Time and Gathering Wood, a pair
oils on board, both signed lower right
26cm x 36cm, both framed 36cm x 46cm
£150-300 (+26.4% BP*)



Lot 281

281. Philip Henry Rideout (1860-1920)
Over the brook
oil on canvas, signed lower left
49cm x 74cm, framed 61cm x 86cm
£150-300 (+26.4% BP*)



Lot 282

282. 19th century Scottish School
A view of Edinburgh Castle with troops on the
parade ground
oil on canvas, indistinctly signed lower left
48cm x 58cm, framed 65cm x 75cm
£150-300 (+26.4% BP*)



Lot 283

283. 19th century Scottish School
Bagpiper and children dancing
oil on canvas
37cm x 45cm, framed 49cm x 56cm
£150-300 (+26.4% BP*)



Lot 284

284. 19th century European School
 Venus and Cupid
 reverse painting on oval convex glass
 64cm x 53cm, framed 80cm x 70cm
£150-300 (+26.4% BP*)



Lot 285

285. 19th century British School
 Half-length portrait of Captain Charles Beecroft R.N.
 oil on canvas
 61cm x 48cm, framed 96cm x 83cm
£200-400 (+26.4% BP*)



Lot 286

286. ARR Samuel John Lamorna Birch RA, RWS (1869-1955)
 On the Upper Spey
 oil on board, inscribed on label verso
 17cm x 30cm, framed 38.5cm x 51.5cm
£200-300 (+26.4% BP*)



Lot 287

287. Percy Robert Craft RBA (1856-1934)
 The Pont Valentre, Cahors, France
 oil, signed lower right and inscribed on label verso
 22.5cm x 31.5cm, framed and glazed 41cm x 51cm
£200-300 (+26.4% BP*)



Lot 288

288. James Whitelaw Hamilton RSA RSW (1860-1932)
 The Lune Valley
 oil on panel, signed lower left, inscribed verso
 26cm x 33.5cm, framed 43.5cm x 51cm
£250-400 (+26.4% BP*)



Lot 289

289. James Whitelaw Hamilton RSA RSW (1860-1932)
 Summer pasture with sheep grazing
 oil on board, signed lower left
 26cm x 33.5cm, framed 43.5cm x 51cm
£250-400 (+26.4% BP*)



Lot 290

290. ARR William Miller Frazer RSA (1864-1961)
 Landscape with haystack, Littleport Cambridge
 oil on board, signed lower left and inscribed on label verso
 23.5cm x 33.5cm, framed 31cm x 41cm
£250-500 (+26.4% BP*)



Lot 291

291. Hope K. Ritchie (fl.1920-1939)
 Still life with marigolds in a blue and white jar
 oil on panel, signed lower right
 44cm x 36cm, framed and glazed 67cm x 59cm
£250-400 (+26.4% BP*)



Lot 292

292. John Graham-Gilbert RSA (1794-1866)
Half-length portrait of Fanny Alison Wakefield
nee MacArthur
oil on panel
37cm x 30.5cm, framed 67.5cm x 61.5cm
£250-400 (+26.4% BP*)



Lot 293

293. George Ogilvy Reid RSA (1851-1928)
Interior scene with two gentlemen
oil on canvas, signed lower right
29.5cm x 39.5cm, framed 53.5cm x 63.5cm
£300-500 (+26.4% BP*)



Lot 294

294. Thomas Creswick RA (1811-1869)
A Welsh Stream
oil on canvas
59cm x 86cm, framed 73.5cm x 100.5cm wide
£300-500 (+26.4% BP*)



Lot 295

295. * Attributed to Sir Herbert James Gunn (1893-1964)
Balmoral Castle, Royal Deeside, Aberdeenshire
oil on canvas
75cm square, framed 95cm square
£300-500 (+26.4% BP*)



Lot 296

296. * Attributed to Alexander Nasmyth (1758-1840)

Alva House, Stirlingshire
oil on canvas, inscribed verso
57cm x 92cm, framed 77cm x 112cm
£400-600 (+26.4% BP*)



Lot 297

297. Frederick Jackson (19th century)

Short Journey Home
oil on canvas
73.5cm x 119.5cm, framed 92cm x 138cm
£400-600 (+26.4% BP*)



Lot 298

298. ARR Alan B. Hayman (b.1947)

The Pursuit
oil on board, signed and dated '91 lower left
121cm square, framed 136cm square
£400-600 (+26.4% BP*)



Lot 299

299. After Sir Peter Lely, probably 19th century

Mary II when Princess depicted as Diana
oil on canvas
65.5cm x 50.5cm, framed 82.5cm x 67.5cm
£400-600 (+26.4% BP*)



Lot 300

300. Thomas Hunt ARSA VPRSW (1854-1929)

"Of the boats"
oil on canvas, signed lower right, inscribed verso
39.5cm x 59.5cm, framed 54.5cm x 74.5cm
£400-600 (+26.4% BP*)



Lot 301

**301. ARR Sir William MacTaggart PPRSA RA
FRSE HonRSW LLD (1903-1981)**

Vase of flowers

oil on board, signed and dated probably '78 lower left
27cm x 20cm, framed 45.5cm x 38.5cm

£500-800 (+26.4% BP*)

302. Charles Thornley (1852-1902)

Coastal scene with boats on choppy sea, and another,
a pair

oils on canvas, both signed lower left
34cm x 29cm, framed 50.5cm x 45.5cm

£600-800 (+26.4% BP*)

303. 19th century British School

Half-length portrait of a lady seated at a writing table
oil on canvas

40cm x 31cm, framed and glazed 66cm x 59cm

£800-1,200 (+26.4% BP*)



Lot 302



Lot 303



**304. ARR Bernard Jean
Corneille Pothast (1882-1966)**
Helping mother
oil on canvas, signed lower right
31cm x 39cm, framed
50cm x 58.5cm
£800-1,200 (+26.4% BP*)

**305. Edward Atkinson Hornel
(1864-1933)**
Two girls gathering flowers,
Brighthouse Bay
oil on canvas, signed and dated
1929 lower right
62cm x 74cm, framed
77cm x 89cm
£8,000-12,000 (+26.4% BP*)

Lot 304



Lot 305

WEDNESDAY 11TH SEPTEMBER

SILVER

306. An 18th century Scottish provincial silver teaspoon, Elgin, fiddle pattern, struck 'J, P, ELN, RS', 14cm long. £20-50 (+26.4% BP*)

307. A George III silver pap boat, London, date letter rubbed, makers mark of SM, 11cm long, 1.8 troy oz. £30-70 (+26.4% BP*)

308. A set of five Victorian silver teaspoons, Glasgow, 1847, makers mark of JMJr., fiddle pattern, engraved with initials, 2.9 troy oz. £40-80 (+26.4% BP*)

309. A rare set of six George III silver gilt salt/mustard spoons, Edinburgh, 1807, makers mark of AE probably that of Alexander Edmonstoun III, Old English pattern, together with three other similar spoons, gross weight 2.8 troy oz (9). £40-80 (+26.4% BP*)

310. A collection of 19th century electroplated wares, to include a fiddle pattern soup ladle engraved with initial 'N'; a twin-handled rectangular warming dish and an assortment of part fish and part fruit knives and forks. £50-100 (+26.4% BP*)

311. A set of six Victorian Scottish provincial silver teaspoons, Aberdeen, with Edinburgh marks for 1856, struck GS, ABD, fiddle pattern, engraved with initial, 3.7 troy oz. £50-100 (+26.4% BP*)

312. A group of 18th century and later silver flatware, comprising, a fiddle pattern sauce ladle, Exeter, 1856, maker JW&JW, engraved with initials 'AK'; three 18th century dessert spoons with elongated stems, engraved with initial 'G', and six other assorted teaspoons, gross weight 5.5 troy oz (10). £50-100 (+26.4% BP*)

313. A large collection of assorted Royal Mint commemorative coins, specimen coin sets, crowns, etc. £50-100 (+26.4% BP*)

314. A set of seven 19th century Scottish silver teaspoons, makers mark of JMc., Kings Pattern, 5 troy oz. £50-100 (+26.4% BP*)



Lot 315

315. Two George III silver meat skewers, Edinburgh, 1802, makers mark indistinct, of tapered hexagonal form, one 30cm long, the other 26.5cm, gross weight 4 troy oz. £50-100 (+26.4% BP*)

316. A set of four George III silver salts, marked rubbed, each with shaped rim, raised on three short concave supports, 6cm diameter x 3.5cm high, gross weight 5.7 troy oz. £50-100 (+26.4% BP*)



Lot 317

317. A William III silver trefid end spoon, London, 1698, makers mark of SV for John Sutton, the reverse of the terminal with pounced initials 'NH', 20.1cm long; together with a George III silver marrow scoop, London, 1789, makers mark of WE, 21cm long, gross weight 3.2 troy oz. £50-100 (+26.4% BP*)

318. A set of five George IV silver dessert spoons, London, 1827, makers mark of JH, Old English pattern engraved with initial 'B', 5.7 troy oz. £50-100 (+26.4% BP*)

319. An unusual Victorian silver cigarette case, London, 1879, makers mark of W.W over F.D for Wright & Davies (William Thomas Wright & Frederick Davies), the double split cover opening with a push button, inscribed on the base 'SCHAFFER MAKER 46 CORNHILL', 8cm x 6cm, 2.5 troy oz. £50-100 (+26.4% BP*)



Lot 320

320. A late 19th century Burmese silver bowl, with embossed decoration of figures, 11cm diameter x 6.3cm high, 5.4 troy oz. £50-100 (+26.4% BP*)

321. A late 19th/early 20th century Burmese silver and niello cylindrical box and cover, decorated with figures and scrolls, 8.5cm high x 7cm diameter, 5.2 troy oz; together with a white metal model of a cricket, 7.5cm long x 3.5cm high (2). £50-100 (+26.4% BP*)

322. An early 20th century Georg Jensen silver christening mug, with import marks and maker GS, with hammered finish and beaded border at the rim, the handle with two flower terminals, engraved, stamped marks, 9cm high, 4.5 troy oz. £50-100 (+26.4% BP*)

323. An Edwardian silver mounted glass inkwell, Birmingham, 1909, makers mark of HM, square shaped, the base with diamond cut details, 10cm square x 10cm high. £50-100 (+26.4% BP*)

324. A collection of silver, to include five assorted napkin rings; a pair of square shaped ashtrays and a cup holder, gross weight 5.6 troy oz (8). £50-100 (+26.4% BP*)

325. A set of three George V silver goblets, London, 1921, 1923 and 1925, makers mark of H.H.P., each engraved, 10.5cm high, gross weight 8.3 troy oz. £70-150 (+26.4% BP*)

326. A George V silver champagne cup, Birmingham, 1923, makers mark of D&F, 13.7cm high, 5.8 troy oz. £70-150 (+26.4% BP*)



Lot 327

327. An Edwardian Continental silver two-part shaker/mixing cup and cover, import marks for London, 1901, makers mark of ETB for Edwin Thompson Bryant, barrel shaped with embossed decoration of fruiting vine, the bottoms with embossed faux armorials, 13.5cm high, 5.3 troy oz. £70-150 (+26.4% BP*)



Lot 328

328. A set of three George II Irish silver table spoons, Dublin, 1736, makers mark indistinct, Old English pattern with engraved armorial to the reverse of the terminals, 7.2 troy oz. £70-150 (+26.4% BP*)

329. A George III silver salver, London, 1782, makers mark of JT for John Tuite, with shell and scalloped edge, raised on three short feet, engraved with armorial crest, 15cm diameter, 7 troy oz. £70-150 (+26.4% BP*)

330. A cased set of six Edwardian silver porringer shaped salts, London, 1905, makers mark of Goldsmiths & Silversmiths Company, 7.5cm wide x 2.8cm high, gross weight 6.9 troy oz. £70-150 (+26.4% BP*)

331. A pair of George III silver gilt salts, Edinburgh, 1817, makers mark of JMc., with three lion mask terminals and paw feet, 8cm diameter x 3.7cm high; together with two other smaller silver gilt salts, marks rubbed, gross weight 8.9 troy oz (4). £70-150 (+26.4% BP*)

332. A set of six George III silver dessert spoons, Edinburgh, 1798, makers mark of AE probably that of Alexander Edmonstoun II, Old English pattern with pointed end, engraved with armorial crest 'ESSAYEZ', gross weight 5.1 troy oz. £70-150 (+26.4% BP*)

333. A set of six George III silver dessert forks, Edinburgh, 1819 and 1820, makers mark of JMc., fiddle and shell pattern, engraved with the initial 'D' to the reverse, gross weight 7.7 troy oz. £70-150 (+26.4% BP*)

334. A pair of Victorian silver serving spoons, London, 1840, makers mark of MC over GA for Mary Chawner & George W Adams, fiddle pattern engraved with initials 'DD', 7.7 troy oz. £70-150 (+26.4% BP*)



Lot 335

335. A George III Irish silver seven-pronged serving fork, Dublin, 1786, makers mark of I.D for John Dalrymple, Old English with pointed end, with bright cut decoration, 34.5cm long, 5 troy oz. £70-150 (+26.4% BP*)



Lot 336

336. An Irish George III silver soup ladle, Dublin, 1780, makers mark of MS, Old English pattern with pointed end and shell shaped bowl, with bright cut decoration and armorial crest 'ESSAYEZ', 35.5cm long, 5.6 troy oz. £70-150 (+26.4% BP*)

337. Eight case sets of proof coins, to include two West Minster Baroness Thatcher 2 oz silver Numisproof coins; Jubilee Mint Queen Elizabeth II photographic five pound four coin collection; Jubilee Mint Original Silver Sixpence; Royal Mint 1995 WWII silver proof Piedfort two pound coin; Royal Mint 50th Anniversary of the Death of Sir Winston Churchill 2015 five pound silver proof coin; Royal Mint Countdown to London 2012 2010 silver proof five pound coin; and a Beijing 2008 Fuwa's Blessing silver plated commemorative medallion (8). £70-150 (+26.4% BP*)

338. A collection of silver, to include a Victorian christening mug, Birmingham, 1863, maker HA, 7cm high; an Edwardian silver matchbox holder, Birmingham, 1904, maker WHW, 7.5cm wide; an Edwardian silver calling card case, Birmingham, 1908, maker MW&Co., 8.5cm high; a Victorian silver note case, Birmingham, 1898, maker CTB, 9.5cm long; and an Edwardian silver two part circular dressing table mirror with convex mirror plate, London, 1907, makers mark of HP&S, 12.5cm diameter (5). £100-200 (+26.4% BP*)



Lot 339

339. A pair of Edwardian silver Neoclassical style candlesticks, Sheffield, 1904, makers mark of T.A.S. for Thomas A. Scott, with detachable drip pans, both engraved 'April 25th 1906', loaded, 30.5cm high and 29.5cm high. £100-200 (+26.4% BP*)

340. A George V silver cream jug, Edinburgh, 1924, makers mark of Hamilton & Inches, engraved, 8cm high; together with other silver cream jugs, 8.5cm high and 5cm high, gross weight 9.5 troy oz (3). £100-200 (+26.4% BP*)



Lot 341



Lot 347



Lot 343

341. A set of four George IV silver table spoons, London, 1827, makers mark of JH, Old English pattern engraved with initial 'B', 9.6 troy oz. £120-180 (+26.4% BP*)

342. A George IV silver quaich, Glasgow, 1822, makers mark of PG for Philip Grierson, the lugs decorated in shallow relief with thistles, 11.5cm wide x 3cm high, 1.8 troy oz; together with a Victorian silver bowl, London, 1900, maker GJ over DF, 9.5cm diameter x 7cm high, 4.2 troy oz; and a George V silver miniature Monteith bowl, London, 1914, maker H.H.P., 8.5cm diameter x 6cm high, 3.5 troy oz, overall gross weight 9.5 troy oz (3). £120-180 (+26.4% BP*)

343. A George III Irish silver cream jug and sugar bowl, Dublin, no date letter, makers mark of SW, the cream jug with embossed decoration of fruit, foliage and scrolls, raised on three mask and scroll supports with shell shaped feet, 11cm high; the sugar bowl with embossed decoration of dog, birds, flowers and scrolls, raised on three paw feet with lion mask terminals, 12.5cm diameter x 6.5cm high, 11.6 troy oz (2). £120-180 (+26.4% BP*)

344. A collection of silver flatware, various dates and makers, to include; a fiddle pattern sauce ladle, marked London, 1826, maker CE; six fiddle pattern teaspoons engraved 'H'; six fiddle pattern teaspoons engraved 'S'; and two other odd teaspoons, gross weight 10.6 troy oz (15). £120-180 (+26.4% BP*)

345. A composite set of seven silver dessert forks, four marked London, 1845, makers mark of GA, fiddle pattern with engraved armorial crest; one fiddle pattern, London, 1820, maker RB, engraved with armorial crest, and two London, 1840, maker WE, Old English pattern engraved with initials, gross weight 10.7 troy oz. £120-180 (+26.4% BP*)

346. A collection of Georgian silver flatware, to include a George III fish slice, London, 1812, makers marks of WK over SK, fiddle pattern, 29cm long; a pair of fish knives, London, 1840, makers mark of WE, fiddle pattern, engraved with armorial; one fish knife, London, 1820, makers mark of PS; a George III sauce ladle, London, 1797; and a George IV sauce ladle, Edinburgh, 1825, gross weight 12.9 troy oz (6). £150-250 (+26.4% BP*)

347. A 19th century white metal mounted horn dress powder flask, the mounts embossed with thistles, set with three pink and orange facet cut coloured stones, 32.5cm long. £150-250 (+26.4% BP*)

348. A set of ten Victorian silver teaspoons, Edinburgh, 1855, makers mark of J&WM, Old English pattern engraved with armorial crest and initial 'N', together with six matching dessert spoons, marks rubbed, gross weight 13.2 troy oz (16). £150-250 (+26.4% BP*)

349. A set of eleven George III silver dessert spoons, London, 1799, makers mark of WE over WF, Old English pattern engraved with initials 'DD', gross weight 12 troy oz. £150-250 (+26.4% BP*)



Lot 350

350. A George V Irish silver dish ring, Dublin, 1913, makers mark of LAC for Crichton Brothers (Lionel Alfred Crichton), with pierced decoration of windmill, millhouse, birds, seated figure of a farmer, flowers, foliage and scrolls, the cartouche engraved, 17.5cm diameter, 10.2 troy oz. £150-250 (+26.4% BP*)

351. A George V silver dish, Sheffield, 1910, makers mark of Walker & Hall, with pierced rim, raised on three scroll supports with paw feet, 21cm diameter x 6.5cm high, 11.7 troy oz. £150-250 (+26.4% BP*)



Lot 352

352. A Victorian silver two handled bowl, London, 1897, makers mark of RS over WS for R & W Sorley, with spiral gadrooned detail, with herm handles, 26cm wide x 7.5cm high, 10.7 troy oz. £150-250 (+26.4% BP*)



Lot 353

353. A Victorian silver mounted glass claret jug, London, 1881, makers mark of W.L, the hinged cover engraved with coronet and letter 'A', the glass body of spiral form, 30.5cm high. £150-300 (+26.4% BP*)

354. A George V silver salver, Birmingham, 1932, makers mark of B.B.S.Ld., with scalloped edge and three short scroll feet, engraved with initials 'KR', 21cm diameter, 11.5 troy oz. £150-250 (+26.4% BP*)

355. A collection of three Victorian silver christening mugs, to include, a mug, Sheffield, 1854, maker MH&Co., pear-shaped with foliate and scroll decoration, 10cm high; a mug, London, 1847, maker JA&GA, of waisted cylindrical form engraved with scrolls, 9cm high; and a mug, London, 1880, maker HWC, of cylindrical form embossed with band of flowers and foliage, 8.5cm high, gross weight 16.5 troy oz (3). £200-300 (+26.4% BP*)



Lot 356

356. A Victorian silver three light Corinthian column candelabra, Sheffield, 1894, makers mark of TS&S, the detachable three light branch section with removable centre section and detachable drip pans, loaded, 48cm high. £200-400 (+26.4% BP*)



Lot 357

357. A pair of George III silver candlesticks, Sheffield, 1801, makers mark of NS&Co., for Nathaniel Smith & Co, the stems engraved with initial 'D', with detachable drip pans, loaded, 31.5cm high. £200-300 (+26.4% BP*)



Lot 358

358. A group of 19th century silver teaspoons, comprising, twelve fiddle and shell pattern spoons; nine Kings pattern spoons and nine Old English with shell detail spoons, various makers and dates, gross weight 21.4 troy oz (30). £200-400 (+26.4% BP*)

359. A collection of 19th century silver part fruit sets, comprising, a part set of nine fruit forks and eight knives with silver tines and blades, London, 1842/43, makers mark of GA; together with a part set of four fruit forks and five knives with silver tines and blades, various marks, gross weight 50.2 troy oz. £200-300 (+26.4% BP*)



Lot 360

360. A cased limited edition set of silver and enamel commemorative spoons 'The Queen's Beasts Collection', Birmingham, 1977, makers mark of Toye, Kenning & Spencer, comprising ten spoons, with original paperwork, set no. 1223 of 2500, gross weight 15.5 troy oz. £200-300 (+26.4% BP*)



Lot 361

361. Three Victorian silver christening mugs, to include; a mug decorated with horizontal fruiting branch marked, London, 1837, makers mark rubbed, 10.7cm high; a tapered cylindrical mug with engraved decoration marked, London, 1850, makers mark of EJ&WB, 10.5cm high; and a swollen cylindrical mug marked, London, 1883, makers mark of HJL over JW, 10cm high, all engraved, gross weight 15.7 troy oz (3). **£200-300** (+26.4% BP*)



Lot 362

362. A Victorian silver teapot, Newcastle, 1854, makers mark of I.W, with engraved foliate details, the hinged cover with closed bud finial, raised on four scroll feet, 21cm high, gross weight 23.1 troy oz. **£250-400** (+26.4% BP*)

363. A George III silver hot water pot, London, 1810, makers mark of RE over EB for Rebecca Emes & Edward Barnard I, engraved with armorial crest 'ESSAYEZ', with wooden handle, 21cm high, gross weight 22 troy oz. **£250-400** (+26.4% BP*)



Lot 363



Lot 364

364. A Victorian silver chocolate pot, stand and burner, London, 1837, makers mark of EEJWB, engraved with armorial crest 'ESSAYEZ', with turned wooden handle, overall 19cm high, gross weight 18.6 troy oz. **£250-400** (+26.4% BP*)



Lot 365

365. A collection of silver, to include sugar caster, 17cm high; two handled cup, 7cm high; frilled rim pedestal bonbon dish, 7cm high; pierced oval dish, 17cm wide; circular coaster, 9.5cm diameter and three small bowls of various size, gross weight 22.9 troy oz (8). **£250-400** (+26.4% BP*)

366. A George VI silver salver, Sheffield, 1945, makers mark of **GH**, with scalloped edge and four short scroll feet, 25.5cm diameter, 19.1 troy oz. **£250-400** (+26.4% BP*)

367. A George IV silver salver, London, 1828, makers mark of **Rebecca Emes & Edward Barnard I**, with shell and scalloped edge, raised on three scroll feet, engraved with initials and scrolls, 25.5cm diameter, 20.4 troy oz. **£250-400** (+26.4% BP*)



Lot 368

368. An Edwardian silver three-piece bachelors tea set, Birmingham, 1908, makers mark of **E&Co**, oval shaped with part gadrooned decoration, teapot 12.5cm high, gross weight 26.7 troy ozs. **£300-500** (+26.4% BP*)

369. A composite set of twelve George III silver table spoons, seven marked London, 1781, makers mark of **GS** probably that of George Smith III; one marked London, 1783, makers mark of **RC** and four marked London, 1784, makers mark of **RC**, Old English pattern engraved with armorial crest and initial 'N', gross weight 25 troy oz. **£300-500** (+26.4% BP*)

370. A composite set of eleven George III silver table spoons, seven marked London, 1798, makers mark of **WE** over **WF**; three marked London, 1801, makers mark of **WE** over **WF**; and one marked Edinburgh, 1830, makers mark of **M&S**, all Old English pattern, engraved with initials 'DD', gross weight 22.5 troy oz. **£300-500** (+26.4% BP*)

371. A set of thirteen mainly Irish George III silver table spoons, comprising seven marked Dublin, 1780, makers mark of **MS**, three marked Dublin, 1786, makers mark of **I.D.**, and three marked Edinburgh, 1798, makers mark of **AH**, all Old English pattern with pointed ends and engraved armorial 'ESSAYEZ', gross weight 27.5 troy oz. **£300-500** (+26.4% BP*)



Lot 372

372. A Victorian silver salver, Sheffield, 1900, makers mark of **HELD.**, with shell and scalloped edge, raised on three foliate and scroll feet, 33cm diameter, 30.2 troy oz. **£400-600** (+26.4% BP*)



Lot 373

373. A 19th century silver mounted dirk, Edinburgh, makers mark of **JK**, the handle with carved knotwork detail, set with facet cut stone details, the velvet lined scabbard set complete with small knife and fork, the upper scabbard mount engraved with armorial crest 'ESSAYEZ', 40cm long. **£500-800** (+26.4% BP*)

374. A composite set of twenty four George III and later silver dessert forks, comprising, fourteen marked London, 1801, makers mark of **WE** over **WF**; eight marked London, 1840, makers mark of **MC** over **GA**; and two other with rubbed marks, all fiddle and shell pattern, engraved with initials 'DD', gross weight 40.9 troy oz. **£500-800** (+26.4% BP*)



Lot 375

375. A composite set of thirty three George III silver table forks, comprising, twenty one marked London, 1789, makers mark of WE over WF over WC; two marked London, 1798, makers mark of WE over WF; eight marked London, 1801, makers mark of WE over WF; and two marked London, 1815, makers mark of TN, Old English pattern, engraved with initials 'DD' to the reverse, gross weight 65.3 troy oz. **£800-1,200** (+26.4% BP*)



Lot 376

376. A large collection of assorted silver flatware, to include; a composite part suite of Old English pattern with reeded edge comprising a serving spoon, London, 1839, maker WT over RA; seven table spoons; six table forks; six dessert spoons; six dessert forks and four teaspoons, various dates and makers all engraved with armorial crest; together with remaining silver flatware, gross weight 57.7 troy oz. **£800-1,200** (+26.4% BP*)



Lot 377

377. A suite of Victorian silver flatware, London, 1839, makers mark of MC, comprising; twelve table forks; twelve table spoons; twelve teaspoons and two sauce ladles; fiddle pattern engraved with initials 'DD', gross weight 74.9 troy oz. **£1,000-1,500** (+26.4% BP*)



Lot 378

378. A composite part suite of George III and Victorian silver flatware, comprising; twelve table forks marked Edinburgh, 1863, makers mark of WM; seventeen dessert forks marked Edinburgh, 1863, makers mark of WM; twelve table spoons marked London, 1786, makers mark of HB; eighteen dessert spoons marked Edinburgh, 1863, makers mark of WM; eight teaspoons marked Edinburgh, 1863, makers mark of WM; two serving spoons marked Edinburgh, 1863, makers mark of WM; a pair of sugar tongs marked Edinburgh, 1863, makers mark of WM and a pair of similar sterling silver sauce ladles, gross weight 105 troy oz. **£1,200-1,800** (+26.4% BP*)



Lot 379

379. A George III silver oval strainer stand, London, 1800, makers mark of WS, with pierced details, engraved with armorial crest inscribed 'JE LE MAINTIENDRAI' and shield, 41.5cm x 28cm, 37.4 troy oz. £400-600 (+26.4% BP*)



Lot 380

380. A George III silver platter, London, 1784, makers mark of DS over RS for Daniel Smith & Robert Sharp, oval shaped with beaded edge, engraved with armorial crest 'ESSAYEZ', 41.5cm x 31cm, 46 troy oz. £500-800 (+26.4% BP*)



Lot 381

381. A pair of George III silver platters, London, 1784, makers mark of DS over RS for Daniel Smith & Robert Sharp, oval shaped with beaded edge, engraved with armorial crest 'ESSAYEZ', 46.5cm x 33.5cm, gross weight 121 troy oz. £1,500-2,000 (+26.4% BP*)

GOLD, WATCHES & JEWELLERY



Lot 382

382. A Victorian silver hunter cased pocket watch J. Dent, London, hallmarked London, 1862, with white, black, and pink enamel dial bearing baton markers, with subsidiary seconds dial, case diameter 51.9mm. £40-80 (+26.4% BP*)



Lot 383

383. A late 19th/early 20th century yellow metal necklace suspending a clam shaped pendant locket, the chain stamped '9CT', the pendant stamped '9CT', chain length 31.5cm long, gross weight 4.2 grams. £50-100 (+26.4% BP*)



Lot 384

384. A late 19th/early 20th century yellow metal and bloodstone ring, set with a shield shaped bloodstone panel, size 'L', gross weight 2.4 grams; together with a yellow metal ring, size 'M', 5.5 grams (2). **£50-100** (+26.4% BP*)



Lot 387

387. A yellow metal mounted jade brooch and pair of earrings, the brooch centred with a Chinese character symbol, 35.5mm diameter, the earrings with pear-shaped drops, 19.8mm long, gross weight 6.2 grams (3) **£50-100** (+26.4% BP*)



Lot 385

385. Three late 19th/early 20th century yellow metal brooches, to include a plain brooch with engine turned detail and two with split pearl decoration, gross weight 6.3 grams (3). **£50-100** (+26.4% BP*)



Lot 388

388. A pair of 9ct gold and fire opal stud earrings, each set with round faceted fire opal, 3.9mm diameter, gross weight 1 gram. **£50-100** (+26.4% BP*)



Lot 386

386. A vintage ladies stainless steel Omega Ladymatic bracelet wristwatch, the circular dial with baton numerals and expanding bracelet strap, case diameter 19.3mm. **£50-100** (+26.4% BP*)



Lot 389

389. A pair of 18ct white gold and peridot stud earrings, each set with a rectangular faceted peridot, 6.8mm x 4.9mm, gross weight 1.2 grams. **£70-150** (+26.4% BP*)



Lot 390

390. An 18ct gold mounted mandarin garnet pendant and chain, the oval faceted mandarin garnet 7mm long, suspended on 18ct gold chain, gross weight 3.3 grams. **£70-150** (+26.4% BP*)



Lot 391

391. An 18ct gold white opal, ruby and diamond ring, centred with a circular cabochon cut white opal in a border of four small rubies and two brilliant cut diamonds, size 'Q', gross weight 3.4 grams. **£70-150** (+26.4% BP*)



Lot 392

392. An 18ct gold ruby and diamond five stone ring, set with three rubies divided by two small old cut diamonds, size 'O 1/2', gross weight 3.8 grams. **£70-150** (+26.4% BP*)



Lot 393

393. An Art Nouveau yellow metal and turquoise cabochon brooch, makers mark of BHIJ, stamped '9ct', 30.5mm wide x 28.7mm long, gross weight 3.1 grams. **£70-150** (+26.4% BP*)



Lot 394

394. A 9ct gold and smoky quartz brooch, centred with round faceted stone in a pierced Celtic style border, makers mark of RA, 34.4mm diameter, gross weight 10 grams. **£70-150** (+26.4% BP*)



Lot 395

395. A late 19th century yellow metal and split pearl heart-shaped pendant, centred with a glazed panel enclosing a lock of hair, the outer border on the reverse inscribed "UNE GAGE D'AMOUR", 21.9mm wide x 22.8mm long, gross weight 5.4 grams. **£70-150** (+26.4% BP*)



Lot 396

396. A late 19th century yellow metal ruby and diamond chip cluster ring, size 'M', gross weight 2.9 grams. **£70-150** (+26.4% BP*)



Lot 399

399. A late 19th century yellow metal and diamond five stone ring, set with a row of five graduated old cut diamonds, stamped '18ct', size 'N', gross weight 3.8 grams. **£100-200** (+26.4% BP*)



Lot 397

397. Two 9ct gold smoky quartz single stone rings, both size 'P', gross weight 8.1 grams. **£70-150** (+26.4% BP*)



Lot 400

400. A group of four assorted late 19th/early 20th century yellow metal brooches, to include one centred with an oval moonstone cabochon, one centred with a Chinese character and two with split pearl decoration, gross weight 10 grams (4). **£100-200** (+26.4% BP*)



Lot 398

398. A late 19th century yellow metal and split pearl hinged bangle, 61mm wide, gross weight 10 grams. **£80-120** (+26.4% BP*)



Lot 401

401. A yellow metal mounted jade ring and pair of jade pendant earrings, the ring set with a pierced and flower carved panel, size 'L', the earrings carved and pierced with foliate details, the screw fixings stamped '9ct', overall drop 61mm, gross weight 9.1 grams (3). **£100-200** (+26.4% BP*)



Lot 402

402. A late 19th century yellow metal and split pearl star-shaped brooch, 36.2mm diameter, gross weight 8.7 grams. **£100-200** (+26.4% BP*)



Lot 403

403. A pair of 18ct white gold ruby and diamond cluster stud earrings, each set an oval faceted ruby in a border of twelve small round brilliant cut diamonds, 9mm x 7.2mm, gross weight 2.5 grams. **£100-200** (+26.4% BP*)



Lot 404

404. A pair of 18ct white gold emerald and diamond stud earrings, each set with an oval faceted emerald and four small brilliant cut diamonds to the corners, 6.1mm long, gross weight 2.2 grams. **£100-200** (+26.4% BP*)



Lot 405

405. A pair of 18ct gold and demantoid garnet stud earrings, each set with round faceted demantoid garnet, 5.3mm diameter, gross weight 1.3 grams. **£100-200** (+26.4% BP*)



Lot 406

406. A yellow metal gatelink bracelet, with 9ct gold heart shaped lock, 9.5 grams. **£120-180** (+26.4% BP*)



Lot 407

407. A pair of 9ct gold cufflinks, rectangular with hinged fixing bar, 17.3mm x 11.5mm, 8.6 grams. **£120-180** (+26.4% BP*)



Lot 408

408. A 9ct gold pendant and chain, the circular pendant with makers mark 'OMG' for Ola Gorie, chain 46cm long, pendant 26mm diameter, 12.4 grams. **£150-300** (+26.4% BP*)

409. A 9ct gold and diamond three stone ring, illusion set, size 'R'; together with two other yellow and white metal gem set rings, gross weight 9.4 grams (3). **£150-300** (+26.4% BP*)



Lot 410

410. A jade bead double strand graduated necklace, each strand set with a row of graduated jade beads, the clasp stamped '18K', shortest length 43cm, gross weight 66.8 grams. **£150-300** (+26.4% BP*)



Lot 411

411. A pair of 18ct gold and tanzanite stud earrings, each set with round faceted tanzanite, 5.9mm diameter, gross weight 1.6 grams. **£150-300** (+26.4% BP*)

412. An 18ct gold pear-shaped citrine and diamond pendant suspended on yellow metal chain, the citrine 17.8mm long, total diamond weight estimated at 0.33ct, the chain stamped 375, gross weight 9.9 grams. **£150-300** (+26.4% BP*)



Lot 413

413. A yellow metal mounted fire opal and diamond pendant suspended on 18ct gold chain, the pendant drop 18.1mm long, gross weight 4.6 grams. **£150-300** (+26.4% BP*)



Lot 414

414. A white metal mounted tourmaline and diamond pendant necklace with 18ct white gold chain, the pear-shaped tourmaline drop 9.7mm long, suspended from a single brilliant cut diamond, gross weight 4.2 grams. £150-300 (+26.4% BP*)



Lot 415

415. A pair of 18ct gold amethyst and diamond stud earrings, set with oval faceted amethyst topped by three small brilliant cut diamonds, 13.4mm long, gross weight 3.5 grams. £150-300 (+26.4% BP*)



Lot 416

416. A yellow metal two stone diamond ring, with two illusion set brilliant cut diamonds, stamped '18CT PLAT', size 'R', gross weight 3.3 grams. £150-300 (+26.4% BP*)



Lot 417

417. A yellow metal and diamond half hoop ring, set with eight uniform brilliant cut diamonds, size 'O', gross weight 2.8 grams. £150-300 (+26.4% BP*)



Lot 418

418. A 9ct gold sapphire and diamond ring, set with seven round faceted sapphires divided by seven brilliant cut diamonds, size 'R', gross weight 3.1 grams. £150-300 (+26.4% BP*)



Lot 419

419. An 18ct gold sapphire and diamond ring, set with three sapphires divided by two brilliant cut diamonds, size 'M', gross weight 2.3 grams. £150-300 (+26.4% BP*)



Lot 420

420. An 18ct gold sapphire and diamond five stone ring, set with three round faceted sapphires divided by two brilliant cut diamonds, size 'Q', gross weight 2.4 grams. **£150-300** (+26.4% BP*)



Lot 421

421. A yellow metal rhodolite garnet and diamond ring, centred with oval faceted rhodolite garnet flanked on each side by a small round brilliant cut diamond, size 'R', tested as 18ct gold, gross weight 3.8 grams. **£150-300** (+26.4% BP*)



Lot 422

422. An 18ct gold amethyst and diamond ring, set with two oval faceted amethysts and two small brilliant cut diamonds, size 'Q', gross weight 3.2 grams. **£150-300** (+26.4% BP*)



Lot 423

423. An 18ct yellow and white gold three stone diamond heart shaped pendant necklace, the heart shaped pendant set with three brilliant cut diamonds, the pendant 12.9mm long including bail, gross weight 4.3 grams. **£150-300** (+26.4% BP*)



Lot 424

424. An 18ct yellow and white gold sapphire and diamond pendant necklace, centred with oval faceted sapphire drop within a border of eighteen brilliant cut diamonds, gross weight 6 grams. **£150-300** (+26.4% BP*)



Lot 425

425. A pair of 18ct white gold and diamond drop stud earrings, each set with a brilliant cut diamond drop suspended from a brilliant cut stud, 19.3mm long, gross weight 2.3 grams. **£150-300** (+26.4% BP*)



Lot 426

426. A pair of 18ct gold, cultured pearl and diamond stud earrings, each set with a single brilliant cut diamond and cultured pearl, 15mm long, gross weight 1.7 grams. **£150-300** (+26.4% BP*)



Lot 427

427. An 18ct gold yellow and white diamond two stone double heart shaped pendant and chain, the pendant set with a yellow coloured heart shaped diamond topped by a smaller white diamond, gross weight 1.7 grams. **£200-300** (+26.4% BP*)



Lot 428

428. An 18ct white gold and diamond set crucifix pendant necklace, the crucifix pendant set with five brilliant cut diamonds, pendant 25.6mm long, gross weight 4.1grams. **£200-300** (+26.4% BP*)



Lot 429

429. An 18ct white gold, amethyst and diamond pendant necklace, the pendant centred with a round faceted amethyst within two borders of brilliant cut diamonds, 14.1mm, gross weight 4.8 grams. **£200-300** (+26.4% BP*)



Lot 430

430. An 18ct gold and diamond two pendant necklace, the pendant set with two brilliant cut diamonds, pendant 28.2mm long, gross weight 4 grams. **£200-300** (+26.4% BP*)



Lot 433

433. An 18ct gold sapphire and diamond twist ring, set with two oval faceted sapphires and four brilliant cut diamonds of graduated size, size 'P', gross weight 3.5 grams. **£200-300** (+26.4% BP*)



Lot 431

431. An 18ct yellow and white gold diamond ring, centred with brilliant cut diamond flanked on both sides by a row of four smaller graduated brilliant cut diamonds, size 'N', gross weight 5.7 grams. **£200-300** (+26.4% BP*)



Lot 432

432. An 18ct gold pink and blue sapphire and diamond cluster ring, centred with a blue oval faceted sapphire flanked on each side by a pink oval faceted sapphire and bordered with eight small brilliant cut diamonds, size 'Q', gross weight 4.1 grams. **£200-300** (+26.4% BP*)



Lot 435

435. A late 19th century yellow metal and split pearl articulated necklace, set with five graduated pearls divided by panels of foliage, in original fitted case, gross weight 20 grams. **£200-300** (+26.4% BP*)

436. Two 9ct gold wristwatches, to include a vintage 9ct gold cased Bernex gentleman's wristwatch with yellow and white metal expandable strap; together with a 9ct gold cased ladies Corvette wristwatch with yellow metal bracelet strap (2). **£200-300** (+26.4% BP*)

437. Seven assorted 9ct gold rings, gross weight 14.8 grams. **£200-300** (+26.4% BP*)



Lot 438

438. A yellow metal gatelink bracelet, with heart shaped lock stamped '9ct', 15 grams. **£250-400** (+26.4% BP*)



Lot 439

439. A pair of 18ct gold yellow sapphire and diamond cluster drop earrings, each centred with oval faceted yellow sapphire in a border of ten brilliant cut diamonds suspended from single brilliant cut diamonds, 24.6mm long, gross weight 4.5 grams. **£250-400** (+26.4% BP*)



Lot 440

440. An 18ct gold and diamond solitaire ring, the brilliant cut diamond estimated to weigh 0.50ct, size 'R', gross weight 2.3 grams. **£250-400** (+26.4% BP*)



Lot 441

441. A yellow and white metal five stone diamond ring, set with a graduated row of five brilliant cut diamonds, size 'Q 1/2', gross weight 3.6 grams. **£250-400** (+26.4% BP*)



Lot 442

442. An 18ct gold ruby and diamond ring, centred with oval faceted ruby flanked on both sides by three small brilliant cut diamonds, size 'R', gross weight 6.6 grams. **£250-400** (+26.4% BP*)



Lot 443

443. An 18ct white gold and diamond pendant necklace, the pendant set with three graduated brilliant cut diamonds, pendant 18.2mm long, gross weight 2.6 grams. **£250-400** (+26.4% BP*)



Lot 445

445. An 18ct white gold aquamarine and diamond pendant and chain, the pendant centred with oval faceted aquamarine, 13mm long, within a border of twenty-six brilliant cut diamonds, the bail set with a row of four graduated brilliant cut diamonds, suspended on 18ct white gold chain, gross weight 4.5 grams. **£250-400** (+26.4% BP*)



Lot 444

444. An 18ct white gold and diamond cluster pendant and chain, the diamond pendant set with a central brilliant cut diamond, estimated to weigh approximately 0.75ct, within a border of eight smaller brilliant cut diamonds, 9.5mm diameter, the bail set with a row of six graduated brilliant cut diamonds, gross weight 3.6 grams. **£250-400** (+26.4% BP*)



Lot 446

446. An 18ct white gold tanzanite and diamond pendant and white metal chain, the pendant set with a rectangular faceted tanzanite and topped with three round brilliant cut diamonds, 14mm long, suspended on associated white metal chain, gross weight 3.1 grams. **£250-400** (+26.4% BP*)



Lot 447

447. An 18ct white gold and diamond circular pendant necklace, the circular pendant set with twenty brilliant cut diamonds, estimated total weight of 2.00ct, 22.2mm diameter, gross weight 3.7 grams. **£300-500** (+26.4% BP*)



Lot 448

448. A pair of 18ct white gold and diamond stud earrings, each with a brilliant cut diamond estimated to weigh 0.80ct, gross weight 1.5 grams. **£300-500** (+26.4% BP*)



Lot 449

449. An 18ct gold ruby and diamond five stone ring, set with three round faceted rubies divided by two brilliant cut diamonds, size 'R', gross weight 5.6 grams. **£400-600** (+26.4% BP*)

450. An 18ct gold, emerald and diamond link bracelet, centred with four rectangular links each enclosing six square cut emeralds divided by five brilliant cut diamonds, 17.5cm long, gross weight 13.2 grams. **£400-600** (+26.4% BP*)



Lot 451

451. A late Victorian yellow metal ruby and diamond hinged bangle, set with a row of five graduated old cut diamonds divided by four oval faceted rubies, tested as 18ct gold, 64.4mm wide, gross weight 13.2 grams. **£400-600** (+26.4% BP*)



Lot 450

452. Four assorted 18ct gold rings, gross weight 12.1 grams. £400-600 (+26.4% BP*)



Lot 453

453. An 18ct gold emerald and diamond set parure, comprising a ring set with oval cut emerald and two rows of six graduated brilliant cut diamonds, size 'R'; a pair of similar earrings and necklace, gross weight 28.4 grams. £400-600 (+26.4% BP*)



Lot 454

454. A pair of white metal, cultured pearl and diamond earrings, each set with eight round brilliant cut diamonds, with removable cultured pearl drops, gross weight 10 grams, 25mm long. Gemmology report available for this lot. £500-800 (+26.4% BP*)



Lot 455

455. A 9ct gold Albert chain, 50.5cm long, 27 grams. £600-900 (+26.4% BP*)



Lot 456

456. An 18ct gold and diamond set rectangular link bracelet, set with four round evenly spaced circular panels each enclosing seven small brilliant cut diamonds, 19.5cm long, gross weight 21.6 grams. £600-900 (+26.4% BP*)



Lot 457

457. A yellow metal sapphire and diamond set hinged bangle, centred with oval faceted sapphire flanked on each side by eight small brilliant cut diamonds, stamped '750', 62.6mm wide, gross weight 20.8 grams. £600-900 (+26.4% BP*)



Lot 458



Lot 459

458. A high carat yellow metal necklace, Egyptian marks, tested as 22ct gold, 55.3 grams.
£2,000-3,000 (+26.4% BP*)

459. A white metal and diamond set Y-shaped centrepiece necklet, set with 126 round brilliant cut diamonds ranging from 0.03ct to 0.04ct with a total estimated weight of 4.41ct, 25 round brilliant cut diamonds ranging from 0.05ct to 0.07ct with a total estimated weight of 1.50ct, and 37 round brilliant cut diamonds each estimated to weight 0.04ct with a total estimated weight of 1.44ct, gross weight 29 grams. Gemmology report available for this lot.
£2,000-3,000 (+26.4% BP*)



Lot 460

460. A yellow metal, diamond, emerald, ruby and sapphire demi-parure, comprising a triple row centrepiece necklace, 43.5cm long at shortest length and pair of matching oval frame drop earrings, 42mm long, gross weight 78.9 grams. Gemmology report available for this lot.
£4,000-6,000 (+26.4% BP*)

GLASS

461. A collection of Ysart and Strathearn glass, to include, three small two handled baskets, 14.5cm wide; two small baskets, 12.5cm wide; two bowls, 17.5cm diameter and 15cm diameter; a top hat posy holder, 10.5cm wide and a vase, 20cm high (9).
£50-100 (+26.4% BP*)

462. A collection of twelve Vasart and other Scottish miniature glass vases, to include a pink Vasart vase with a band of coloured inclusions, bearing original paper label, 10.5cm high, and eleven other various coloured vases (12).
£50-100 (+26.4% BP*)

463. A collection of twenty-five assorted Scottish glass paperweights, assorted shape, size and colour (25).
£100-200 (+26.4% BP*)



Lot 463

464. A Vasart tulip lamp, mottled green and pink with a band of typical coloured whorls, lacking lamp fittings, 24cm high. **£70-150** (+26.4% BP*)

465. Two pieces of Monart glass, comprising; a small bowl, shape UB, in the Royal wedding colour combination, bearing original paper label inscribed 'UB.X', 15.5cm diameter; and a miniature sample vase, shape D, mottled purple and blue with gold-coloured inclusions, 11cm high (2). **£50-100** (+26.4% BP*)

466. A Monart vase, shape RB, in the Royal wedding colour combination, 15.5cm high. **£70-150** (+26.4% BP*)

467. A Monart vase, shape SA, mottled dark and light blue with gold-coloured inclusions and five pulled up lines, 22.5cm high. **£100-200** (+26.4% BP*)

468. An early 20th century Continental green glass flower vase, with gilded decoration of flowers and scrolls, 24.5cm high. **£40-80** (+26.4% BP*)



Lot 464



Lot 466



Lot 467



Lot 469

469. An early 20th century Salviati clear glass and enamel tazza, decorated with seven running horses, flowers and foliage, 27cm diameter x 23.5cm high. **£50-100** (+26.4% BP*)



Lot 470

470. A large antique air-twist wine glass, the ogee bowl engraved with fruiting vine, the stem with spiral airtwist detail, on conical circular foot, 21cm high. **£100-200** (+26.4% BP*)



Lot 471

471. Two similar 18th century wine glasses, each with conical bowls, plain stems and air bubble inclusion, on folded conical circular feet, 16cm high and 16.5cm high. **£100-200** (+26.4% BP*)



Lot 472

472. Lys, a Lalique opalescent glass bowl, wheel cut signature, 'R.LALIQUE FRANCE', 24cm diameter x 12.5cm high. **£200-400** (+26.4% BP*)

473. Lamp de Cheminée Poissons, Lalique, a clear and blue stained glass table lamp, stencil mark 'R.LALIQUE FRANCE', 21cm high x 20.5cm wide. £400-600 (+26.4% BP*)

474. Hirondelles, Lalique, a clear and frosted glass and bronze sculpture, moulded mark 'R.LALIQUE', 36cm high x 26.5cm wide. £1,000-2,000 (+26.4% BP*)

475. Monnaie du Pape, Lalique, a clear and blue stained glass vase, etched signature 'R.Lalique France No.897', 23cm high. £1,000-2,000 (+26.4% BP*)



Lot 473



Lot 474



Lot 475

BRITISH & EUROPEAN CERAMICS



Lot 476

476. A Wemyss pottery model of a pig, decorated with shamrocks, green painted mark "Wemyss", 42cm long. **£500-800** (+26.4% BP*)



Lot 477

477. Three 19th century English pottery figure groups, to include man with a goat, 22.5cm high; leopard spill vase, 16cm high; and a recumbent lion, 9.5cm high (3). **£70-150** (+26.4% BP*)

478. Five 19th century English pottery figure groups, to include 'ST. MATTHEW', 18cm high; 'Charity', 21cm high and three others (5). **£70-150** (+26.4% BP*)

479. A Royal Worcester figure of a lady modelled by James Hadley, standing wearing a tall hat holding a bowl in her right hand, impressed and green printed marks no. 1875, 17cm high. **£70-150** (+26.4% BP*)



Lot 480

480. A Royal Worcester hand painted bottle vase decorated by J N Stinton, decorated with two Highland cattle in a misty landscape, signed, puce printed marks and no.1661, 23cm high. **£200-300** (+26.4% BP*)

481. A pair of Royal Worcester figural sweet meat dishes modelled by James Hadley, each modelled with a boy and girl leaning on a branch over an oval shaped basket, impressed and puce printed marks, 20.5cm high x 17cm wide. **£200-300** (+26.4% BP*)

482. A pair of Royal Worcester figure groups in the style of Kate Greenaway, modelled as a boy holding a basket and attendant girl holding a basket, the details picked out in gilt, impressed and puce printed marks, 22cm high. **£200-300** (+26.4% BP*)

483. A pair of Royal Worcester Neoclassical style figural candlesticks, the details picked out in gilt, green printed marks, 29cm high. **£200-300** (+26.4% BP*)



Lot 484

484. A pair of Royal Worcester ewers decorated by Charley Baldwin, both decorated with four swans on a typical blue ground, one signed "C. H. C. Baldwin", puce printed marks and no.1944, 24cm high. **£2,000-3,000** (+26.4% BP*)

485. An antique Delft pottery flowerpot, decorated with flowers and butterflies, 11cm high x 21cm wide x 12.5cm deep. **£40-80** (+26.4% BP*)

486. A Meissen porcelain oval-shaped tureen and cover, decorated with Deutsche Blumen and butterflies, blue crossed swords mark, 18.5cm wide x 12.5cm high. **£40-80** (+26.4% BP*)

487. A gilt metal mounted Chantilly porcelain hexagonal shaped jar, converted to night lamp, 22cm high. **£50-100** (+26.4% BP*)



Lot 487



Lot 488

488. A late 19th century Continental white metal mounted pottery circular shaped box and cover, the hinged cover with puce decoration of children and boat in a river landscape with ruins in the background, the underside with painted marks "S. X.", approximately 16.5cm diameter x 9cm high. **£50-100** (+26.4% BP*)



Lot 489

489. A Chantilly porcelain white metal mounted jar and cover, the cover with fruit and leaf finial, the sides with Kakiemon decoration of flowers and foliage, painted marks, 17.5cm high. £80-120 (+26.4% BP*)



Lot 490

490. A pair of late 19th century porcelain owl form table lamps, with glass inlaid eyes, overall 37.5cm high. £100-200 (+26.4% BP*)



Lot 491

491. Two Karl Ens porcelain models of Cockatoos, printed and impressed marks, 36cm high and 34cm high (2). £100-200 (+26.4% BP*)



Lot 492

492. A 19th century Italian Maiolica pottery vase, decorated with flowers, foliage and scrolls in yellow, blue and green, 23cm high; together with a similar Albarello jar of corresponding design, 30.5cm high (2). £100-200 (+26.4% BP*)

493. A pair of Vienna porcelain flowerpots, decorated with colourful foliate sprays, the rims with shell and scroll detail raised on four short scroll feet, 15cm diameter x 12cm high. £100-200 (+26.4% BP*)

CHINESE PORCELAIN



Lot 494

494. A pair of continental pottery Albarello drug jars, both inscribed in the centre section within borders of flowers and foliage, centred in the lower borders with colourfully painted crests, 21cm high. **£200-300** (+26.4% BP*)

495. A late 19th/early 20th century Mettlach Pâte-sur-Pâte charger by Johann Baptist Stahl (1869-1932), depicting an episode from the allegory of Ulysses, signed and impressed marks, 46.5cm diameter. **£200-300** (+26.4% BP*)

496. A Royal Dux porcelain Art Nouveau table centrepiece, modelled as two ladies supporting a shell, applied impressed triangle mark and impressed "875", 53cm high. **£250-500** (+26.4% BP*)



Lot 497

497. A pair of late 19th century Continental porcelain pink ground cachepots, decorated with panels of putti in river landscapes the scroll handle with gilt detail and laurel wreath drops, 18cm diameter x 16.5cm high. **£400-600** (+26.4% BP*)

498. A Chinese porcelain famille rose teapot and cover, Qing Dynasty, decorated with peony and birds, with carved wooden handle, 12.5cm high. **£30-70** (+26.4% BP*)



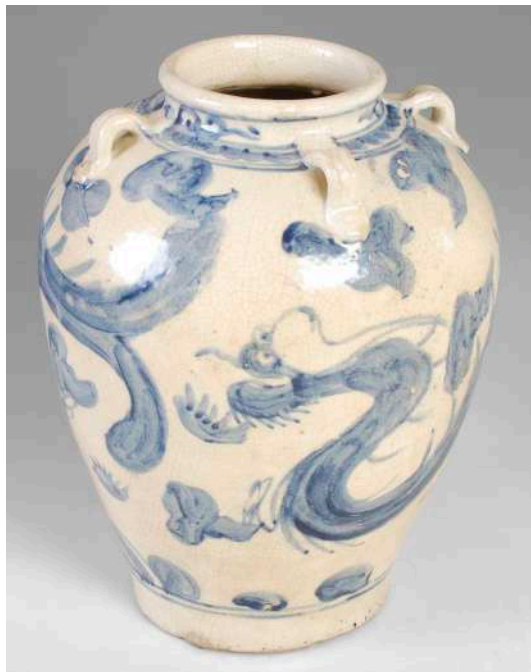
Lot 499

499. A Chinese porcelain famille rose octagonal shaped charger, Qing Dynasty, decorated with rock work, foliage and peony, 36cm diameter. **£40-80** (+26.4% BP*)

500. A Chinese porcelain blanc de chine figure of Guanyin and child, 36cm high. **£50-100** (+26.4% BP*)



Lot 500



Lot 501

501. A Chinese blue and white porcelain jar, decorated with a dragon, the shoulder set with four loop terminals, 30cm high. **£50-100** (+26.4% BP*)



Lot 502

502. A Chinese porcelain blue ground punch bowl, Qing Dynasty, the interior decorated with peony spray, 30cm diameter x 12.5cm high. **£50-100** (+26.4% BP*)



Lot 503

503. A Chinese porcelain celadon bowl, Qing Dynasty, raised on three integral feet, 25cm diameter at the rim x 13cm high. **£50-100** (+26.4% BP*)



Lot 504

504. A Chinese porcelain blue and white circular strainer, Qing Dynasty, decorated with scattered foliate sprays within a diaper border, 34.5cm diameter. **£50-100** (+26.4% BP*)

505. A Chinese porcelain charger, late 19th/early 20th century, decorated with three figures in a garden holding a scroll within a blue ground border decorated with peony and foliage, 37cm diameter. **£50-100** (+26.4% BP*)



Lot 506

506. A Chinese porcelain famille rose Canton vase, Qing Dynasty, decorated with panels of figures divided by panels of flowers, fruit, butterflies, and birds the neck with shishi terminals the shoulders set with pairs of chilong, 35cm high. **£70-150** (+26.4% BP*)



Lot 507

507. A Chinese porcelain famille rose tankard, Qing Dynasty, decorated with a rectangular shaped panel enclosing a ribbon tied oval pendant enclosing flowers, on a ground decorated with butterflies and foliate sprays, 15cm high. **£70-150** (+26.4% BP*)



Lot 508

508. A pair of Chinese blue and white porcelain Gu-shaped beaker vases, Qing Dynasty, decorated with peony, lotus, birds and butterflies, four-character mark to base, 15.5cm high. **£70-150** (+26.4% BP*)



Lot 509

509. A Chinese blue and white porcelain white metal mounted hexagonal shaped scent bottle and stopper, Qing Dynasty, decorated with three ladies divided by urns issuing flowers, 13cm high; together with a Chinese blue and white porcelain square shaped saucer dish, Qing Dynasty, decorated with two figures in a fenced garden, ruyi mark to base, 12cm square (2). **£80-120** (+26.4% BP*)



Lot 510

510. A Chinese porcelain blue ground Rouleau vase, Qing Dynasty, decorated with two rectangular shaped panels enclosing figures on a blue ground with gilded details of flowers and foliage, 23cm high. **£100-200** (+26.4% BP*)

511. A set of four Chinese porcelain famille rose soup plates, Qing Dynasty, decorated with ribbon-tied sprays of peony within a panelled border, 23cm diameter. **£100-200** (+26.4% BP*)

512. A Chinese porcelain celadon dish, Qing Dynasty, the central circular roundel incised with peony and foliage within an incised scroll border, 25.5cm diameter. **£100-200** (+26.4% BP*)

513. A Chinese Qingbai circular bowl, possibly Song Dynasty, the interior with circular roundel bearing decoration of fish, 17cm diameter x 4.3cm high. **£100-200** (+26.4% BP*)

514. A Chinese porcelain celadon glazed dish, Qing Dynasty, the interior carved with roundel of peony flowers within a fluted border, 34cm diameter. **£100-200** (+26.4% BP*)



Lot 512



Lot 513



Lot 514



Lot 515

515. A Chinese porcelain yellow ground reticulated jar and cover, Jiaqing seal mark but later, decorated with two oval shaped panels enclosing boys in a garden to one side, boy and warrior in garden to the other, on a yellow ground with lotus scroll decoration, the rim and cover with pierced detail, seal mark to base, 24cm high. **£100-200** (+26.4% BP*)



Lot 516

516. A Chinese porcelain famille rose octagonal shaped charger, Qing Dynasty, decorated with peony and two peacocks standing on a rock within a border of lotus and other flowers, 39cm diameter. **£100-200** (+26.4% BP*)



Lot 517

517. A near pair of Chinese porcelain presentation punch bowls, one inscribed 'May Prosperity attend Captn. George and Margareth Anderson of Perth', the base inscribed 'From your devoted Liebman and Mathiasen', with old metal staple repairs, 28cm diameter x 11.5cm high; the other inscribed 'Success to the Commodore Captn. William Young of Aberdeen', the base inscribed 'From your devoted Nichols Liebman and Co.', 29cm diameter x 11.5cm high. **£100-200** (+26.4% BP*)



Lot 518

518. A Chinese porcelain blanc de chine figure of Guanyin, holding a lotus flower, 51cm high. **£100-200** (+26.4% BP*)



Lot 519

519. A pair of Chinese porcelain monochrome bottle vases, late Qing Dynasty, the blue glazed grounds with incised decoration of peony and leaves, 28.5cm high. £100-200 (+26.4% BP*)



Lot 520

520. A pair of Chinese porcelain twin handled vases, early 20th century, decorated in iron red with shishi and cubs, 55.5cm high; together with a similar vase mounted as a lamp, 44.5cm high excluding lamp shade (3). £150-300 (+26.4% BP*)



Lot 521

521. A Chinese porcelain blue and white crackle glaze vase, Qing Dynasty, decorated with long-tail bird perching on rockwork amidst peony within horizontal burnished borders with incised line detail, the neck with twig-form terminals, incised four-character mark to base, 44cm high. £150-300 (+26.4% BP*)



Lot 522

522. A Chinese blue and white porcelain figure of Guanyin, 57cm high. £200-300 (+26.4% BP*)



Lot 523

523. A Chinese porcelain gilt metal mounted celadon vase mounted as a table lamp, decorated in shallow relief on both sides with dragon roundels, overall including lamp fittings, 36cm high.
£200-300 (+26.4% BP*)



Lot 525

525. A Chinese porcelain blue and white jar with pierced wood cover, Qing Dynasty, decorated with court figures within a fenced garden of palm trees, the underside with double circle mark, overall 34cm high.
£400-600 (+26.4% BP*)



Lot 524

524. A Chinese porcelain Wucai vase, decorated with court figures on a terrace, 27cm high.
£250-500 (+26.4% BP*)



Lot 526

526. A Chinese porcelain famille rose three piece garniture, comprising a tall twin-handled vase decorated with foliate sprays and butterflies, the handles formed as dragons, 28cm high; together with a pair of smaller twin-handled vases decorated with cornucopia issuing foliate sprays, butterflies, and scattered flowers, the handles similarly formed as dragons, 20.5cm high. **£400-600** (+26.4% BP*)



Lot 527

527. A Chinese porcelain bottle vase, bearing Qianlong seal mark but later, decorated with nine figures in a fenced garden on a turquoise blue ground with lotus scroll decoration the base with Qianlong seal mark, 24.5cm high. £500-800 (+26.4% BP*)



Lot 529

529. A large Chinese porcelain famille rose Canton vase, Qing Dynasty, decorated with rectangular shaped panels enclosing court figures on a ground decorated with scattered flowers, objects and smaller shaped panels enclosing court figures, the neck with pairs of shishi and ball terminals, the shoulders set with pairs of chilong, 63cm high. £800-1,200 (+26.4% BP*)

528. A pair of Chinese porcelain blue and white Swatow dishes/chargers, both decorated with central roundel enclosing a long-tailed bird within a panelled border of trees, fruit and scroll motifs, 37cm diameter. £500-800 (+26.4% BP*)



530. A pair of Chinese porcelain famille rose millefleur pear-shaped vases, Qing Dynasty, densely decorated with flowers and foliage on a gilded ground with elephant mask terminals, bearing drilled Qianlong marks but later, 30cm high. £800-1,200 (+26.4% BP*)

531. A pair of Chinese porcelain famille rose Canton vases and covers, Qing Dynasty, decorated with panels of court figures on a gilded ground decorated with flowers, fruit, and butterflies, the shoulders set with figural terminals, the covers with figural finials, 54cm high. £4,000-6,000 (+26.4% BP*)



Lot 530



Lot 531

CHINESE WORKS OF ART



Lot 532

532. A Chinese Tang Dynasty style terracotta figure of a female cymbal player, 32cm high. £40-80 (+26.4% BP*)



Lot 534

534. A Chinese bronze and champlevé enamel archaic style vase, decorated with flowers and foliage in red, blue, green, and white coloured enamels, the neck studded with coloured cabochon stones, with stylised mask-form handles, square four-character mark to base, 31cm high. £70-150 (+26.4% BP*)



Lot 533

533. A Chinese Tang Dynasty style terracotta model of a horse, on carved wood stand with inverted scroll ends, overall 39cm high x 42cm long. £50-100 (+26.4% BP*)



Lot 535

535. A large Chinese lacquer and mother of pearl textured surface Meiping vase, 20th century, the shoulder decorated with three circular pictorial panels, two of birds on flowering branches, one of hares within grape vines and one with two deer, 60cm high. £80-120 (+26.4% BP*)



Lot 536

536. A Chinese pale celadon jade figure of a child and dog, 48.6mm high. £100-200 (+26.4% BP*)



Lot 538

538. A 19th century white metal mounted Kapala, with turquoise and coral cabochon detail, on triangular gilt metal stand, cast with skulls and pierced with scrolls, 18cm long x 14cm wide x 11cm high on stand. £100-200 (+26.4% BP*)



Lot 537

537. A Chinese pale celadon jade figure of a boy and dog, 60.9mm high. £100-200 (+26.4% BP*)



Lot 539

539. A Chinese carved agate model of a peach, 55.2mm long x 42.9mm wide. £100-200 (+26.4% BP*)



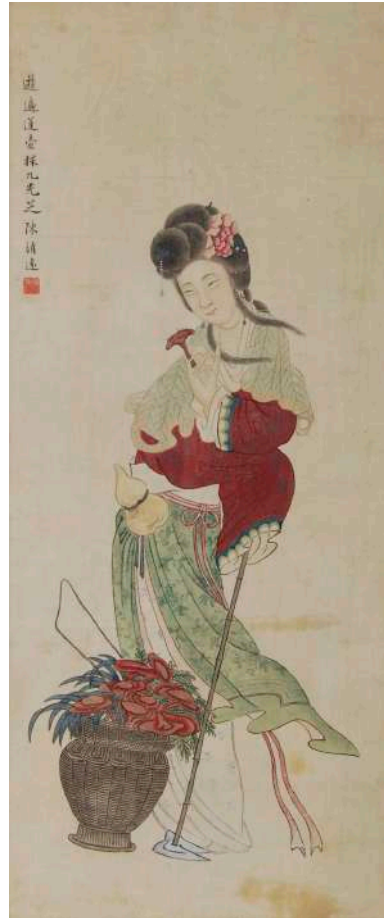
Lot 540

540. A pair of Chinese carved wood figure groups of boys sitting on the backs of water buffalo, late 19th/early 20th century, both resting on carved and pierced wood stands, 21.5cm high x 31.5cm wide. £100-200 (+26.4% BP*)



Lot 541

541. A Chinese carved alabaster figure of Guanyin, carved standing holding a fruiting branch with attendant boy and crane, on carved and fitted wood stand, 48.5cm high. £100-200 (+26.4% BP*)



Lot 542

542. Chinese School, probably 19th century, a Chinese beauty holding a ruyi fungus, ink and colour on silk, signed upper left, 72.5cm x 31cm, framed and glazed 75cm x 34cm. £100-200 (+26.4% BP*)



Lot 543

543. Chinese School, Qing Dynasty, Cockerel, hen, chicks and eagle, watercolour on paper laid on board, 61cm x 84cm, in red and gilt pierced wood frame, 78.5cm x 102.5cm. £100-200 (+26.4% BP*)

**544. A Chinese darkwood rectangular shaped tray, possibly Huanghuali, with dished interior and rounded corners, 35.5cm x 24cm.
£150-300 (+26.4% BP*)**



Lot 544

**545. A Chinese gilt bronze figure of Guanyin, late Qing Dynasty, with red and blue painted details, 27cm high.
£150-300 (+26.4% BP*)**



Lot 545

**546. A Chinese carved wood figure of Guanyin, late Qing Dynasty, seated in meditation on a lotus throne with right hand raised, with red, blue and gilded details, 43.5cm high.
£150-300 (+26.4% BP*)**



Lot 546



Lot 547

547. A Chinese rock crystal figure of Guanyin, Qing Dynasty, carved standing holding a flowering branch, on carved and pierced wood fitted stand, overall 27cm high. £150-300 (+26.4% BP*)



Lot 548

548. A Chinese carved wood figure of Guanyin, late 19th/early 20th century, with gilded and painted details, seated in meditation on a lotus throne, 53cm high. £200-300 (+26.4% BP*)



Lot 549

549. A Chinese green stone vase and cover on fitted hardwood stand, 20th century, the vase carved in relief with scrolls and stylised birds, the cover with lion dog finial, overall 26.5cm high. £200-300 (+26.4% BP*)



Lot 550

550. A large Chinese gilt bronze figure of Guanyin, 19th/early 20th century, modelled seated with right hand raised, 41cm high x 29cm wide.
£250-500 (+26.4% BP*)



Lot 551

551. A small Chinese bronze 'rope tied' vase, Qing Dynasty, 9.5cm high. **£300-500** (+26.4% BP*)



Lot 552

552. Chinese School, late 19th/early 20th century, three ladies around a table with attendant dogs, colour on paper, a scroll picture, mounted in a double glass frame, overall size 140cm x 71cm.
£400-600 (+26.4% BP*)

JAPANESE CERAMICS



Lot 553

553. A 19th century Japanese Imari bowl, the interior centred with a palm tree within a fenced garden of prunus blossom, the exterior decorated with peony, 25cm diameter x 12.5cm high. **£40-80** (+26.4% BP*)



Lot 555



Lot 554

554. A 19th century Japanese Imari porcelain charger, the centre decorated with circular roundel enclosing floral spray within panelled border, 36.5cm diameter. **£40-80** (+26.4% BP*)



Lot 556

555. A pair of Japanese Imari porcelain plates, late 19th/early 20th century, centred with chrysanthemum roundel within a panelled border of phoenix, 21cm diameter. **£40-80** (+26.4% BP*)

556. A pair of 19th century Japanese Imari porcelain plates, decorated with urns issuing peony within a panelled border, 22cm diameter. **£40-80** (+26.4% BP*)

557. A group of three Japanese Imari porcelain chargers, late 19th/early 20th century, comprising one decorated with a basket issuing flowers resting on a table, 47cm diameter; one decorated with a central roundel enclosing landscape within a border of flowers and foliage, 47.5cm; and another smaller example of lobed form decorated with central roundel enclosing peony within a panelled border of landscape views and diaper motifs, 31.5cm diameter, all with damages. **£50-100** (+26.4% BP*)

558. A Japanese Imari porcelain flower shaped dish, late 19th/early 20th century, of lobed form decorated with panels of peony, long-tailed birds, fruit, chrysanthemum and other animals, 31cm diameter. £50-100 (+26.4% BP*)



Lot 559

559. A 19th century Japanese Imari porcelain barber's bowl, decorated with urn issuing flowers and foliage, 27.5cm diameter. £50-100 (+26.4% BP*)



Lot 560

560. A late 19th century Japanese Imari porcelain octagonal shaped bowl, the interior decorated with roundel enclosing fenced garden and flowering tree, within a border of peony and blossom branches, 19cm diameter x 9cm high; together with another 19th century Japanese Imari porcelain bowl of circular form, the interior decorated with central flower spray flanked by three scattered foliate sprays, 15.5cm diameter x 8cm high (2). £50-100 (+26.4% BP*)

561. A pair of late 19th century Japanese Imari porcelain bowls, 12cm diameter x 6.5cm high, on later carved and pierced wood stands; together with two late 19th/early 20th century Japanese Imari porcelain bowls and covers, 12cm diameter x 6cm high. £50-100 (+26.4% BP*)



Lot 561



Lot 562

562. A 19th century Japanese Imari porcelain charger, the interior decorated with circular roundel enclosing peony and chrysanthemum spray within a blue ground panelled border of peony and butterflies, 37cm diameter. £50-100 (+26.4% BP*)

563. A Japanese Imari porcelain charger, late 19th/early 20th century, decorated with central roundel enclosing a basket issuing flowers and foliage within a panelled border, 30.5cm diameter. £50-100 (+26.4% BP*)

564. Three Japanese Imari porcelain plates, late 19th/early 20th century, of lobed form decorated with central roundel enclosing four stylised lotus flowers within a panelled border, 22cm diameter. £50-100 (+26.4% BP*)

565. Two Japanese Imari porcelain bowls of graduated size, late 19th/early 20th century, decorated with peony and shishi dogs on a diaper ground, the largest 21.5cm diameter x 9cm high, the smaller 18.5cm diameter x 8cm high. £50-100 (+26.4% BP*)

566. A Japanese Imari porcelain bowl of slightly hexagonal-shaped form, late 19th/early 20th century, decorated with hexagonal shaped roundel to the centre within a panelled border of figures walking on a bridge divided by red ground panels of flowers, foliage, and roundel containing a flaming pearl, 31cm diameter. **£70-150** (+26.4% BP*)



Lot 567

567. An antique Japanese Kakiemon fluted oval dish, decorated with rockwork issuing blossom tree to one side and rockwork issuing pomegranate tree to the other, 23cm wide. **£80-120** (+26.4% BP*)



Lot 568

568. A pair of antique Japanese Kakiemon chrysanthemum shaped bowls, the interiors decorated with phoenix and scattered foliate sprays, 12cm diameter x 5cm high. **£80-120** (+26.4% BP*)



Lot 569

569. An antique Japanese Kakiemon flower shaped dish, with asymmetric decoration of rock work, quail, long tailed bird and blossom, 15.5cm diameter. **£80-120** (+26.4% BP*)

570. A Japanese Imari porcelain vase, late 19th/early 20th century, of lobed tapered form decorated in relief with two dragons the details picked out in green on a ground of flowers and foliage and two fan shaped panels each enclosing long-tailed birds, 47cm high. **£80-120** (+26.4% BP*)



Lot 571

571. A Japanese Imari porcelain jar, Edo Period, decorated with two shaped panels enclosing fenced garden of peony and fenced garden of blossom, 29.5cm high. **£80-120** (+26.4% BP*)



Lot 572

572. A 19th century Japanese Imari porcelain jar, decorated with panels of shishi and chrysanthemum, 40cm high. **£100-200** (+26.4% BP*)

573. A group of three Japanese porcelain figures, late 19th century, to include Bijin holding a fan, 25cm; male figure with left arm raised, 26.5cm; and girl with orange and white robe, 17cm. £100-200 (+26.4% BP*)

574. A pair of Japanese Satsuma pottery bottle vases on stands, late 19th/early 20th century, the vases decorated with panels of figures on a diaper ground the neck with butterfly form terminals, resting on corresponding circular stands each with four mask and claw feet, overall 58.5cm high. £100-200 (+26.4% BP*)

575. A Japanese Imari porcelain charger, late 19th/early 20th century, decorated with central roundel enclosing long-tailed bird and wisteria within a panelled border of lying dogs, rock work, and flowers divided by lozenge shaped panels of chrysanthemum, 46cm diameter. £100-200 (+26.4% BP*)



Lot 576

576. A Japanese Satsuma pottery teapot and cover in the form of a cockerel, Meiji period, naturalistically modelled with red, green, and blue enamel decoration and richly gilded details signed, 14.5cm high x 18cm wide. £150-300 (+26.4% BP*)

577. A large Japanese Satsuma pottery vase, Meiji period, decorated with Lohan figures within richly gilded borders, signed, 61cm high. £250-400 (+26.4% BP*)

578. A pair of Japanese Ao Kutani porcelain vases, late 19th/early 20th century, each decorated with panels of pavilions within a river landscape and panels of long-tailed birds in a garden of flowers on a red ground decorated with scrolls and diaper motifs within stylised borders, the necks with butterfly-shaped terminals, 39cm high. £250-400 (+26.4% BP*)



Lot 577



Lot 578

JAPANESE WORKS OF ART



Lot 579

579. A Japanese red lacquer rectangular shaped storage box and cover, late 19th/early 20th century, decorated with three stylised mons, 9cm high x 27cm wide x 36.5cm long. £40-80 (+26.4% BP*)



Lot 581

581. A Japanese bronze temple gong, with hammered detail and incised character mark on the outer rim, resting on a wooden stand, together with a wooden beater, overall 38.5cm high x 30cm diameter. £80-120 (+26.4% BP*)



Lot 580

580. A Japanese bronze temple gong, with horizontal details resting on a small cushion and gilded wood two sectional stand, overall 23cm high x 21cm diameter. £40-80 (+26.4% BP*)



Lot 582

582. A 19th century Japanese lacquered casket and detachable cover, decorated with gilded peony on a black ground with foliate scroll decorated copper mounts, 8.5cm high x 14.5cm wide x 10cm deep. £80-120 (+26.4% BP*)

583. A Japanese silkwork picture, late 19th/early 20th century, worked in ochre, green and gold threads to depict pavilions with farmworkers, pine trees and mountains, 130cm x 56cm, framed and glazed 145cm x 70cm. £100-200 (+26.4% BP*)



Lot 584

584. A Japanese bronze model of an elephant, Meiji Period, signed, on carved wood plinth, overall 20cm high x 28cm long. £100-200 (+26.4% BP*)



Lot 585

585. A Japanese bronze jardiniere, late 19th/early 20th century, of tapered lobed form decorated in relief with birds in flight and branches of flowers, 28.5cm high x 31cm diameter. £150-300 (+26.4% BP*)



Lot 586

586. A pair of Japanese bronze vases, late 19th century, both decorated in relief the details picked out in gilt and colour, one with fruiting branch of finger citrus, the other fruiting branch of pomegranate, 21cm high. £500-800 (+26.4% BP*)



Lot 587

587. A late 19th century Japanese lacquer Kodansu, decorated with rockwork, peony and shishi, the sides with gilt metal carry handles, the cupboard opening to a fitted interior with arrangement of seven assorted drawers, 42cm wide x 37.5cm high x 27cm deep. £500-800 (+26.4% BP*)

OTHER ASIAN WORKS OF ART



Lot 589



Lot 590



Lot 591



Lot 588

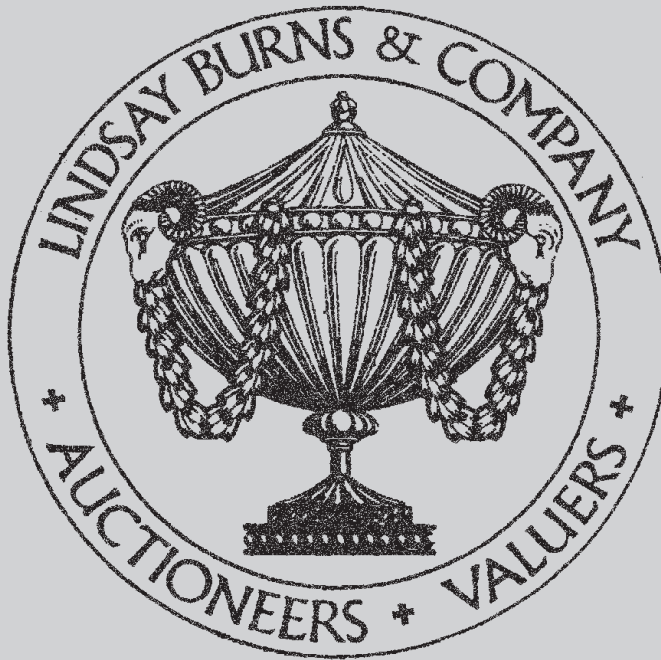
588. A South East Asian blue and white porcelain vase, decorated with flowers and foliage, with kintsugi repair, 29.5cm high. £50-100 (+26.4% BP*)

589. A bronze figure of the female deity Khmer, 20th century, on a rectangular carved wood plinth, overall 51cm high. £100-200 (+26.4% BP*)

590. A Thai parcel gilt bronze figure of the Hindu god Rama as an archer, 67cm high. £100-200 (+26.4% BP*)

591. An antique gilt metal Burmese figure of seated Buddha, on three tier graduated plinth, 65cm high, together with a graduated seven tier circular canopy, approximately 45cm high. £500-800 (+26.4% BP*)

END OF SALE



We are currently inviting suitable entries for our forthcoming Antiques and Fine Art Sale to be held in Winter 2024. The sale will include Furniture, Longcase Clocks, Rugs, Works of Art, Clocks, Prints, Watercolours, Oil Paintings, Silver & Jewellery, Asian Art, European Ceramics & Glass.

If you would like to discuss selling in this sale or for more information please contact Nick Burns.

nick.burns@lindsayburns.co.uk





Lindsay Burns & Company

Auctioneers and Valuers



6 King Street Perth PH2 8JA

Telephone: 01738 633888

Email: mail@lindsayburns.co.uk Website: www.lindsayburns.co.uk

Absentee Bid Form

Sale Title	<input type="text"/>	Sale Date	<input type="text"/>
Billing Name	<input type="text"/>		
Address	<input type="text"/>	Tel (primary)	<input type="text"/>
Town/City	<input type="text"/>	Tel (secondary)	<input type="text"/>
Postcode	<input type="text"/>	<input type="text"/>	
Email	<input type="text"/>		

Lindsay Burns & Company would like to contact you by email for the purposes noted below. If you consent to this, please tick the relevant box(es) below. You can find out about your rights and how we use your information in our privacy policy. In particular, you can withdraw your consent or unsubscribe at any time by clicking the link in our email or contacting us at mail@lindsayburns.co.uk:

☐

Auction dates

☐

Deadlines for accepting goods for auctions

☐

Newsletters

I authorise Lindsay Burns & Company to bid on my behalf up to the maximum prices as indicated, not including Buyer's Premium. I agree that I am bound by the 'Terms & Conditions of Sale' of Lindsay Burns & Company.

Signed

Date

Lot No	Brief Description	Covering Bid (£)

Conditions of Absentee Bidding

Lindsay Burns & Company execute Absentee Bids as a courtesy service to clients. Whilst every care is taken in processing and executing Absentee Bids, Lindsay Burns & Company, their employees and appointed agents accept no liability in respect of errors made in the processing and/or execution of Absentee Bids or failure to execute any Absentee Bid.

All successful bids are subject to a 22% Buyers' Premium plus VAT on the hammer price of each lot.

Buyers intending to clear purchases without delay are advised to make arrangements for payment before the sale, giving satisfactory bank or other references. Failure to do so may mean collection will be delayed until cheques have cleared.

Please ensure that the Absentee Bid Form is returned to Lindsay Burns & Company offices no later than 9:30am on the date of the relevant sale.

In the event that two identical commission bids are received, the bid that was received first will prevail.

Your attention is drawn to the terms and conditions of business of Lindsay Burns & Company.

Lindsay Burns & Company will collect, use and store your personal data in accordance with their privacy policy. A copy of this can be provided on request or accessed at <https://lindsayburns.co.uk/privacy-policy>.

©2024 Lindsay Burns & Company All rights reserved



Lot 299



Lindsay Burns & Company 6 King Street Perth PH2 8JA
Telephone: 01738 633888
mail@lindsayburns.co.uk www.lindsayburns.co.uk